



## Architect

### **Architectural design program**

that gives you the  
freedom to design the way  
you want with the tools  
and technology you need.

**VectorWorks 2008**



## VectorWorks Architect

### Seven Benefits of VectorWorks Architect

- 1 Comprehensive to Cover Your Needs
- 2 Works the Way You Think
- 3 Flexible to Fit Your Workflow
- 4 Plays Well with Others
- 5 Customer-focused for Your Success
- 6 Cost-effective for Your Practice
- 7 Proven Worldwide

*In our opinion, freedom and flexibility aren't just nice ideas. They are rights. Design the way you want to, with technology that automates routine tasks and anticipates your moves, but keeps you in total control. We've designed VectorWorks Architect to maximize your efficiency and offer design flexibility, so you don't need to focus on the logistics of doing the work. You're free to focus on the work itself.*

#### 1 Comprehensive to Cover Your Needs

Use one program for everything. From conception to completion, VectorWorks Architect features state-of-the-art technology that sets you above the competition. Dream it, design it, dimension it, detail it, and deliver a powerful presentation. VectorWorks Architect can do it all.

VectorWorks Architect boasts a comprehensive set of design tools to support your entire practice. You have complete functionality for:

#### Powerful Conceptualization

Find your muse by importing hand sketches, pictures of the site, or even a SketchUp® model. Invoke ideas in 2D, explore them in 3D with free-form shapes, and refine them with intelligent building objects. Simultaneously, analyze your program for light/shadows, areas, volumes, counts, and other data to help you make smarter design decisions early in the process. Win the job, then invest the time in building the building.

#### Innovative Building Information Modeling (BIM)

Adopt BIM without having to "re-invent" your firm. VectorWorks' approach to BIM lets you improve your design process instead of trying to replace it. With BIM, you can work faster while reducing drawing errors. Cutting-edge capabilities link plans, elevations, sections, perspectives, reports, and even rendered views, so a change to one updates the others. Query the model for information at any time, and using the Industry Foundation Classes standard (IFC), move your BIM models to a growing selection of validation, analysis, and construction programs. For more, check out [www.vectorworks.net/BIM](http://www.vectorworks.net/BIM)

#### Professional Documentation

Produce high quality construction documents with ease. VectorWorks offers precision 2D drafting tools, intelligent objects for building, detailing, MEP, furniture, millwork, annotations, and thousands of free symbols from leading building product companies. A centralized database enables you to store, manage, and recall notes. VectorWorks Issue Manager keeps track of what, when, and to whom files were issued, and it automatically dates your title blocks. Batch print drawing sets or export them as multi-page PDFs at full or reduced sizes.

#### Automatic Reporting and Analysis

Stop counting items in your drawings. Automatic data tracking does the tedious work for you. The program goes further than automated schedules and materials takeoffs. It provides a user-defined way to assign custom data to any object and create unique reports that predict project performance. A framing module effortlessly creates framing models, plans, and panel elevations, as well as framing takeoffs for floors, walls, and roofs.

#### Unique Presentations

Define your signature look with advanced, high-end graphics design technology and large libraries of entourage. Your style is not limited by "cookie-cutter" looks. Choose from unlimited palettes of colors. Add gradients, image fills, stipples, and hatching. Easily import digital images and graphics. Use our exclusive sketch rendering technology to change hard-lined drawings into soft, hand-sketched illustrations. Unique page layout capabilities make it simple to arrange presentation boards.

Plug in RenderWorks to create photorealistic renderings or choose an artistic rendering option to make your scenes look hand drawn. RenderWorks is seamlessly integrated—you won't spend time importing and exporting the model as the design changes.

**"VectorWorks has been my design tool for nearly 20 years. As a designer, I need a program that allows me to work from very small to large-scale projects quickly, elegantly, and accurately. And, VectorWorks allows me to do that. I've come across other programs, of course, but VectorWorks is just like working with a trusted old friend."**

Mike Eleftheriades, architect  
Media Synthesis, Ltd.  
London, England

"What we like best about VectorWorks is its extreme ease of use, which has a positive impact on our productivity and has helped make our firm profitable. Anyone can come into our office, whether it's a new hire or someone with 20 years of drafting in a different program, and we can get them up and running in a week."

John Woodworth  
Stiekney Murphy Romine  
Architects  
Seattle, WA



courtesy of Design Visions, Inc.



courtesy of Resolution: 4 Architecture;  
image courtesy of Wes Milholder

## 2 Works the Way You Think

### Easy-to-use Interface

Do what you like to do best—design. You won't waste time getting up to speed because VectorWorks Architect's simple, customizable interface and WYSIWYG display make it easier to learn and use than standard CAD programs.

### Intuitive Drafting Tools

Make the leap from the board to the computer without any trouble. VectorWorks SmartCursor™ technology replaces manual drafting tools, so inexperienced CAD users can make the switch easily.

### Tailored for Your Success

Work in tandem with the program. VectorWorks Architect is designed to think the way you think. In addition to designing with lines, arcs, and circles, you can design with walls, doors, and windows. The building objects are easy to edit and automatically display in both 2D and 3D views; so, creating 3D models of your 2D drawings is automatic.

## 3 Flexible to Fit Your Workflow

With VectorWorks Architect you're not limited to a certain workflow, so you have the freedom to work the way you want to work. Incorporate your existing approach to design to make the best use of the skills you already have in-house.

- Use a quick sketch or a simple diagram when that's all you need.
- Put together winning 2D/3D presentations when you're still competing for the job and don't have the time or budget to make the investment in a detailed BIM approach.
- Turn your project team loose with VectorWorks' outstanding production tools when they "just want to draft it."
- Without turning the firm upside down, incorporate BIM technology when the client and project demand BIM.

### Freeform Modeling

Blend, twist, sculpt, and deform. Punch holes. Duplicate and array. A suite of solids and NURBS surface modeling tools allows you to create any shape and easily explore organic geometry.

### Going Beyond the Building

Make the entire design shine. Often architecture is more than just the building. With VectorWorks Architect you can design anything—graphics, interior details, hardware, furniture, fittings, or whatever you can imagine—without having to learn or use additional programs.



courtesy of rolf+hotz architekten

"VectorWorks is very simple and intuitive. We have not found another program that approaches its combination of features and ease of use."

Greg Kiss, principal  
Kiss + Cathcart  
New York, NY

**4** Plays Well with Others

VectorWorks Architect can work with other programs used by you or your colleagues. So there's nothing lost in the translation.



courtesy of Nathan Kipnis Architects, Inc.;  
image courtesy of ©2006 Wayne Cable.com

**Efficient Workgroup Capabilities**

Break up complex projects. Whether you're a sole practitioner subbing out work or a large firm dividing work among different members of the team, VectorWorks' workgroup referencing provides a flexible way to split even the most complicated project into manageable pieces.

**Easy Translations**

Ride the leading edge of digital practice, and move your BIM models fluidly between design, analysis, and construction packages with VectorWorks' IFC 2X3 translator. Read and write AutoCAD® 2007/2008 files with our DWG translator. Send out drawing sets as non-editable, multi-page PDFs.

**Google Friendly**

Import concept models from SketchUp and access thousands of models from Google's 3D Warehouse. Export 3D models to Google Earth®.

**Endless Digital Images**

Make your work even more compelling and easier to understand with digital imagery. Import scans, digital photos, or web images. Import or export a wide array of image files, including Illustrator® EPSF and native Photoshop® PSD files. Also, export your design for inclusion into your firm's marketing materials or website.

**Cutting Edge 3D**

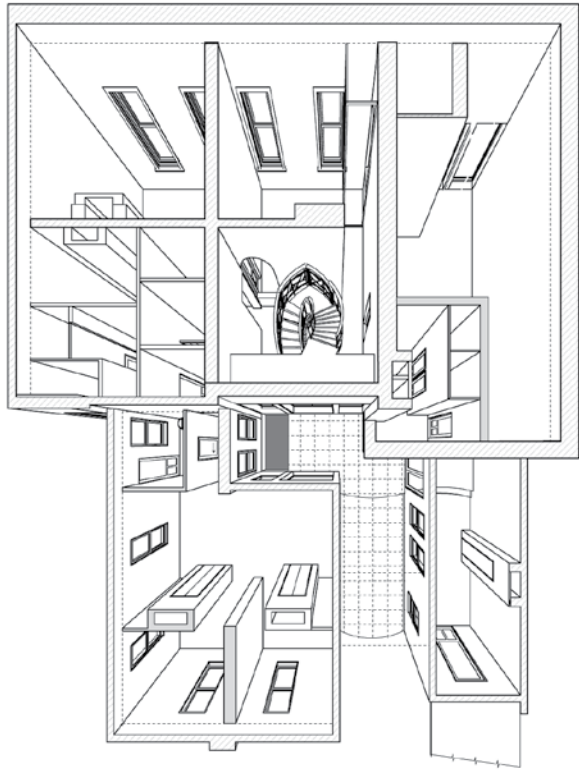
See it in 3D. Send models to 3D CAM machines and 3D printers, or access third-party model content. VectorWorks supports a number of standard 3D file formats, including IGES, SAT, and .3DS



courtesy of Nathan Kipnis Architects, Inc.;  
image courtesy of ©2006 Wayne Cable.com

"One of the fantastic things about VectorWorks is that I don't have to go into other programs to get my intended results. Not only is it time-consuming; it's also costly to purchase additional software. I don't have to design in one program then jump through hoops to get what I need. I don't need a CAD program, plus a rendering program, plus a modeling program."

Jim Rounsevell, principal  
Studio 109 PLC  
Charlottesville, VA



courtesy of Degen & Degen

**5** Customer-focused  
for Your Success

Relax. We're here for you every step of the way. Your relationship with us doesn't end when you download the software. That's just the beginning. We provide many channels for you to get the information you need. If you'd like training, take advantage of our multiple offerings: onsite,

online, or in the classroom. If a technical issue stumps you, contact our technical support team for help. You can also tap into our VectorWorks community with over 400,000 enthusiastic users worldwide and user groups on the local level. E-mail listservs provide assistance around the clock, or you can use a service directory and job board to find help.

VectorWorks users often find themselves in Internet-based dialogues with our engineers and managers. We take pride in cultivating lasting relationships with our users, and we translate their feedback into positive product developments. With your input, we can continue to develop software that exceeds your expectations. After all, your success is our success.

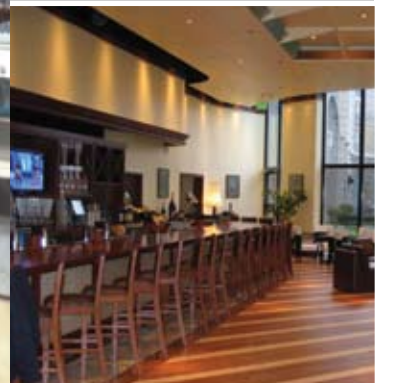
**6** Cost-effective  
for Your Practice

You won't find another professional design program that packs so much into such a small price. In one package, you get state-of-the-art tools and technology and the ability to work from conception to completion. You also get free software updates and affordable upgrades. With free technical support and affordable training options, you get value far beyond your initial savings. We never force subscriptions, so you're free to upgrade when and how you choose. As your business grows, we add extra seats at a discounted price. We offer a lot of great value and no hidden fees.



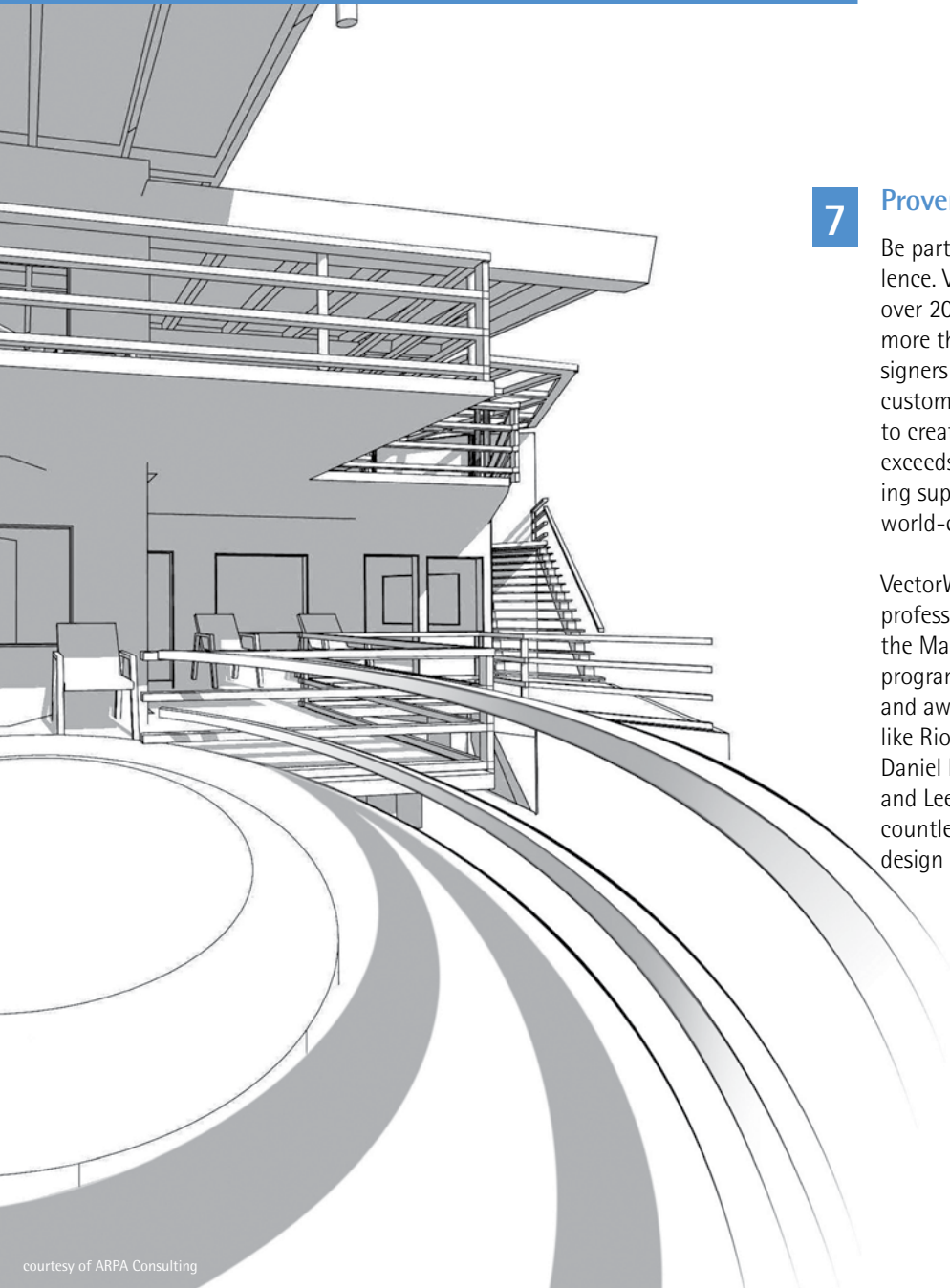
"We find VectorWorks Architect to be the most complete software package. Drafting tools allow us to draw accurate 2D drawings. NURBS surface and solid modeling tools allow us to create 3D models. Thanks to viewports, it's possible to lay out entire projects. Complete DWG/DXF support helps us communicate with outside consultants."

Alfonso Femia  
5+1 architetti associati  
Genoa, Italy



courtesy of Guy Rollins

courtesy of Steven D. Pults, A.I.A., & Associates



**7 Proven Worldwide**

Be part of a long tradition of excellence. VectorWorks was founded over 20 years ago, and now counts more than 400,000 professional designers worldwide. We listen to our customers and use their feedback to create a product that continually exceeds their expectations, delivering superior design flexibility and world-class graphics.

VectorWorks is the best-selling professional CAD software for the Macintosh and the preferred program for world-renowned and award-winning architects like Rios Clementi Hale Studios, Daniel Libeskind, tec Architecture, and Leers Weinzapfel, as well as countless others who move the design world forward every day.

VectorWorks is produced by Nemetschek North America, a wholly-owned subsidiary of Nemetschek AG, which is the world's leading IT company for the design, construction, and management of buildings and

real estate. Nemetschek software solutions are used by design professionals in 142 countries and eight languages.

With VectorWorks Architect 2008, the tradition continues.



courtesy of Radu Architects



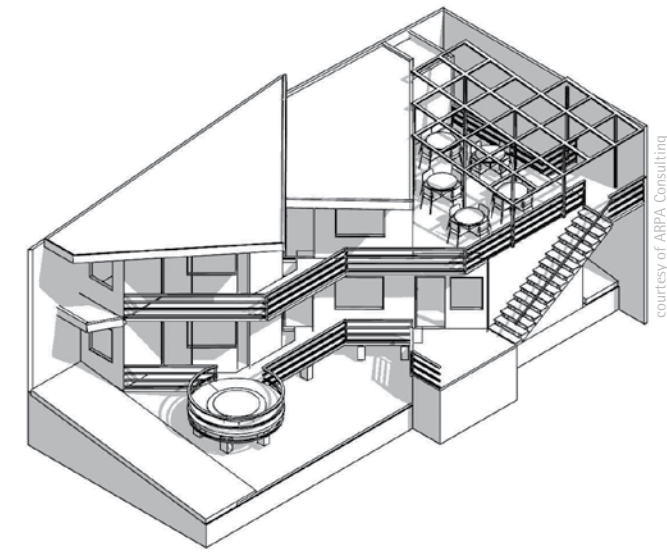
courtesy of Designarc  
courtesy of Benny Chan Fotoworks

**"We appreciate VectorWorks' 'all-in-one' ability to serve as our primary design tool and as our primary production tool."**

Peter Pelsinski, partner  
SPaN-Stonely Pelsinski  
architects Neukomm  
New York, NY



courtesy of RMC Architects



courtesy of ARPA Consulting

# Architect

Get everything **YOU NEED** in one place.  
Work the way **YOU WANT**.  
**YOU CREATE** designs that set you apart.

**VectorWorks Architect**  
Designing the Future

cover image courtesy of Tee Architecture;  
image courtesy of Hisao Suzuki



Nemetschek N.A. Inc.  
7150 Riverwood Drive  
Columbia, MD 21046

T 888-646-4223  
T 410-290-5114  
F 410-290-8050

[www.nemetschek.net](http://www.nemetschek.net)