



Landmark

A landscape design program that gives you the freedom to design the way you want with the tools and technology you desire.

VectorWorks 2008

VectorWorks Landmark

Seven Benefits of VectorWorks Landmark

- 1 Works the Way You Think
- 2 Flexible to Fit Your Workflow
- 3 Comprehensive to Cover Your Needs
- 4 Superior in Presentations
- 5 Plays Well with Others
- 6 Customer-focused for Your Success
- 7 Cost-effective for Your Practice

Where is it written that landscape design software has to be expensive and difficult to use? Certainly not at VectorWorks. We've designed VectorWorks Landmark with our users' input, so it's reasonably priced and easy to use—not to mention sophisticated. It features a short learning curve, advanced 2D and 3D site design capabilities, automatic schedules and reports, a vast plant database, a suite of building tools, free landscape and site symbol libraries, AutoCAD® compatibility, and support for GIS files. It's a comprehensive package that lets you document and present your designs with efficiency and elegance. We'll put that in writing.



courtesy of Miles Barnard, South Fork Studio Landscape Architecture

1 Works the Way You Think

VectorWorks Landmark is intuitive. The program was created to mirror the way landscape designers work, so you don't need to focus on the logistics of doing the work. You're free to focus on the work itself.

Easy-to-use Interface

Do what you like to do best—design. You won't waste time getting up to speed because VectorWorks Landmark's simple, customizable interface and WYSIWYG display make it easier to learn and use than standard CAD programs.

Intuitive Drafting Tools

Make the leap from the board to the computer without any trouble. VectorWorks SmartCursor™ technology replaces manual drafting tools, so inexperienced CAD users can make the switch easily.

Tailored for Your Success

Work in tandem with the program. VectorWorks Landmark is especially ready to meet the needs of designers, landscape architects, and planners. In addition to designing with lines, arcs, and circles, you can design with plants, hardscapes, and walls just like you would in the real world. Landmark's intelligent objects are easy to edit. If you need to change a plant's spacing or the height of a retaining wall, just type in the changes instead of redrawing them. Plus, intelligent objects display correctly in both 2D and 3D views. So, creating 3D models from your 2D drawings is a piece of cake.



courtesy of Jeziorowski/Tolbinski, France

2 Flexible to Fit Your Workflow

Work on any size project or in 2D or 3D. Design whatever you can dream up. With VectorWorks Landmark, you're not limited by the software. The possibilities are wide open.

Range of Projects

Work on any type of project with a flexible design environment. Design residential plans at 1/4-inch scale up to urban plans at 1:1,000 or larger. VectorWorks' elegant design tools easily scale up or down to accommodate your work.

Graceful 2D Designing

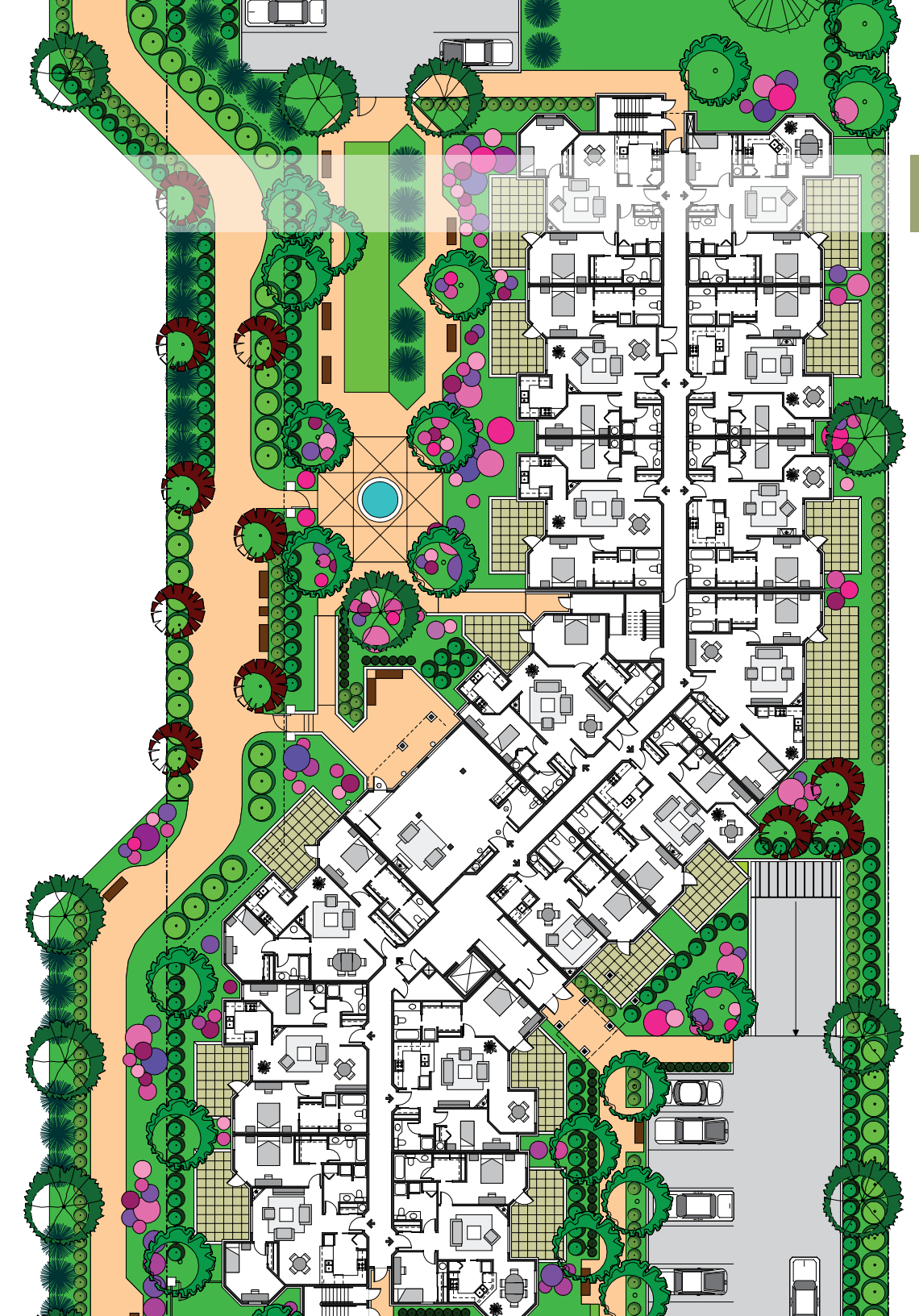
Sketch out concepts, create illustrative master plans, and work up precision construction drawings. VectorWorks' sophisticated 2D drafting tools and unique 2D presentation capabilities make it easy.

Powerful 3D Modeling

Take your designs to the next level with intelligent objects that display correctly in plan and 3D views, flexible free-form modeling tools, and 3D Digital Terrain Modeling (DTM) capabilities. Create stunning 3D renderings and even animated flyover and walk-through movies.

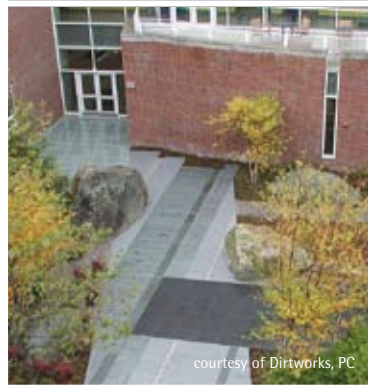
Limitless Designs

Bring your ideas to life. VectorWorks Landmark goes beyond planting plans. You can design anything—graphics, ornamentation, hardware, furniture, decking, urban master plans, or whatever you can imagine—without having to learn or use additional programs.



"I prefer VectorWorks Landmark over AutoCAD, because VectorWorks is much more intuitive. The tools are so much easier to find and use, yet all the capability is still there."

David Kamp, ASLA, LF
Dirtworks, PC
New York, NY



courtesy of Dirtworks, PC



3 Comprehensive to Cover Your Needs

Use one program for everything. From conception to completion, VectorWorks Landmark features state-of-the-art technology that sets you above the competition. Dream it, design it, dimension it, detail it, and deliver a powerful presentation. VectorWorks Landmark can do it all.

VectorWorks Landmark boasts a comprehensive set of design tools to support your entire practice. You'll have complete functionality for:

Streamlined Site Documenting

Start on the right foot. This is where it all begins and no one does it better. Cleanly import CAD drawings from architects, builders, or engineers to use as base plans. Download GIS files from the city or state. Scan in planting plans or survey files and trace over them. Or, quickly enter your field measurements. Use the property line or site modeling tools to quickly define a site's boundaries and setbacks. There is even a suite of building and site objects to easily document existing structures and site conditions.

Easy Sketches and Presentations

Find your muse by importing hand sketches, pictures, or even a SketchUp® model. Quickly sketch out your design ideas and present them. Then rework and refine them with intelligent site and building objects and planting tools—all while analyzing your program for areas, volumes, counts, and other data like light and shadow studies. This way, you can make smarter design decisions early in the process.

Detailed 2D Construction Drawings

Use our suite of precision 2D drawing tools and intelligent landscaping, irrigation, site design, and urban planning objects to make it easy to quickly lay out plans, elevations, sections, and detail drawings. The exclusive Place Plant tool puts plantings at exact intervals or in groupings. Our unique Freehand tool lets you draw organic shapes for beds and water features. Our convenient Hardscape tool creates patterned

walkways and areas. A flexible Massing Model tool and suite of architectural objects creates model buildings. When you're ready, you can batch print drawing sets or export them as multi-page PDFs at full or reduced sizes.

Thousands of Free Drag and Drop Resources

Take advantage of Landmark's large, free landscape libraries. There's no need to re-draw objects when you can use pre-drawn plants, plant images, and thousands of symbols from manufacturers like Unilock® for objects like furniture, lighting, irrigation, parking, roads, cars, and paving patterns.

Automatic Reports and Lists

Stop counting items in your drawings. Automatic data tracking does the tedious work for you. The program goes further than automated plant lists and materials takeoffs. It provides a user-defined way to assign custom data to any object and use that information to calculate area takeoffs, mulch volume, edging length, and area costing.



courtesy of Dirtworks, PC

VectorWorks Landmark

4 Superior in Presentations

Define your signature look with advanced, high-end graphics design technology and large libraries of entourage. Your style is not limited by "cookie-cutter" looks. Present ideas in 2D or 3D. Choose from unlimited palettes of colors. Add gradients and image fills. Easily import digital images and graphics.

Unique Hard/Soft Rendering Switch

Use our distinctive sketch rendering and exclusive plant styling technologies to blur the line between construction and presentation. You can switch between hard-lined drawings and soft, hand-sketched illustrations in the same drawing. Unique page layout capabilities make it a cinch to arrange presentation boards.

Accurate Mapping and GIS

Integrate maps into your work with ease. Import geo-referenced aerial/satellite images and GIS data to be used as they are, or use the outstanding drawing, modeling, and graphics capability to embellish them with 2D or 3D graphics for compelling presentations.

Automatic Digital Terrain Modeling (DTM)

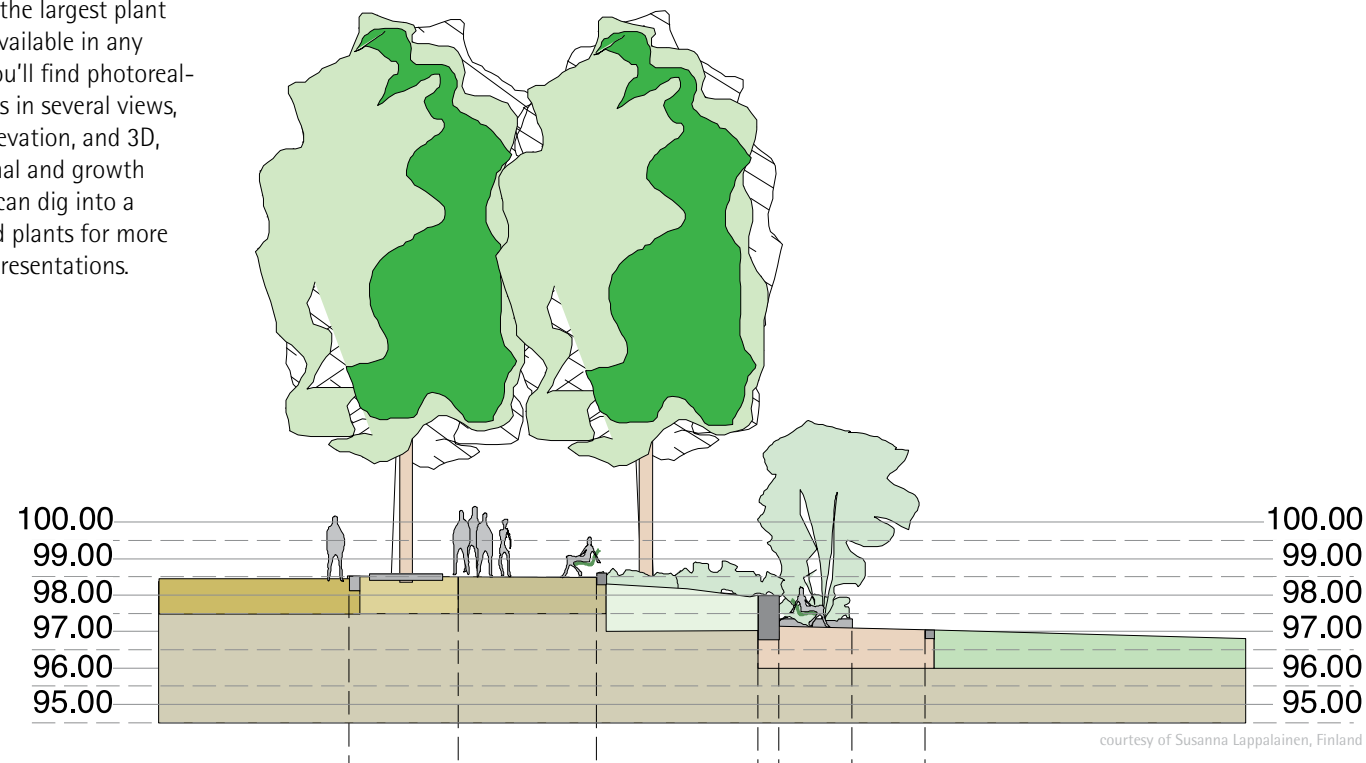
Automate grading plans, calculate cut/fill, analyze the site for slope and flow, and present the site in 3D. VectorWorks Landmark's DTM capabilities make it all possible.

Bountiful Plant Images

Flex your green thumb. We've partnered with Xfrog®, the industry's premier developer of botanical modeling technology, to provide you with one of the largest plant image libraries available in any CAD program. You'll find photorealistic plant images in several views, including top, elevation, and 3D, as well as seasonal and growth views. Plus, you can dig into a library of stylized plants for more impressionistic presentations.

RenderWorks

Plug in RenderWorks to create photorealistic 3D renderings, shadow studies, and even solar animations. Or, choose an artistic rendering option to make your scenes look hand-drawn. Because RenderWorks is seamlessly integrated, there's no need to import and export the model as the design changes. Drawings, models, and renderings all happen right here.



courtesy of Susanna Lappalainen, Finland



courtesy of PWP Landscape Architecture

5 Plays Well with Others

VectorWorks Landmark can work fluidly with your colleagues' or your other programs. So, there's nothing lost in the translation.

Efficient Workgroup Capabilities

Break up complex projects. Whether you're a sole practitioner subbing out work or a large firm dividing work among different members of the team, VectorWorks' workgroup referencing provides a flexible way to split up even the most complicated project into manageable pieces.

Easy-to-share CAD Files

Easily exchange files with builders, architects, and engineers using AutoCAD, MicroStation, or other CAD programs with support for DWG.

Google Friendly

Import concept models from SketchUp and access thousands of models from Google's 3D Warehouse. Export 3D models to Google Earth®.

Endless Digital Images

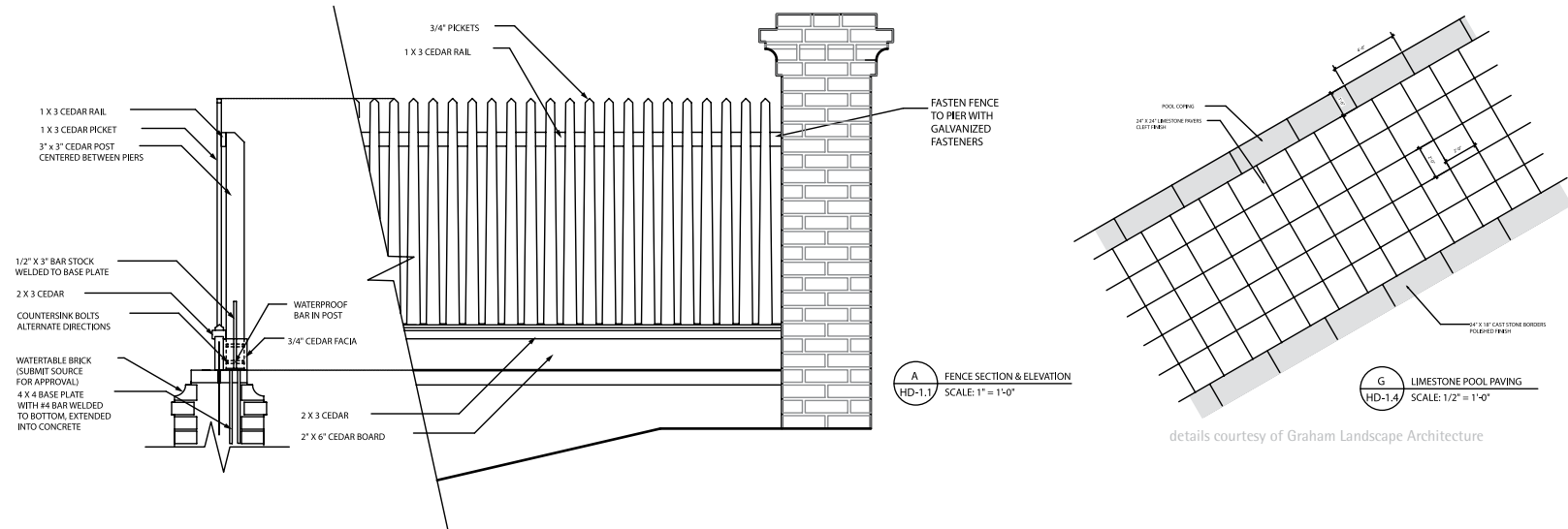
Make your work even more compelling and easier to understand with digital imagery. Import scans, digital photos, or web images. Import or export a wide array of image files, including Illustrator EPSF® and native Photoshop® PSD files. Export your design for use in your company's marketing materials and website, as well.

VectorWorks Landmark

6 Customer-focused for Your Success

Relax. We're here for you every step of the way. Your relationship with us doesn't end when you download the software. That's just the beginning. We provide many channels for you to get the information you need. If you'd like training, take advantage of our multiple offerings: onsite, online, or in the classroom. If a technical issue stumps you, contact our technical support team for help. You can also tap into our VectorWorks community with over 400,000 enthusiastic users worldwide and user groups on the local level. E-mail listservs provide assistance around the clock, or you can use a service directory and job board to find help.

VectorWorks users often find themselves in Internet-based dialogues with our engineers and managers. We take pride in cultivating lasting relationships with our users, and we translate their feedback into positive product developments. With your input, we can continue to develop software that exceeds your expectations. After all, your success is our success.



7 Cost-effective for Your Practice

Shop no further. You won't find another professional design program that packs so much into such a small price. In one package, you get state-of-the-art tools and technology and the ability to work from conception to completion. You also get free software updates and affordable upgrades. With free technical support and reasonable training costs, you get value far beyond your initial savings. We never force subscriptions, so you're free to upgrade when and how you choose. As your business grows, we add extra seats at a discounted price. For you, that means a lot of great values—and no hidden fees.

"We find VectorWorks Landmark to be a versatile CAD system that works extremely well for us. We find it easy to use and a big time saver. Yet it has a level of complexity and sophistication that enable us to create all the details we need, as well as assemble a vast amount of data from different sources."

Jay Graham, principal
Graham Landscape Architecture
Annapolis, MD



VectorWorks Landmark

Join Us

Be part of a long tradition of excellence. VectorWorks was founded over 20 years ago, and now counts more than 400,000 design professionals worldwide. We listen to our customers and use their feedback to create a product that continually exceeds their expectations, delivering superior design flexibility and world-class graphics.

VectorWorks is the best-selling professional CAD software for the Macintosh. It's also the preferred program for world-renowned landscape architects like Peter Walker of Berkeley, DirtWorks PC in New York, Andrew Fisher Tomlin in London, and countless others who move the design world forward every day.

VectorWorks is produced by Nemetschek North America, a wholly-owned subsidiary of Nemetschek AG, which is the world's leading IT company for the design, construction, and management of buildings and

real estate. Nemetschek software solutions are used by design professionals in 142 countries and eight languages.

With VectorWorks Landmark 2008, the tradition continues.



"Using VectorWorks Landmark is like getting into a well-designed car. It's an exhilarating experience driving it."

Madis Pihlak
Associate Professor
School of Architecture and
Landscape Architecture
College of Arts & Architecture
The Pennsylvania State University



Landmark

DESIGN what you dream.

Work the way you **CHOOSE**.

CREATE landscapes that set you apart.

VectorWorks Landmark

Designing the Future

cover image courtesy of Miles Barnard,
South Fork Studio Landscape Architecture



Nemetschek N.A. Inc.
7150 Riverwood Drive
Columbia, MD 21046

T 888-646-4223
T 410-290-5114
F 410-290-8050

www.nemetschek.net