



What's New

What's new in VectorWorks 2008?

More than just the name.

VectorWorks 2008

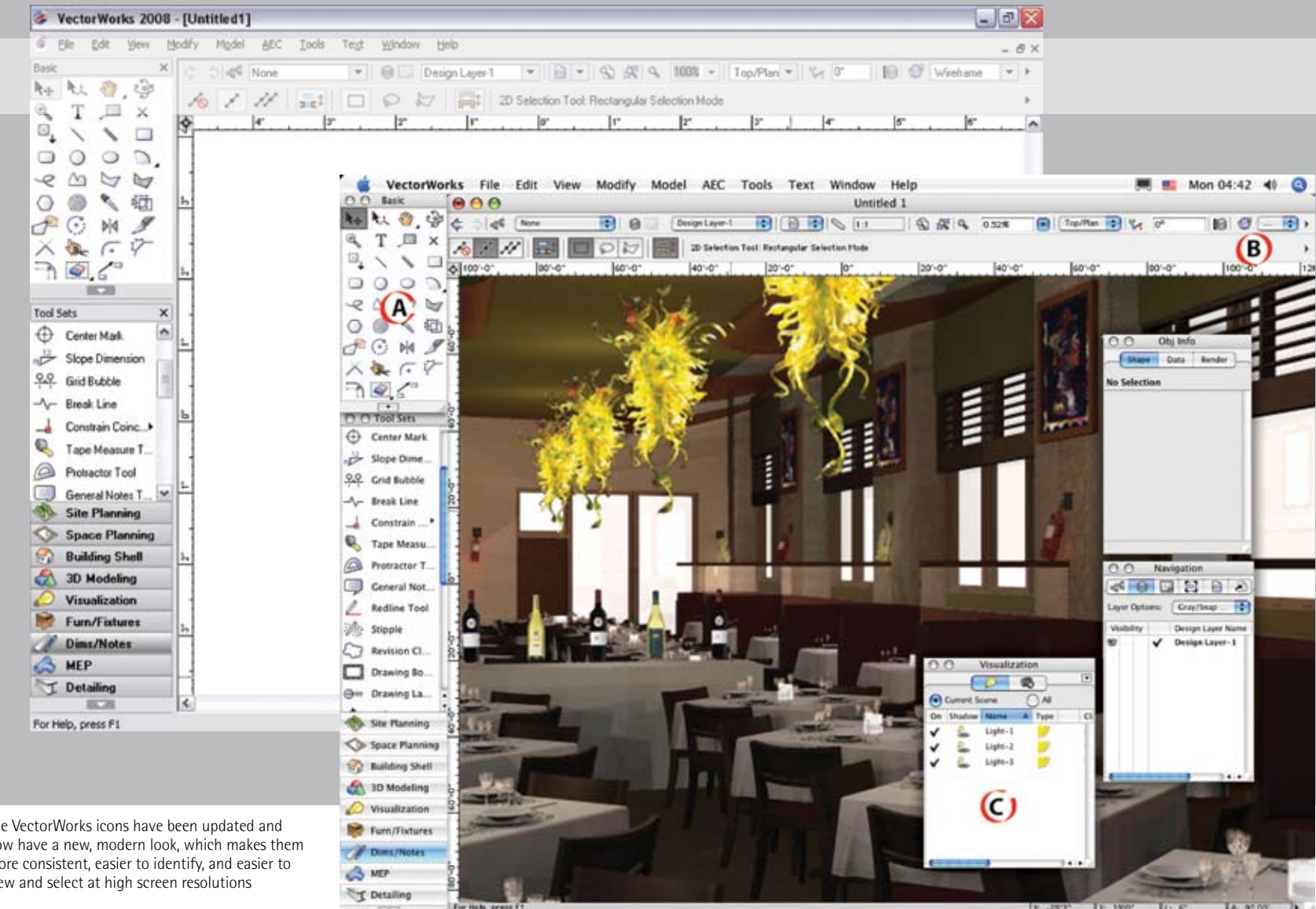
VectorWorks What's New

Seven Reasons to Look Inside

- 1 Experience High Performance Drafting & Design
- 2 Play Well With Others
- 3 Wow Them With the Presentation
- 4 Get Über Organized
- 5 Draw It Once; Use It Again
- 6 Choose From a Vast Catalog of New Content
- 7 See New Features at a Glance

What's new in VectorWorks 2008? A lot more than just the name. We listened, we learned, and now we're launching a new version of VectorWorks. Thanks to your incredible feedback, we've improved our product to make your workflow easier, your designs more compelling, and your productivity much higher. You're going to really like VectorWorks 2008. After all, you helped design it. Here are just a few things you'll be able to do with all of the new enhancements.

Nemetschek, North America is a wholly-owned subsidiary of European software giant, Nemetschek AG. A global leader in design technologies, Nemetschek N.A. has been developing CAD software for the architecture, engineering and construction, entertainment, landscape design, and manufacturing fields since 1985. VectorWorks, its award-winning flagship product, is one of the world's best-selling cross-platform CAD applications. The Nemetschek, N.A. family of software includes VectorWorks Fundamentals, Architect, Landmark, Spotlight, Designer, Machine Design, and RenderWorks.



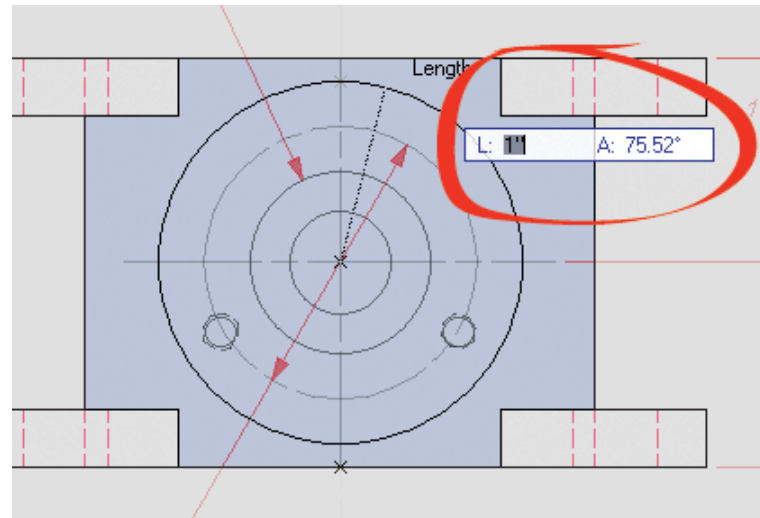
- A. The VectorWorks icons have been updated and now have a new, modern look, which makes them more consistent, easier to identify, and easier to view and select at high screen resolutions
- B. The new View bar simplifies the interface and improves usability by centralizing VectorWorks' many organization and viewing controls in one convenient location.
- C. The Visualization palette provides fast and easy access to all lights and cameras in a document. Easily modify, select, create, duplicate, and delete lights and cameras across a document from this palette.

courtesy of Nathan Kipnis Architects, Inc.

VectorWorks What's New

1 Experience High-performance Drafting and Design

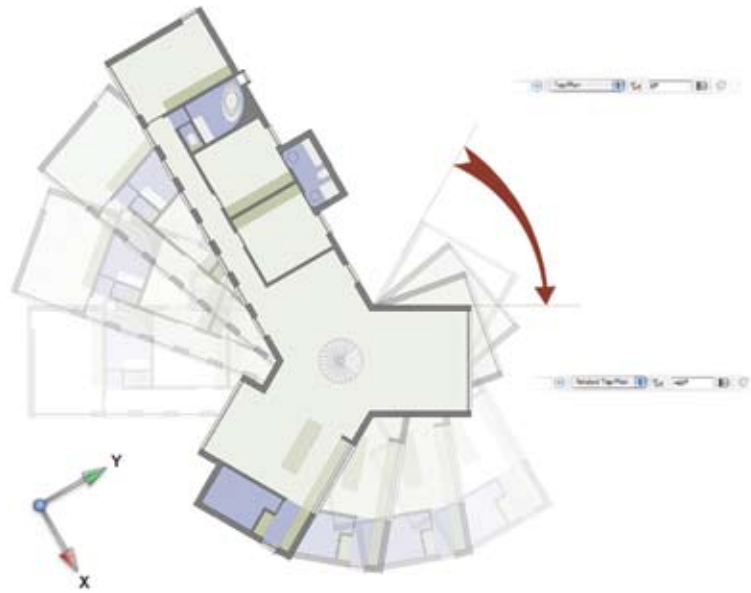
VectorWorks 2008 wraps you with exactly the controls you need—right where you need them—so you can finish your designs with little wasted effort or distraction. Our new heads-up display brings precision drawing right into your line of sight, with the ability to switch quickly between mouse and keyboard inputs. A new View bar consolidates often-used viewing and organizational controls and places them within easy reach. We've streamlined the program with fewer mouse clicks and many new batch-editing capabilities, such as the ability to select and edit multiple windows and doors in walls. In addition, the ability to rotate your plan view will give you a new angle on design.



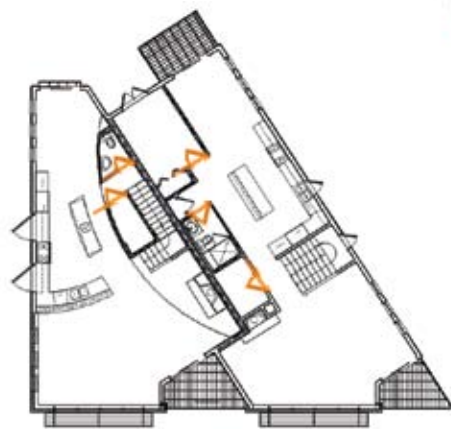
The new Heads-Up data display puts the action where the cursor is, allowing you to quickly create and edit objects to exact dimensions.



New advanced lighting device parameters now make shutter cuts possible.



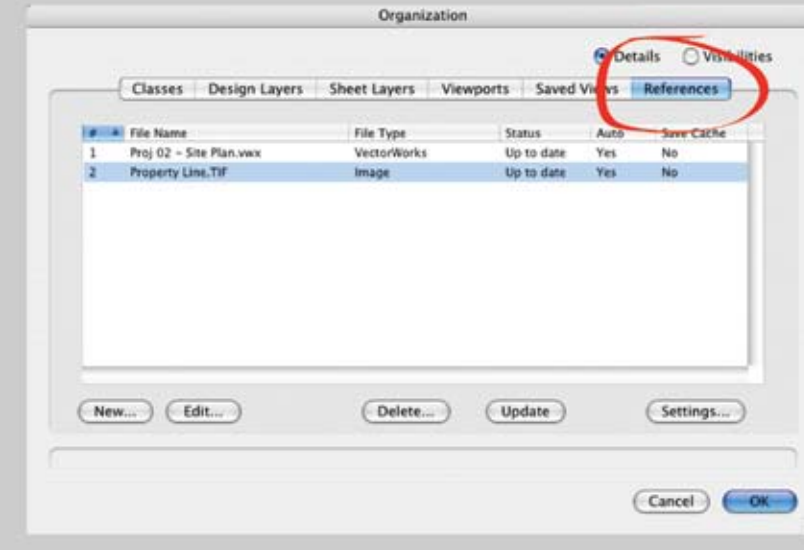
The Rotate Plan command allows you to rotate the page to make it easy to work on parts of a design that lie at odd angles, while still drawing orthogonally.



Easily reconfigure and reposition multiple objects at once, even those in walls.

Referenced File(s)

Project File



Using design layer viewports, create true references to external VectorWorks files, image files, and PDFs. With true referencing, referenced information is not imported into your documents, keeping file sizes smaller, eliminating naming conflicts, and reducing the "clutter." References can be duplicated, moved, rotated, and even cropped.

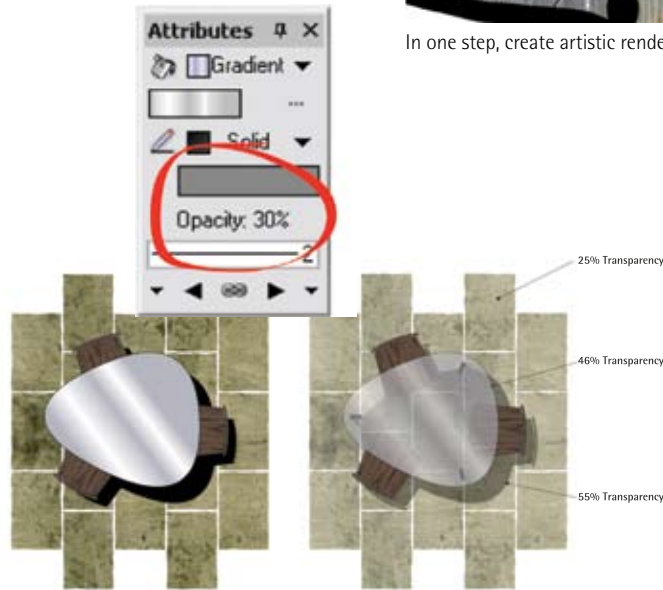
2 Plays Well with Others

As a sole practitioner subbing out work or a large firm assigning responsibilities to different team members, you understand the challenges of maintaining a smooth workflow. New workgroup capabilities make it easier to break apart and reassemble complex projects while keeping files sizes small, reducing clutter, and eliminating naming conflicts. You can directly reference PDF and image files, use new design layer viewports to reference model data for projects like tenant finish plans, or reference different buildings on a large campus plan. For those working on the leading edge of digital practice, VectorWorks' IFC 2x3 translator fluidly moves your BIM models among other design, analysis, and construction platforms. Last, but certainly not least, our DWG translator handles AutoCAD® 2007/2008 files.

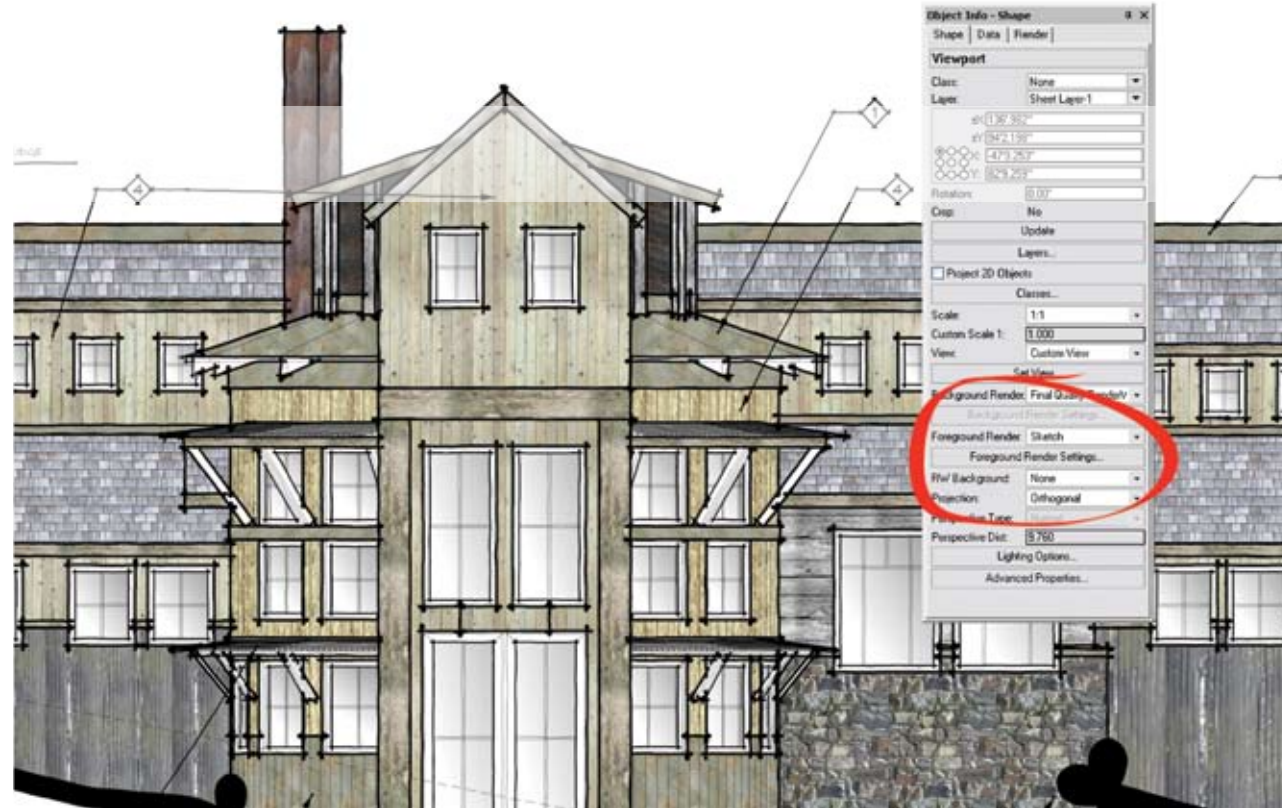
VectorWorks What's New

3 Wow Them with the Presentation

Elevate your presentations far above the competition with unlimited color choices and pre-configured color swatches from Pantone® Benjamin Moore®, Sherwin-Williams®, Resene® and more. Use object-by-object opacity control to give your drawings the professional graphics look that leading artists expect. In 3D, RenderWorks takes a big step forward with final gather rendering and new bump shaders that bring your models to life faster than ever.



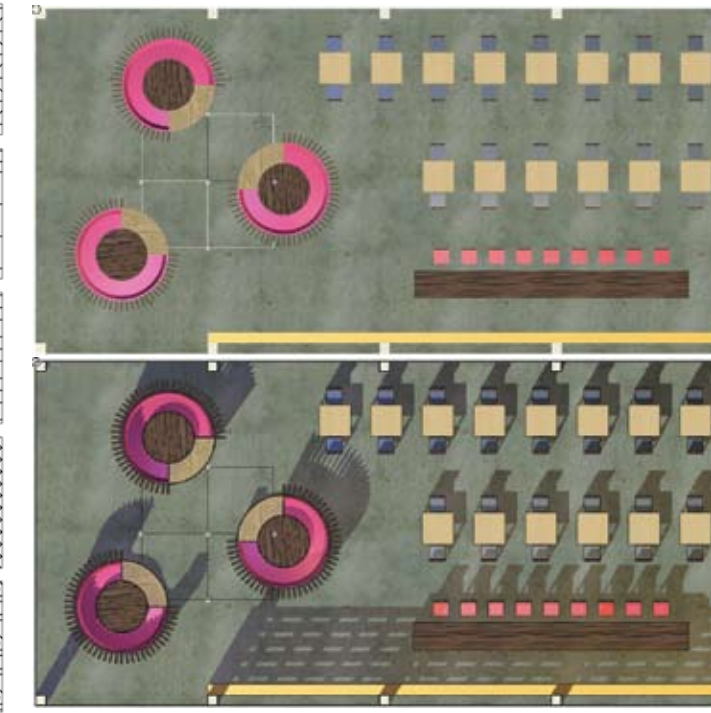
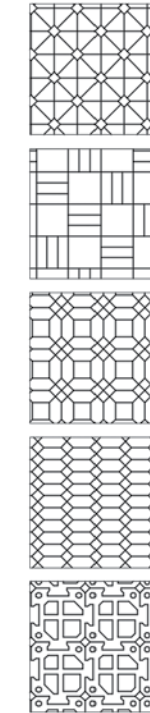
Adjust transparency of individual 2D objects using the new Object Opacity option.



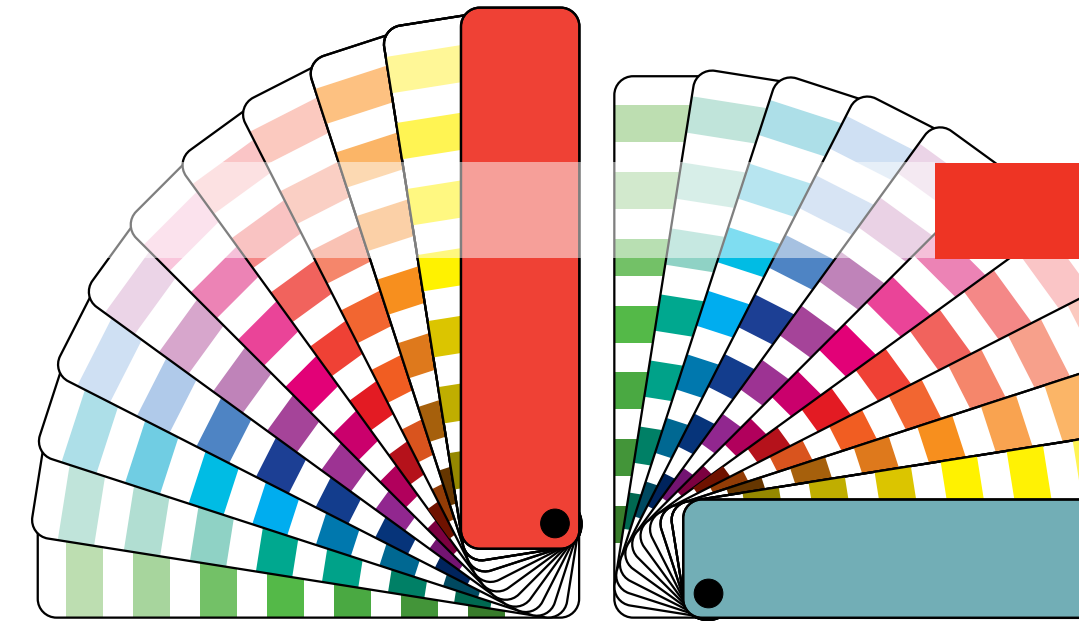
In one step, create artistic renderings by layering viewports with different rendering effects.

courtesy of Astelier Architectural Group
Delmar Cox Architect

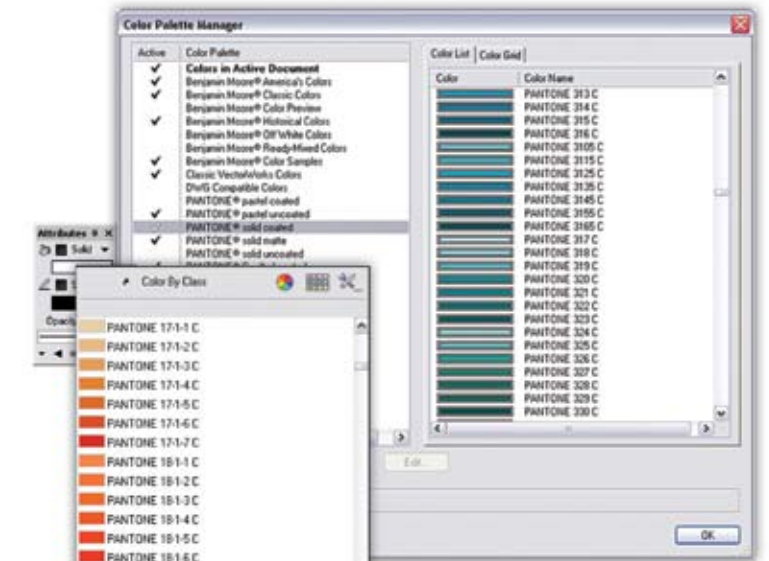
185 new paver hatch patterns match Unilock® paver patterns to enhance your designs



Cast shadows, show backgrounds, and draw the outer edges of objects in an OpenGL.



VectorWorks 2008 offers unlimited color choices including PANTONE®, Benjamin Moore®, Sherwin Williams®, Rosco®, and more.



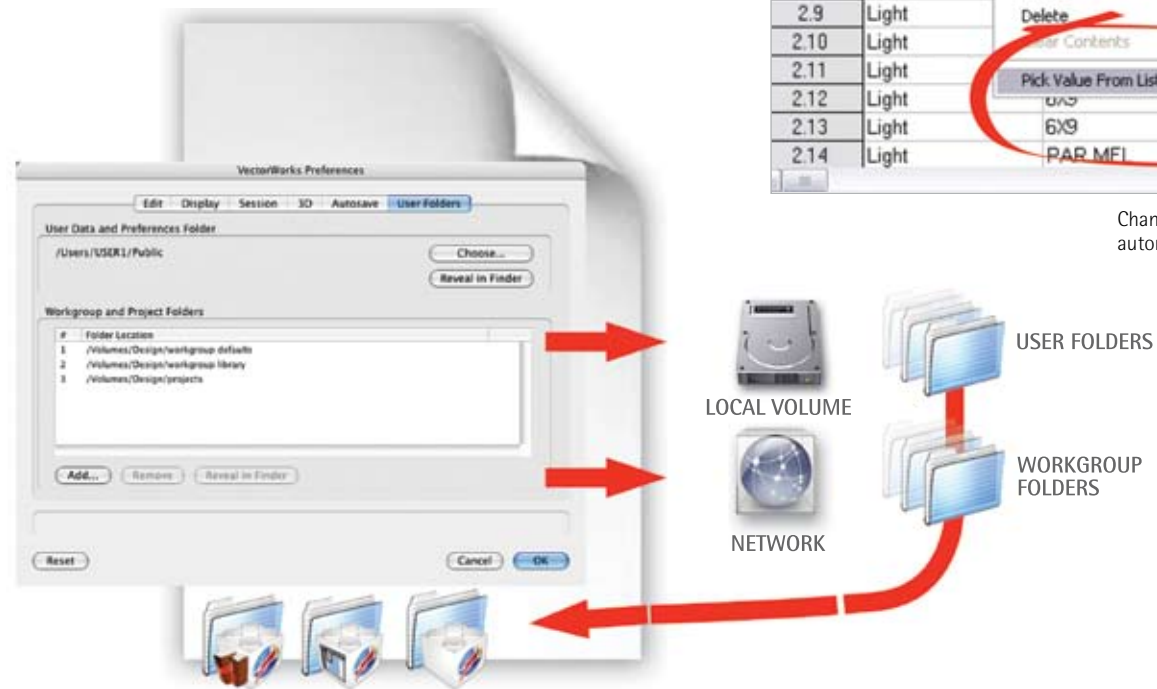
111 New high-quality wood materials from arcitex® will add another dimension to your drawings and models.

Flooring options have expanded with 44 new flooring materials in the Forbo® flooring library.

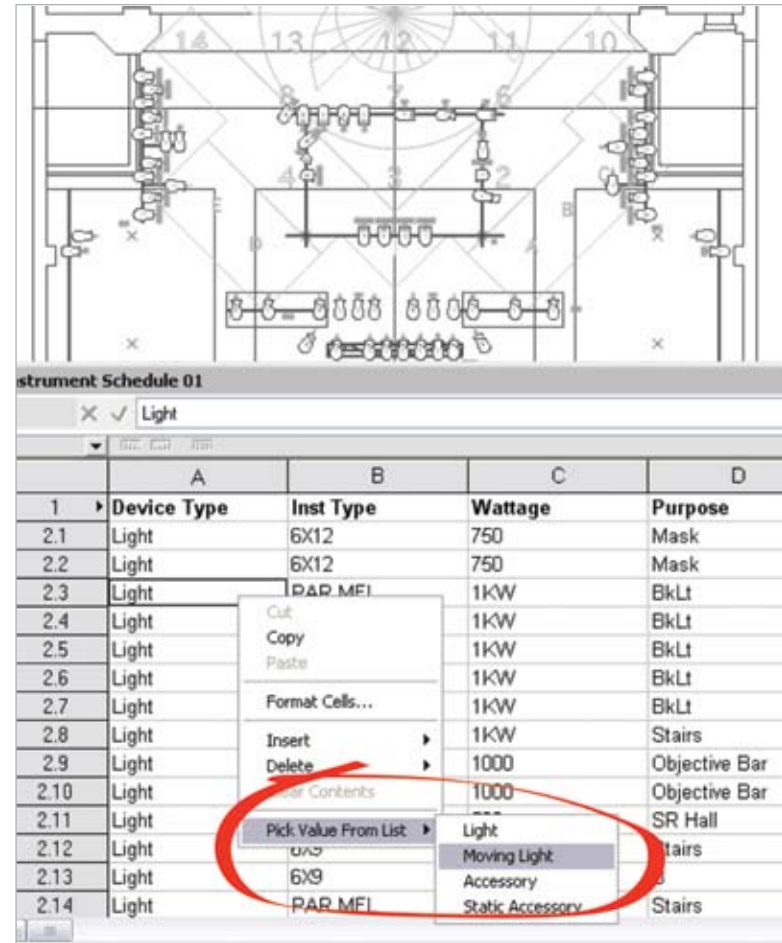


4 Get Über Organized

New CAD manager capabilities make everything easier. Set up, back up, share, and control project files, content libraries, and user preferences. Easily configure new computers with your firm's CAD standards. We've made navigating between library files and documents effortless, and you can save changes in your resources directly back to office-standard libraries with one click.

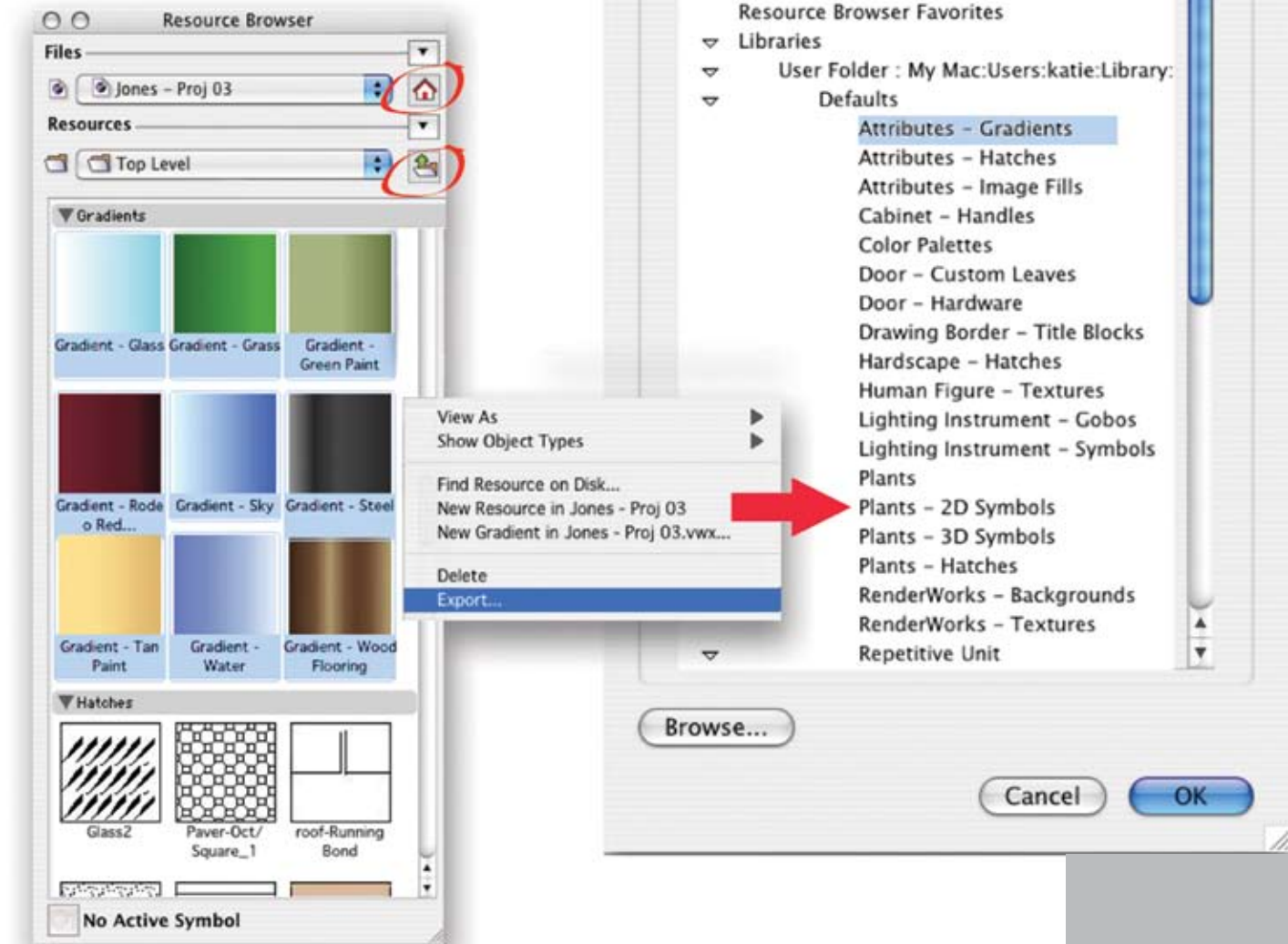


New CAD manager capabilities make it easier to set up, share, back up, and manage VectorWorks content and preferences.

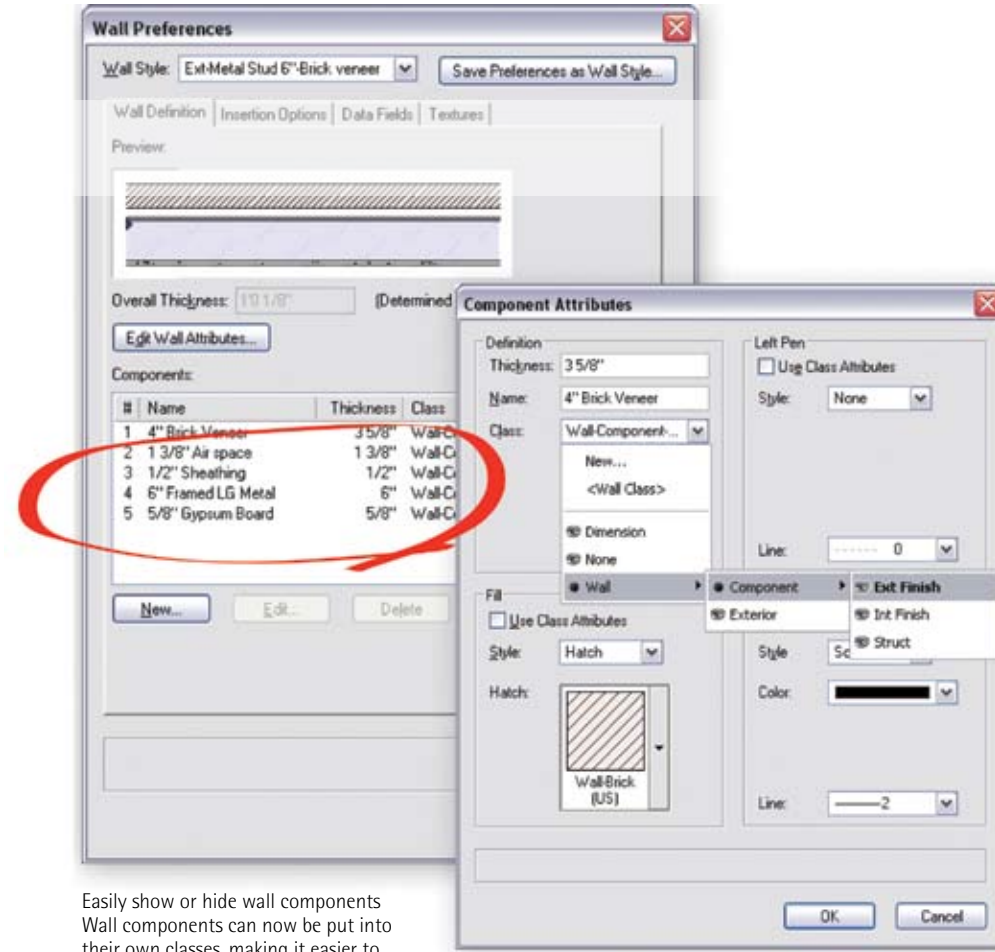
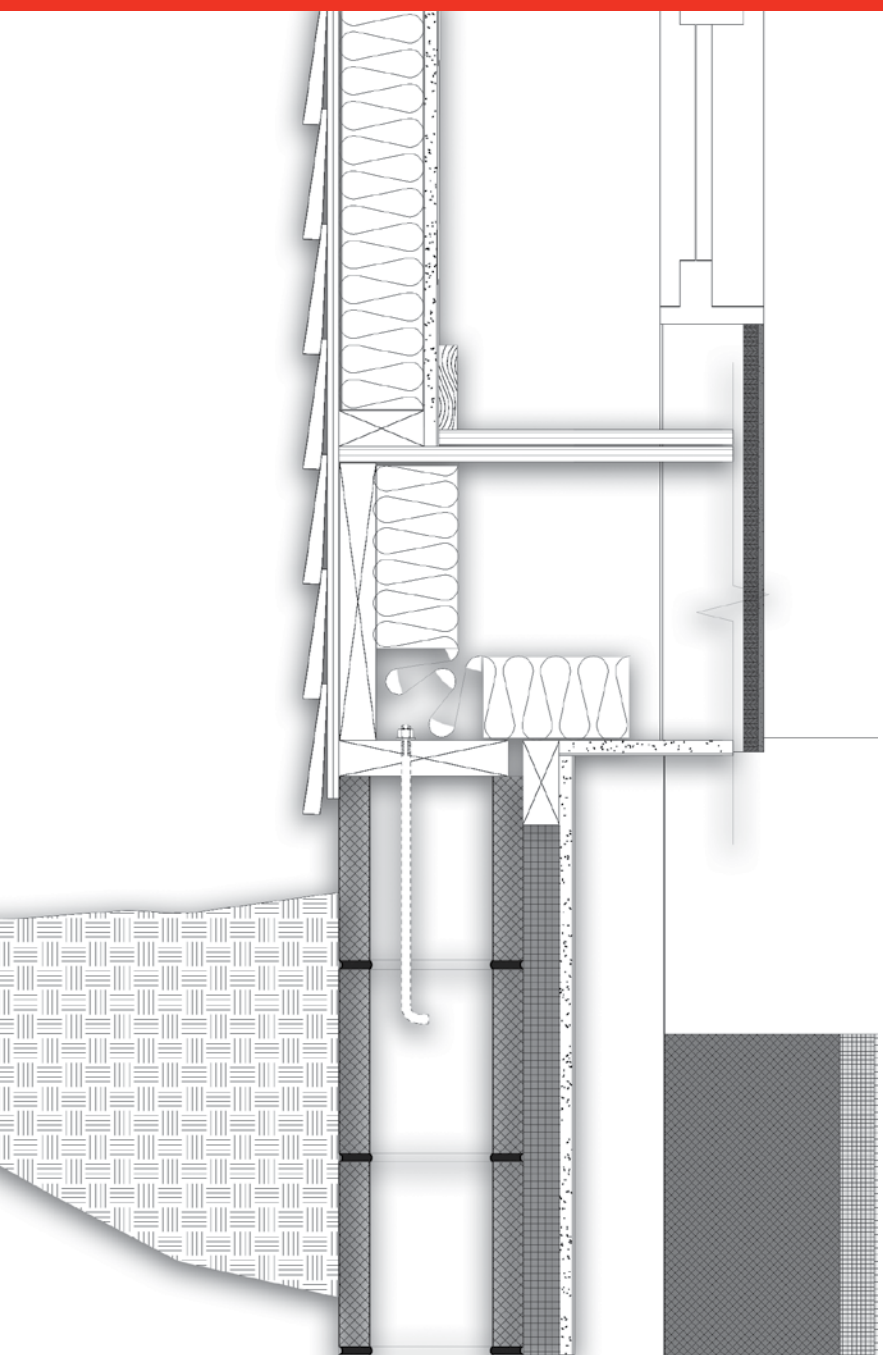


Change an object's data in a worksheet and it will automatically reconfigure the object in the drawing.

A new Home button makes it easy to navigate back to the active document. The One Up Level makes it easy to navigate resource folders. How resources display are saved across sessions. Export resource options make it easy to move resources from your documents to your library files.



VectorWorks What's New

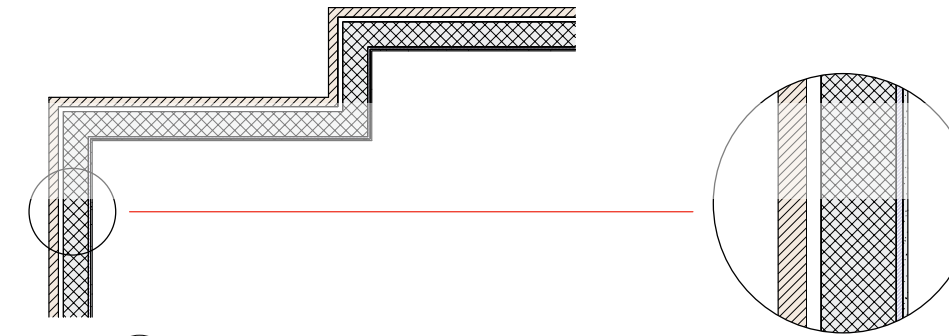


Easily show or hide wall components
Wall components can now be put into their own classes, making it easier to control graphical attributes and visibility.

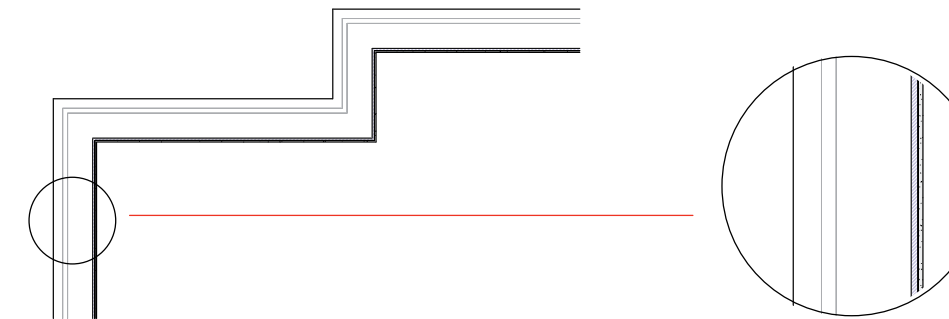
Walls can now display their components in section views.

5 Draw It Once, Use It Again

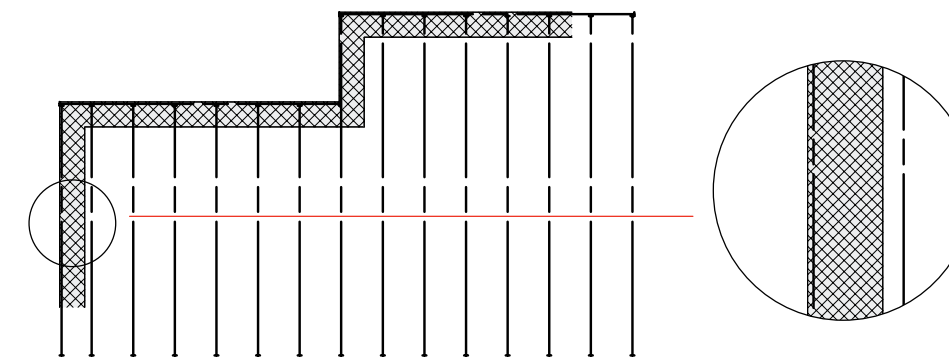
In both 2D and 3D, VectorWorks 2008 will help you re-use your work to create drawings quickly and efficiently. Improved viewports, classable wall components, and the ability to show wall components in section view make it easy to create framing, structural, and finish plans, as well as detailed wall section drawings from the same set of walls.



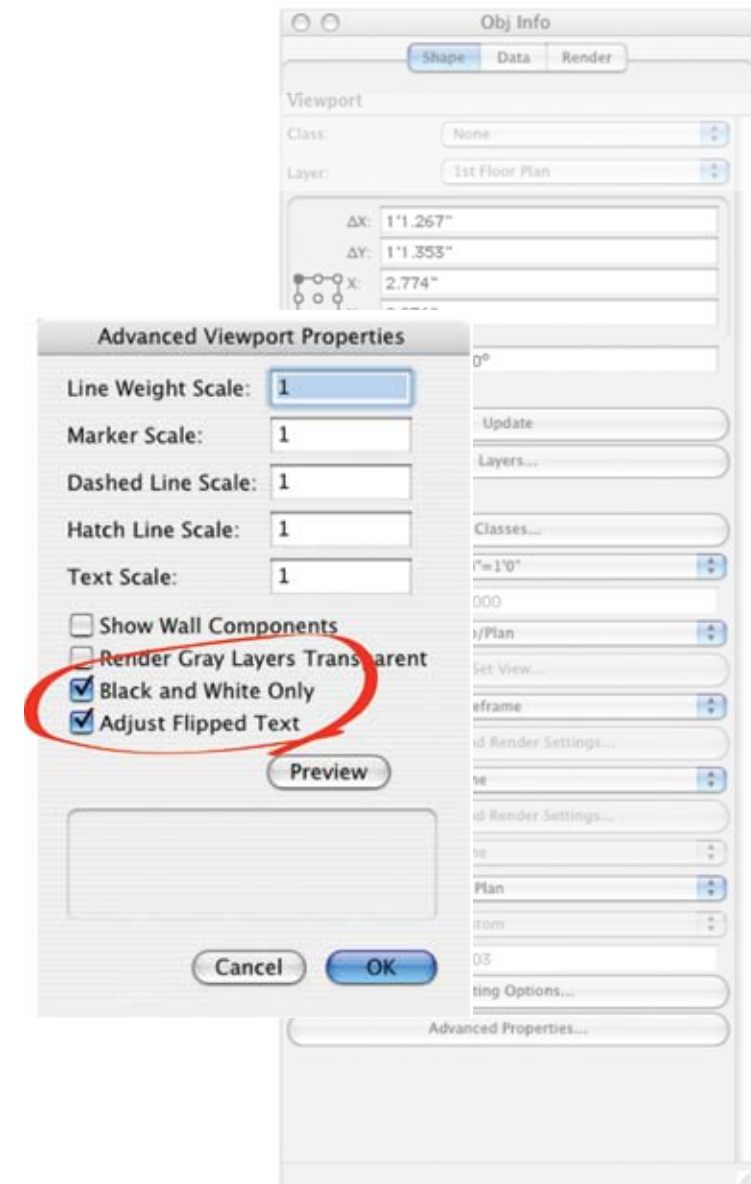
1 Partial Plan-Architectural
A2 Scale: 1/4" = 1'-0"



2 Partial Plan-Interiors
A2 Scale: 1/4" = 1'-0"



3 Partial Plan-Framing
A2 Scale: 1/4" = 1'-0"



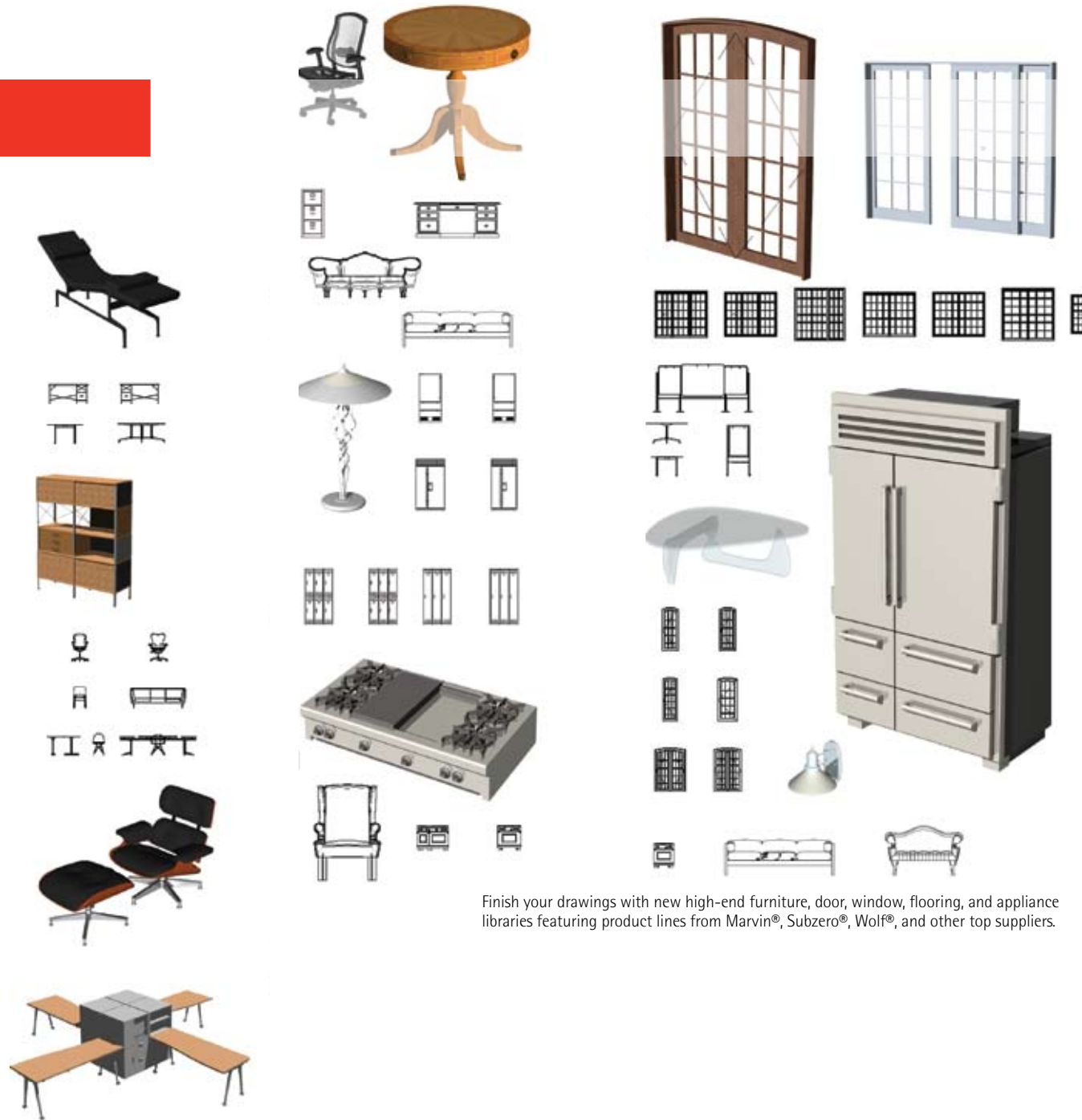
You'll find many time-saving Viewport improvements, including: support for associative dimensions, faster navigation between viewports and design layers, the ability to adjust flipped text, and the ability to display viewports in black and white only.

VectorWorks What's New

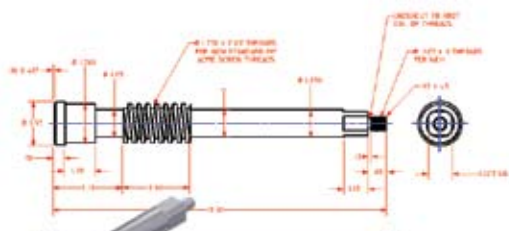
6 Choose from a Vast Catalog of New Content

Why take the time to draw something when somebody else already has? We constantly add new resources to our libraries of standard components so you can spend more time designing. Use the most up-to-date textures, furniture, lighting instruments, plants, and horticultural information to create realistic and stunning designs.

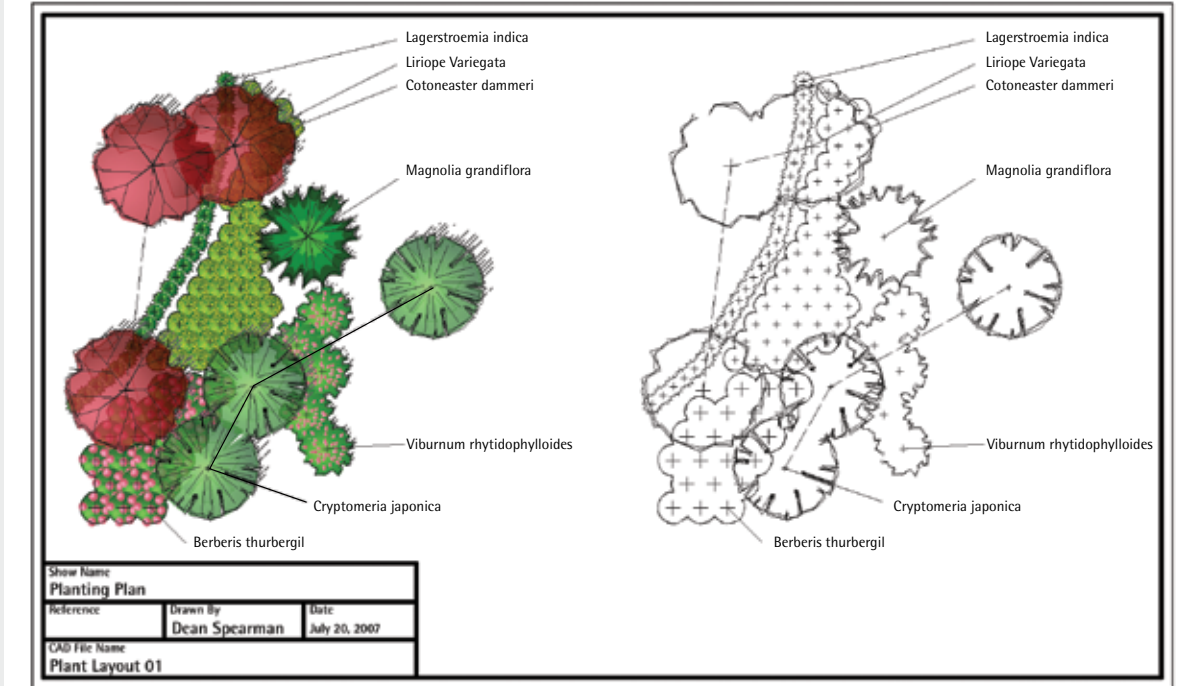
So what are you waiting for? Start using VectorWorks 2008 today.



Finish your drawings with new high-end furniture, door, window, flooring, and appliance libraries featuring product lines from Marvin®, Subzero®, Wolf®, and other top suppliers.



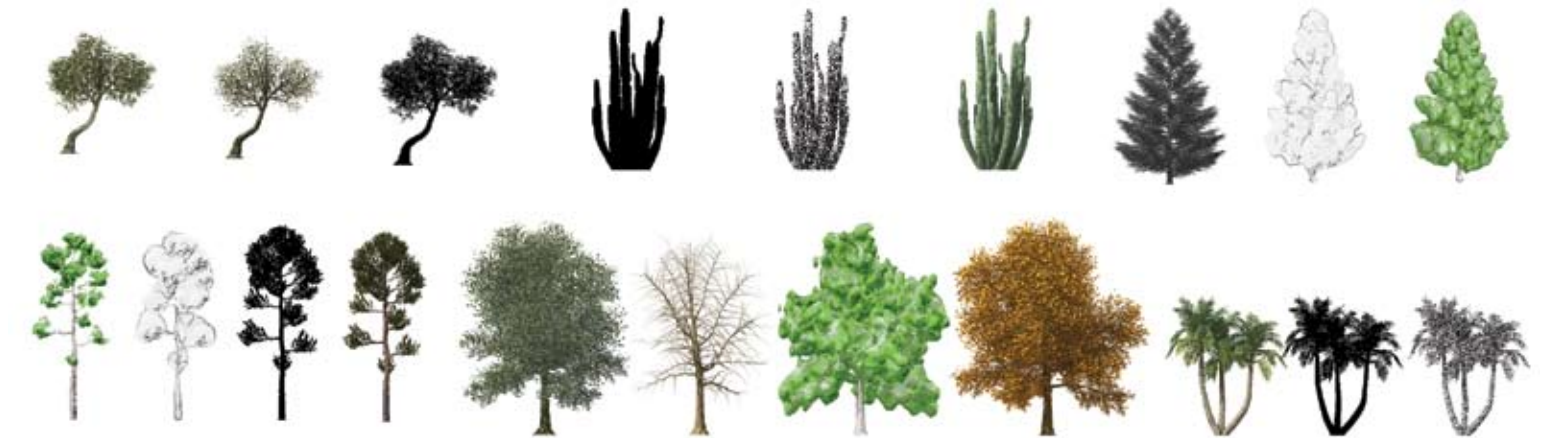
Create custom 2D/3D shaft configurations in one easy step with the new Shaft tool.



New Place Plant tool makes it easier to create and manage plant objects. Easily import and export plant library objects and edit them, too.

Dean Spearman Landscape Architect Winnipeg, Manitoba

The stand-alone, full-featured plant database performs sophisticated plant searches and even allows for quick navigation to online sites. Also, create custom plant lists or catalogs linked to the Place Plant tool.



Enhance your drawings using the improved and expanded Xfrog® plant library with 652 new 3D color images, including 84 new plant species, and new design options.

Features at a Glance

Streamlined Interface

Find what you need instantly. Common controls are all within easy reach.

- New heads-up data display
- Object selection highlighting
- New View bar
- Saved tool preferences and settings
- Faster Editing with object-sensitive context menus
- Automatic object centering when editing
- New modern icons
- Printable keyboard shortcut guide

Drawing Improvements

You'll be amazed at the things you'll be able to do with the new features and improvements to VectorWorks 2008 drafting capabilities.

- Rotatable 2D plan views
- New rotation modes for 2D tools
- New move/duplicate/distribute by points tool
- New 2D/3D Duplicate Along Path command

- Over 180 new marker styles
- Specifiable dashed line lengths
- New polygonal selection mode
- Improved 2D Reshape
- New poly and circle clip tool modes
- Improved Tile command

More Fluent Referencing Workflows and Improved Library Management

Take advantage of new resources and viewport enhancements that provide more flexibility and freedom when working in a referenced design environment.

- New design layer viewports
- True file referencing
- Other important workgroup referencing improvements
- New CAD manager features
- Resource Browser improvements
- Extract and reuse image-based resources
- Improved library management

Enhanced Usability

From two-way worksheets to importing and exporting AutoCAD 2007 and 2008 files, VectorWorks 2008 cuts out extra steps and saves a lot more time.

- Two-way worksheets
- Edit multiple objects in walls simultaneously
- IFC import/export
- Support for SketchUp 6 import
- Support for AutoCAD 2007/2008
- Easier management of Imported AutoCAD Layers
- Support for worksheets in DXF/DWG export
- Improved viewport workflows
 - o Support for associative dimensioning
 - o Improved navigation between viewports and design layers
 - o Improved navigation between crop and annotation modes
 - o Control over section viewport resolution
 - o New viewport flipped text option
 - o Black and white only display settings
 - o Viewport layer overrides

- Cropped layer links
- Global object editing by criteria
- Saved stacked layer view
- Import drawing structure
- Improved auto save
- New scale object by distance option
- Cross-platform workspace format
- Macintosh OSX Spotlight search integration
- New support for bookmarks in PDFs
- Easier to customize title block objects

New and Improved Options

Try all the new options. You'll find improved wall features and new plant and lighting options. Finish your drawings with new high-end furniture, door, window, flooring, appliance, texture, and color libraries.

- Architectural and Interior Design Improvements
 - o Classable wall components
 - o The ability to show wall components in section views
 - o Draw and edit walls in 3D
 - o Exterior wall dimensioner improvements

- o Wall replacement improvements
- o Refined create spaces from walls command
- o Space object improvements (now GSA compatible)
 - o Improved 2D Stair Graphic
 - o Support for BSI and JIS standard steel shapes
 - o Herman Miller® furniture collection
 - o New World Graphics, Inc. furniture library
 - o Updated Marvin® windows and doors catalog
 - o New Sub-Zero® and Wolf® appliance libraries
 - o Updated Forbo® flooring materials
- Landscape Design Improvements
 - o Improved Place Plant tool
 - o Standalone plant database
 - o Support for Geo-referenced Image files.
 - o Updated Xfrog® plant libraries
 - o Unilock® paver hatch patterns

- Entertainment/Lighting Design Improvements
 - o Two-way Spotlight worksheets
 - o Improved non-rotating label legends
 - o Improved scaling of label legends
 - o Advanced light source for lighting instruments
 - o Advanced beam geometry
 - o New lighting, scenic symbols
 - o Lighting device position awareness
- Machine Design Improvements
 - o New 2D and 3D Shaft tool
 - o Ability to automatically add keyways and center drills to shaft segments
 - o Ability to add parts lists to drawing boarders
 - o New screw and nut configurations
 - o New pulley tool
 - o New spur gear rack tool
 - o New center drills

Presentation Improvements

Close every deal with a powerful presentation that sets you apart from all others. We've improved this crucial capability with a number of high-tech features.

- Unlimited color choices
- Color palettes from Pantone®, Benjamin Moor®, Sherwin-Williams®, Resene®, Rosco, and more
- Object-based opacity on Macintosh and Windows
- Layer opacity and anti-aliasing now also on Windows
- 50% faster hidden line rendering
- Interactive OpenGL shadows
- OpenGL backgrounds
- New OpenGL draw edges option
- Final gather rendering for RenderWorks
- New bump shaders for RenderWorks
- Layered rendering effects in viewports
- New Visualization palette for light and camera control
- New grayed layer and class print settings

- New wood textures and image fills from arcitex®
- Support for 3DConnexion SpaceNavigator™

Expanded Customization Options

Make VectorWorks 2008 your own by tailoring it to your needs. CAD managers and third-party developers will appreciate the layout manager improvements.

- Customizable layout manager controls
- Layout manager improve

Find out more

To learn more about all the exciting new VectorWorks 2008 features and see them in action, visit www.nemetschek.net

What's New

VectorWorks 2008

The newest version of VectorWorks is here! VectorWorks is one of the world's best-selling cross-platform CAD applications for the AEC, entertainment, landscape design, and manufacturing industries. The new VectorWorks 2008 is designed to improve workflow, designs, and productivity through:

- Streamlined Interface
- Drawing Improvements
- More Fluent Referencing Workflows
- Improved Library Management
- Enhanced Usability

Minimum System Requirements

Mac OS X 10.4.10 or later

QuickTime 6 or higher
PowerPC G4 or newer
Universal binary runs native on Intel Macs

Windows XP SP 2, Windows Vista

QuickTime 6.5.2 to 7.2
(higher versions not recommended)

VectorWorks

RAM 1GB
Hard drive space 4GB free

VectorWorks plus RenderWorks

RAM 2GB
Hard drive space 4GB free

VectorWorks Designer

RAM 1GB
Hard drive space 6GB free

VectorWorks Designer plus RenderWorks

RAM 2GB
Hard drive space 6GB free



Nemetschek N.A. Inc.
7150 Riverwood Drive
Columbia, MD 21046

T 888-646-4223
T 410-290-5114
F 410-290-8050

www.nemetschek.net