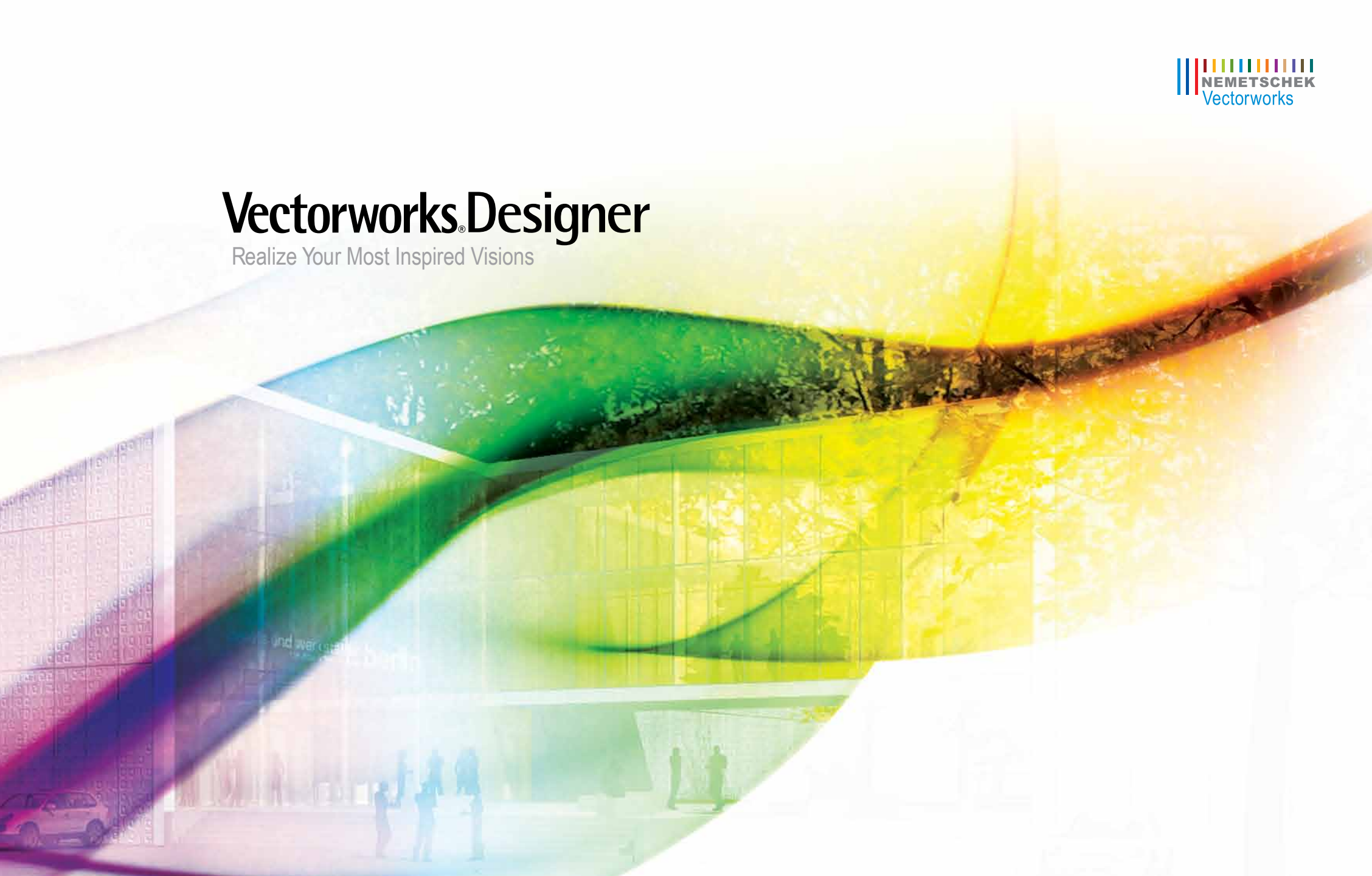


Vectorworks® Designer

Realize Your Most Inspired Visions



Vectorworks® Designer

Realize Your Most Inspired Visions

Flexible:

Enjoy the Freedom to Design the Way You Want

Versatile:

Create, Model, and Present with One Application

Intuitive:

Work the Way You Think

Smart:

Invest in Yourself

Accelerate Your Designs.

Increase your efficiency. Up your productivity. Go where you want to go. With the new technology in the Vectorworks Designer 2012 software, you can create whatever you dream up—with even greater efficiency and increased productivity. Our flexible, intuitive, and smart features continue to give Vectorworks Designer software the edge in 3D modeling, BIM, Site Information Modeling (SIM), and integrated rendering. You get better collaboration, usability, and efficiency. So where would you like to take your work? Where will it take you? Start here. Accelerate your designs in 2012.

Flexible: Enjoy the Freedom to Design the Way You Want

With the Vectorworks Designer software you're not limited to a prescribed workflow, so you have the freedom to design in your own way. Incorporate your existing approach to design to make the best use of the skills you already have in-house. Collaborate seamlessly with other people and with other software applications. Here are some of the flexible features Vectorworks offers:

Freeform Modeling

Whether you're working in 2D or 3D, unified view mode lets you draft or model within a unified coordinate system. With an intuitive interface, you can design from any 3D view using modes in modeling tools that automatically infer working planes as you move your cursor, and enjoy the superior quality that allows you to manipulate your model with ease. More accurate object information and better snapping make drawing in 3D so easy. The SmartCursor™ helps you by showing hints, like the angle from the previous segment, as you draw. Plus, an advanced suite of solids and NURBS modeling tools allows you to create any shape and easily explore organic geometry. Push, pull, blend, twist, sculpt, deform, or punch holes.

Design Anything

Many CAD applications restrict your ability to design beyond a core discipline. Whether your specialty is architecture, landscaping, or entertainment design, the Vectorworks Designer program gives you the freedom to create without having to learn or use additional applications. Anything's possible with the Vectorworks Designer 2012 software.

Efficient Workgroup Capabilities

Break up complex projects. Whether you're a sole practitioner subbing out work or a large firm dividing work among different members of the team, Vectorworks Designer's workgroup referencing provides a flexible way to split even the most complicated project into manageable pieces.

Easy File Translation

Get in on the cutting edge of digital practice, and move your building models fluidly between design, analysis, and construction packages with Vectorworks' IFC 2x3 translator. Import and export AutoCAD® 2012 (and earlier) files. Send out drawing sets as multi-page PDFs.

Google Friendly

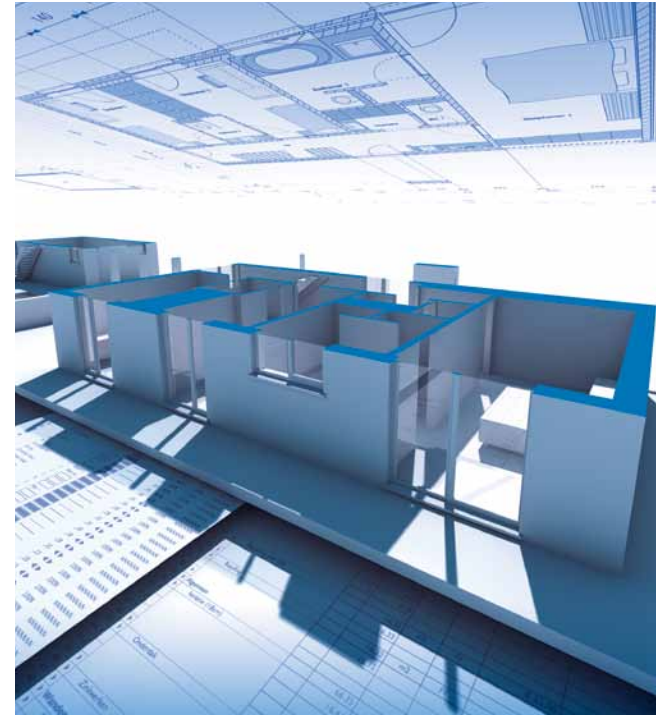
Import concept models from SketchUp® and access thousands of models from Google's 3D Warehouse. Export 3D models to Google Earth®.

Endless Digital Images

Make your work even more compelling and easier to communicate with digital imagery. Import scans, digital photos, or web images. Import or export a wide array of image files, including Illustrator® EPS and native Photoshop® PSD files. Also, export your design for inclusion in your firm's marketing materials or website.

Cutting Edge 3D

See it in 3D. Send models to CAD/CAM machines, CNC routers, and other 3D printers. The Vectorworks Designer package supports a number of standard 3D file formats, including Parasolid X_T, IGS, SAT, KML, STL, and 3DS.



Courtesy of © Sousa Santos | Bruno Ferraz.

Completely Customizable Programming

Automate routine tasks or create full-blown add-on applications with our Pascal-based scripting language, VectorScript™. It's simple enough for a beginner, yet powerful enough for the most experienced CAD programmer.



"Speechless...a masterpiece! My absolute favorite!"
-Carlotta Birelli, Architect, Düttmann + Kleymann



Supporting Sustainable Building

When your goal is sustainability, the Vectorworks Designer application is an indispensable tool. You can maximize materials and minimize energy expenditure with our built-in spreadsheets that calculate building performance through programming analysis (with parametric Space objects), detailed material take-offs, and lighting requirements. You can conduct sun studies with the Heliodon tool. And you can export data-rich building models using the Industry Foundation Classes (IFC) 2x3 interoperability standard used by energy simulation, material take-off and costing, and 4D construction sequencing applications. With such comprehensive data, you'll answer the "how many" and "how much" early in the process, and ensure a smaller carbon footprint.

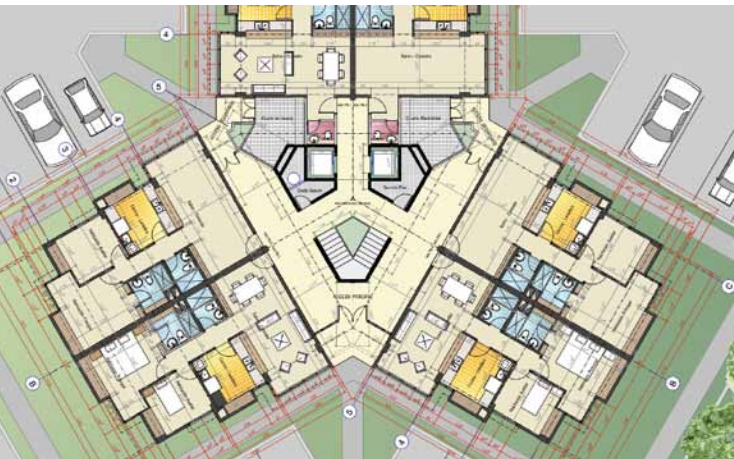
Versatile: Create, Model, and Present with One Application

Move easily between tasks. From design concepts to construction documentation and every phase in between, the Vectorworks Designer program marries precision drafting and flexible modeling with state-of-the-art technology. Create, model, and present easily and precisely with one application. With the Vectorworks Designer software, you can do it all.

The program boasts a comprehensive set of design tools to support your entire practice. You have complete functionality for:

Powerful Conceptualization

Find your inspiration and start drawing. Or if you would like, import hand sketches, pictures of the site, and even documents from other applications. Invoke ideas in 2D, and explore them in 3D with freeform models.



Courtesy of Arquitectura AG, image by Armando Gutierrez.



Courtesy of © Arch & Teco.

Building Information Modeling (BIM)

With Vectorworks Designer software, you can create building information models without changing your preferred design process. Whether you're looking to streamline costs, analyze materials, increase energy efficiency, or just create world-class designs, the Vectorworks Designer solution is an efficient way to introduce BIM capabilities into your workflow. Enjoy the robust and flexible capabilities of BIM with the ease of design, great documentation, and intelligent tools that the software is known for—right from the start.



"There are many fine and talented folks who generously share their wit and wisdom with all. The online community is populated with various levels of Nemetschek Vectorworks employees (support personnel all the way to VPs) who chime in quite regularly." –Patrick J. Immel

With the unsurpassed Parasolid® modeling kernel from Siemens PLM Software, the Vectorworks Designer program has mastered BIM with design and presentation capabilities and arguably the best 3D modeling core in the business. You can create almost any shape imaginable and maintain a parametric model with the Dimensional Constraint Manager functionality. Everything is associated, so all geometry links to dimensions and vice versa. With the click of a mouse, all views are updated...all at once! For more, check out www.Vectorworks.net/BIM.

Superior 2D

Produce high-quality construction documents with ease. The Vectorworks application offers precision drafting tools, intelligent objects for building, detailing, MEP, furniture, millwork, machine parts, annotations, and thousands of free symbols from leading building product companies. A database enables you to store, manage, and recall notes. The Issue Manager keeps track of what, when, and to whom files were issued, and it automatically dates your title blocks. Batch print drawing sets or export them as multi-page PDFs at full or reduced sizes.

Automatic Reporting and Analysis

Stop counting items in your drawings. Automatic data tracking does the tedious work for you. The application goes further than automated schedules, materials takeoffs, and bill of materials lists. It provides a user-defined way to assign specific data to any object and create custom reports. Since the report and the drawing can be linked, a change in one will update the other.

Powerful Presentations

Define and communicate your signature look with our advanced, high-end technology that's famous for helping our users achieve beautiful, graphically rich presentations. Tap into our large libraries of entourage and unlimited palettes of colors. Your style is not limited by "cookie-cutter" looks. Add gradients, tile and image fills, stipples, and hatching. Easily import digital images and graphics. Use our exclusive sketch rendering technology to change hard-lined drawings into soft, hand-sketched illustrations. Multiple page layout options make it simple to arrange presentation boards.



Courtesy of © Randy Brown Architects | Design Express.

Renderworks

If you think Renderworks® looked good before—wait until you see this! We've teamed with the award-winning CINEMA 4D render engine to provide rendering capabilities that are faster and easier. Renderworks is fully integrated into Vectorworks, so it works seamlessly to allow you to visualize your work throughout the design process, producing clear and accurate renderings. With the click of a button, rendered viewports will update as your design evolves.



Courtesy of h4a Gessert + Randecker Architekten BDA.

Intuitive: Work The Way You Think

Easy-to-use Interface and Drafting Tools

Do what you like to do best—design. You won't waste time getting up to speed because the software's simple, customizable interface and what-you-see-is-what-you-get display make it easier to learn and use than standard CAD applications. Vectorworks' SmartCursor technology replaces manual drafting tools, so even inexperienced CAD users can make the switch easily.

Tailored for Your Success

Work in tandem with the application. The Vectorworks Designer software is designed to work the way you think, so you can design anything you dream up. The Vectorworks Designer product maximizes the exclusive technology from all our design products—Fundamentals, Architect, Landmark, and Spotlight. It offers the largest set of tools available in any CAD application. No matter what you're working on, there are specialized tools to help you get your job done efficiently and effectively.



Courtesy of Diana Kesselschmidt.

Smart: Invest in Yourself

Affordable, customer-focused, and proven as the tool of choice for 450,000 designers worldwide—Vectorworks software is a smart investment.

Affordable

You won't find another professional design application that includes so much for such a reasonable price. In one package, you get state-of-the-art tools and technology and the ability to work from conception to completion—a great value. You also get free software updates and affordable upgrades. With free technical support and cost-effective training options, you get value far beyond your initial savings. We never force subscriptions, so you're free to upgrade when and how you choose. As your business grows, we add extra seats at a discounted price. We offer exceptional value and no hidden fees.

Customer Focused

Relax. We're here for you every step of the way. We listen and learn from your input—that's how the Vectorworks Designer software is created. So your relationship with us doesn't end when you install the software. We provide many channels for you to get the information you need. If you'd like training, take advantage of our multiple offerings: onsite, online, or in the classroom. If a technical issue stumps you, contact our technical support team for help. You can also tap into our worldwide Vectorworks community and user groups on the local level. E-mail listservs provide assistance around the clock, or you can use our service directory and job board to find help.

Vectorworks users often find themselves in Internet-based dialogues with our engineers and managers. We take pride in cultivating lasting relationships with our users, and we translate their feedback into positive product developments. With your input, we can continue to develop software that exceeds your expectations. After all, your success is our success.

A Tradition of Excellence

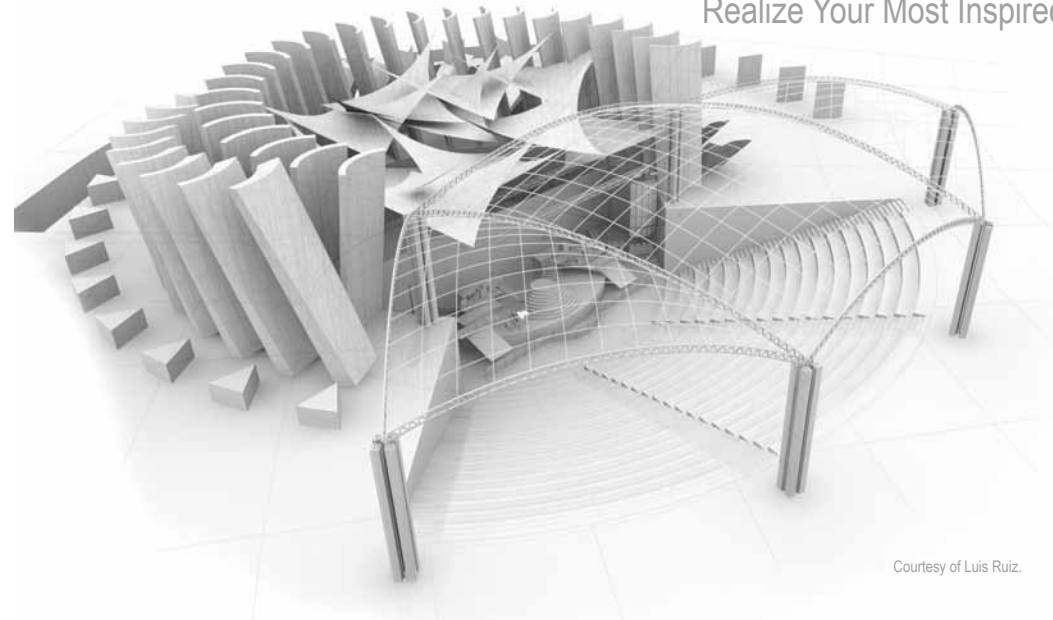
Be part of a long tradition of excellence. The company was founded over 25 years ago, and the Vectorworks product line now counts more than 450,000 professional designers worldwide. We listen to our customers and use their feedback to create a product that continually exceeds their expectations, delivering superior design flexibility and world-class graphics.

The Vectorworks product line is the best-selling cross-platform professional CAD software and the preferred application for world-renowned and award-winning designers who move the design world forward every day.

The Vectorworks product line is produced by Nemetschek Vectorworks, Inc., a wholly owned subsidiary of Nemetschek AG, which is the world's leading IT company for the design, construction, and management of buildings and real estate. Nemetschek software solutions are used by design professionals in 142 countries and translated into eight languages.

With the Vectorworks Designer 2012 software, the tradition continues.

Vectorworks Designer
Realize Your Most Inspired Visions



Courtesy of Luis Ruiz.



Nemetschek Vectorworks, Inc.
7150 Riverwood Drive, Columbia, MD 21046-1295 USA
www.vectorworks.net
T 410-290-5114 | F 410-290-8050

Cover imagery courtesy of © Michael Schanné - www.av1architekten.de

©2011 Nemetschek Vectorworks, Inc. All rights reserved.
Vectorworks and Renderworks are registered trademarks of Nemetschek Vectorworks, Inc.
VectorScript and SmartCursor are trademarks of Nemetschek Vectorworks, Inc.
Parasolid is a registered trademark of Siemens Product Lifecycle Management Software, Inc.

System Recommendations

Mac OS X 10.5.7 or later
QuickTime
Intel Core 2GHz or better
DVD-ROM drive (dual layer)
Screen resolution 1280 x 800 recommended
Display color depth 15 bit or higher

Windows XP SP 3
Windows Vista SP 2
Windows 7
QuickTime 7.6.0 to 7.6.9 (higher versions not recommended)
Pentium 2GHz or better
DVD-ROM drive (dual layer)
Screen resolution 1280 x 800 recommended
Display color depth 15 bit or higher

Vectorworks
RAM 1GB minimum, 4GB recommended
Hard drive space 10GB free

Vectorworks with Renderworks
RAM 2GB minimum, 4GB recommended
Hard drive space 10GB free

Vectorworks Designer
RAM 1GB minimum, 4GB recommended
Hard drive space 10GB free

Vectorworks Designer with Renderworks
RAM 2GB minimum, 4GB recommended
Hard drive space 10GB free

See www.vectorworks.net/sysreq/ for updated information.