

REALIZE YOUR MOST INSPIRED VISIONS



Vectorworks® Architect 2013
EVOLVE WITH VECTORWORKS ARCHITECT



VECTORWORKS ARCHITECT 2013

FLEXIBLE

Enjoy the Freedom to Design the Way You Want

VERSATILE

Create, Model, and Present with One Application

INTUITIVE

Work the Way You Think

SMART

Invest in Yourself

As your process evolves, the tools you use to realize your creative visions need to evolve, as well. We understand this, and we've worked throughout the past year to adapt the Vectorworks family of design solutions to your needs.

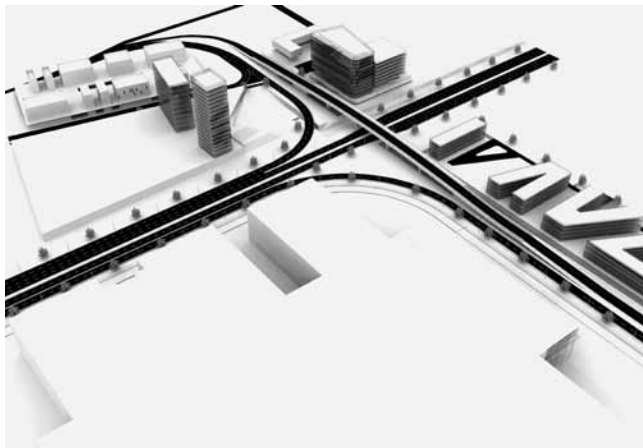
Evolve.

Increase your efficiency. Boost your productivity. Go where you want to go. If you're an architect with an efficient CAD workflow making the transition between CAD and Building Information Modeling (BIM), or if you're deep into implementing BIM techniques and workflows, we know your process as a designer is evolving. With new technology in the Vectorworks Architect 2013 software, you can create whatever you dream up—with even greater efficiency and increased productivity. Our flexible, intuitive, and smart features continue to give Vectorworks Architect software the edge in drawing, 3D modeling, BIM, integrated rendering, and high-quality presentations. You get better collaboration, easy usability, and efficient features. Streamline your workflows...improve your efficiency...evolve with Vectorworks 2013.

FLEXIBLE: ENJOY THE FREEDOM TO DESIGN THE WAY YOU WANT

With the Vectorworks Architect program, you're not limited to a prescribed workflow, so you have the freedom to design in your own way. Incorporate your existing approach to design to make the best use of the skills you already have in-house. Collaborate seamlessly with co-workers and colleagues who use other software applications. Here are some more compelling reasons to purchase or upgrade:

- Use a quick sketch or a simple diagram when that's all you need.
- Put together winning 2D/3D presentations.
- Turn your project team loose with the outstanding production tools of the Vectorworks software.
- Incorporate BIM technology when it's right for the client and project—without turning the firm upside down.



Courtesy of Arch & Teco

Free-form Modeling

With our intuitive interface, you can design from any 3D view using modes in modeling tools that automatically infer working planes as you move your cursor, and enjoy the superior quality that allows you to manipulate your model with ease. More accurate object information and better snapping make drawing in 3D easy. The SmartCursor™ helps by showing hints, like the angle from the previous segment, as you draw. Plus, an advanced suite of solids and NURBS surface tools lets you create any shape and easily explore organic geometry. Push, pull, blend, twist, sculpt, deform, or punch holes. Anything is possible with Vectorworks Architect 2013.

Going Beyond the Building

Architecture is more than just the building. With the Vectorworks Architect program, you can design anything—graphics, interior details, hardware, furniture, fittings, site, or whatever you can imagine—without having to learn or use additional applications.

Efficient Workgroup Capabilities

Break up complex projects. Whether you're a sole practitioner collaborating with other professionals or a large firm dividing work among different members of the team, workgroup referencing provides a flexible way to split even the most complicated project into manageable pieces.

Interoperability

Get on the cutting edge of collaborative digital practice, and move your building information models fluidly between design, analysis, and construction packages with Vectorworks software's IFC 2x3 and gbXML translators. Exchange 3D NURBS models with Rhinoceros® 3D. Import concept models from SketchUp® and access thousands of models from Trimble® 3D Warehouse. Import and export AutoCAD® 2012 (and earlier) files. Send out drawing sets as multi-page PDFs. Export 3D models to Google Earth®.

Supporting Sustainable Building

When your goal is sustainability, the Vectorworks Architect application is an indispensable tool. You can maximize materials and minimize energy expenditure with our built-in spreadsheets that calculate building performance through programming analysis (with parametric Space objects), detailed material take offs, and lighting requirements. You can also conduct sun studies with the Heliodon tool. And if you need the power of more sophisticated building performance, simulation, and energy analysis tools, leverage our partnership with Integrated Environmental Solutions Limited by exporting data-rich building models using the Industry Foundation Classes (IFC) 2x3 interoperability standard or gbXML and importing them into IES-VE Pro or Gaia. With such comprehensive data, you'll answer all the "how many" and "how much" questions early in the process, and ensure a smaller carbon footprint.



"Vectorworks Architect is a tool with flexible workflows that helps us keep an excellent response time in accordance with our philosophy, and this really helps us outperform competitors to win projects."

– Paulo Fernandes Pedroso, architect and founder, Inoxidar, Lisbon, Portugal

Endless Digital Images

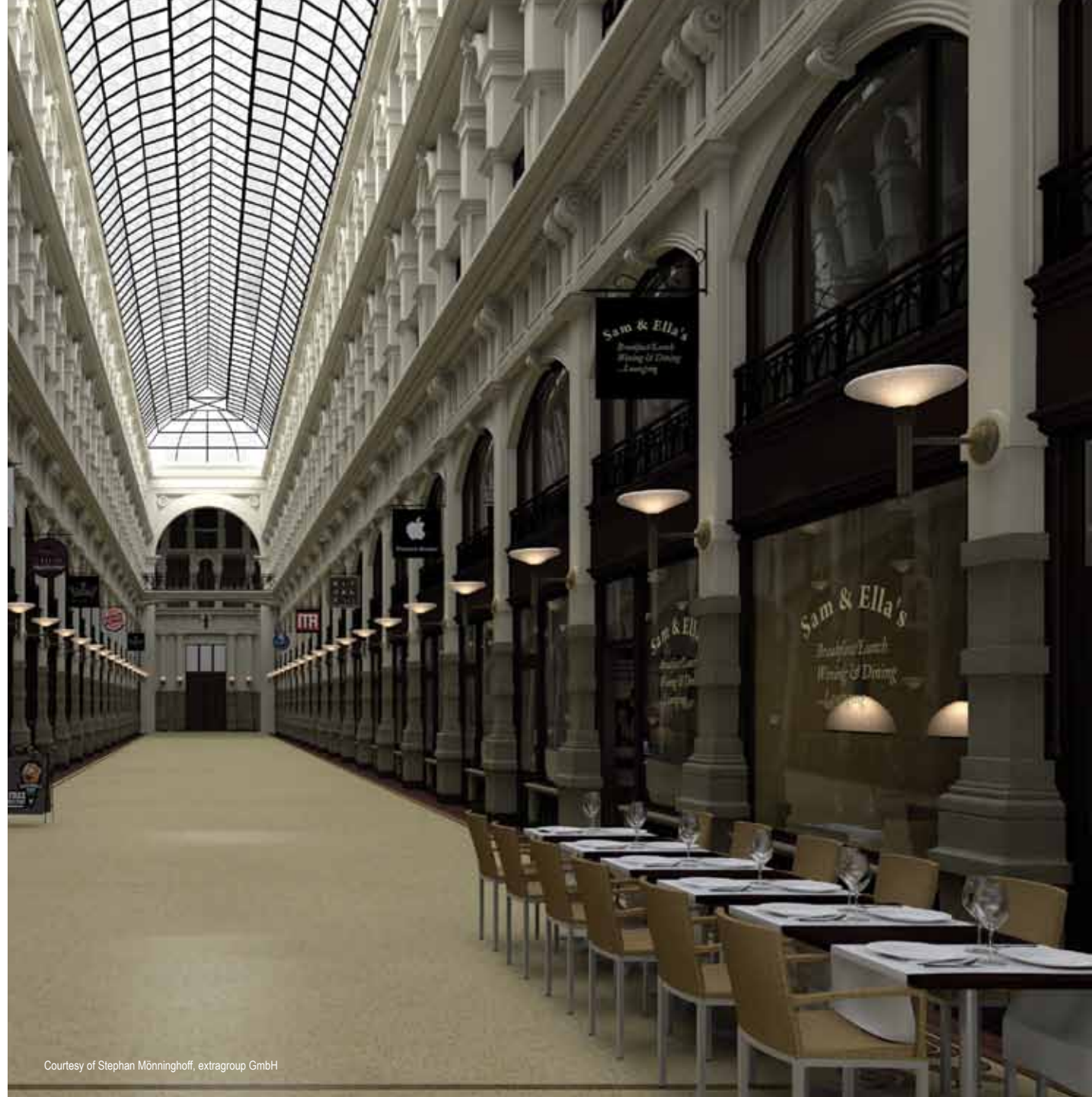
Make your work even more compelling and easier to communicate with digital imagery. Import scans, digital photos, or web images. Import or export a wide array of image files, including Illustrator® EPS and native Photoshop® PSD files. Also, export your design for inclusion in your firm's marketing materials or website.

Cutting-edge 3D

See it in 3D. Send models to CAD/CAM machines, CNC routers, and other 3D printers. The Vectorworks Architect package supports a number of standard 3D file formats, including Parasolid® X_T, IGES, SAT, KML, STL, and 3DS.



Courtesy of punto design



Courtesy of Stephan Mönninghoff, extragroup GmbH

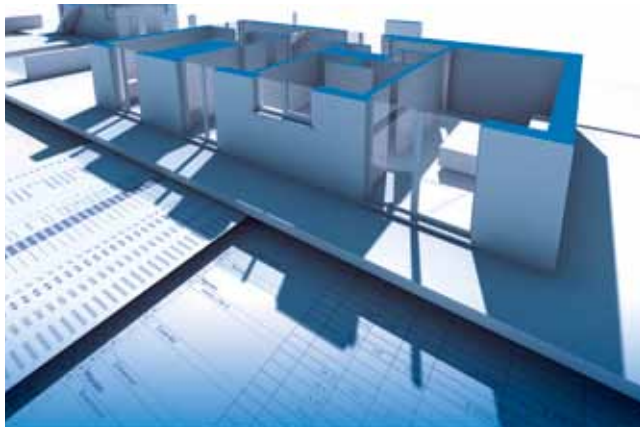
VERSATILE: CREATE, MODEL, AND PRESENT WITH ONE APPLICATION

Move easily between tasks. From design concepts to construction documentation and every phase in between, the Vectorworks Architect program marries precision drafting and flexible modeling with state-of-the-art technology. Create, model, and present easily and precisely with one application. With Vectorworks Architect software, you can do it all.

The program boasts a comprehensive set of design tools to support your entire practice. You have complete functionality for:

Powerful Conceptualization

Find your inspiration and start drawing. Or, if you like, import hand sketches, pictures of the site, and even documents or models from other applications. Invoke ideas in 2D, and explore them in 3D with free-form models.



Courtesy of © Design Express

Building Information Modeling (BIM)

With Vectorworks Architect software, you can create building information models without changing your preferred design process. Whether you're looking to streamline costs, analyze materials, increase your energy efficiency, or just create world-class designs, the Vectorworks Architect solution is an efficient way to introduce BIM capabilities into your workflow. Enjoy the robust and flexible capabilities of BIM with the ease of design, great documentation, and intelligent tools that the software is known for—right from the start.

With the unsurpassed Parasolid modeling kernel from Siemens PLM Software, the Vectorworks Architect program has mastered BIM with design and presentation capabilities and, arguably, the best 3D modeling core in the business.

Use integrated tools, such as columns, framing members, roofs, walls, slabs, doors, and windows to effortlessly create building models. Take advantage of 3D wall and slab components that produce dynamic and accurate wall sections and material estimates. If the variety of standard parametric objects is not enough, you can create almost any shape imaginable, assign BIM data to it, and integrate it with the rest of the building model.

Our BIM workflows are further enhanced with space planning tools, wall and roof framing tools for detailed construction modeling, and our Heliodon feature to conduct solar studies.



“There is no doubt that the speed and quality of work we produce is an advantage over practices using an engineering CAD package. The software allows us to present our innovative designs in the best possible light.” – John Lee, Founder, Arca Architects, Manchester, England

Finally, create linked elevation, section, and detailed views of the model for documentation and presentations. With the click of a mouse, any changes made to the building model are updated in the views all at once!

For more information, check out www.Vectorworks.net/BIM.

Extensive Automated Reporting and Database Support

Stop manually counting items in your drawings. Automatic data tracking does the tedious work for you—built-in database worksheets continually keep tabs. Take advantage of the two-way link between database worksheets and objects, and gain the power to change object parameters directly from the worksheet. The application goes further than automated schedules and material take offs. It provides a user-defined, quick, and accurate way to assign custom data to any object and create unique reports.

The Notes Manager database lets you store, manage, and recall document notation. The Issue Manager keeps track of what, when, and to whom drawings and files were issued, and it automatically dates your title blocks.

When it is important to connect to data sources outside of Vectorworks software, our ODBC module gives you the power to link to databases and connect objects in Vectorworks to the external records and fields for bi-directional reporting and control.

Superior 2D Documentation

Produce high-quality construction documents with ease. The Vectorworks Architect application offers precision drafting tools, intelligent objects for building, detailing, MEP, furniture, millwork, machine parts, annotations, and thousands of free symbols from leading building product companies. Batch print drawing sets or export them as multi-page PDFs at full or reduced sizes.



Courtesy of Henn Architekten

Powerful Presentations

Define and communicate your signature look with our advanced, high-end technology that's famous for helping our users achieve beautiful, graphically rich presentations. Tap into our large libraries of entourage and unlimited palettes of colors. Your style is not limited by “cookie-cutter” looks. Instead, add gradients, tile and image fills, stipples, and hatching. Easily import digital images and graphics. Use our exclusive sketch rendering technology to change hard-lined drawings into soft, hand-sketched illustrations. Multiple page layout options make it simple to arrange presentation boards.

Renderworks

We've teamed with the award-winning CINEMA 4D render engine to provide rendering capabilities that are faster and easier. Renderworks® is fully integrated into Vectorworks Architect software, so it lets you seamlessly visualize your work throughout the design process, and produce clear and accurate renderings. With the click of a button, rendered viewports will update as your design evolves.



Courtesy of Luis Ruiz

INTUITIVE: WORK THE WAY YOU THINK

Easy-to-use Interface and Drafting Tools

Do what you like to do best—design. You won't waste time getting up to speed, because the Vectorworks Architect software's simple, customizable interface and what-you-see-is-what-you-get display make it easier to learn and use than standard CAD applications. No matter what you're switching from, the Vectorworks Architect interface will be familiar. Vectorworks software's SmartCursor technology replaces manual drafting tools, so even inexperienced CAD users can make the switch easily.

Tailored for Your Success

Work in tandem with the application. Vectorworks Architect software is designed to work the way you think. In addition to designing with lines, arcs, and circles, you can design with walls, doors, windows, roofs, and slabs. The building objects are easy to edit and display in both 2D and 3D views. And with our scripting language, VectorScript™, you can program everything from simple scripts that automate routine tasks to full-blown commercial applications.

"We love beautiful design, and Vectorworks Architect helps us achieve it. The powerful and affordable program is rigorous and elegant at the same time. Its strong artistic and pictorial capabilities—and above all its transparency—allow us to express ourselves better." – Giusto, Maggini, and Pagnano | Mimesi 62 Associated Architects | Florence, Italy

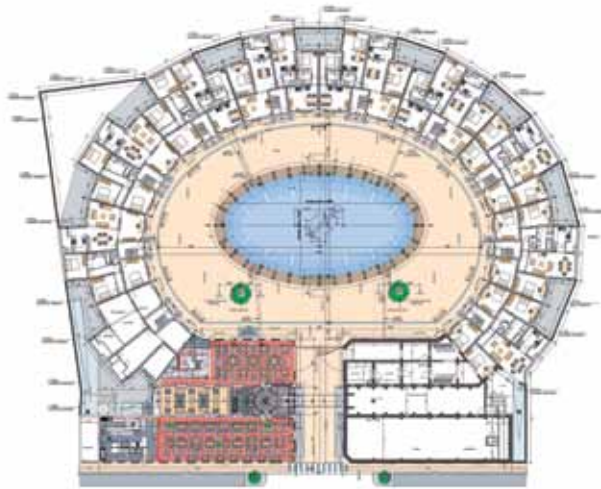


SMART: INVEST IN YOURSELF

Affordable, customer-focused, and proven as the tool of choice for 450,000 designers worldwide, Vectorworks software is a smart investment in you.

Affordable

You won't find another professional design application that includes so much for such a reasonable price. In one package, you get state-of-the-art tools and technology and the ability to work from concept through completion—what a great value. You also get free service packages, technical support, and affordable training options. Plus, become a member of our Vectorworks Service Select program, and you'll receive free software updates, additional learning resources, preferred support status, access to Vectorworks Cloud Services, and predictability for your budget. Service Select is the best way to stay current with your software and get the best value.



Courtesy of renovatie Zebrastraat Gent © Restyling | ASA



Courtesy of The Loop Kunstwerken © Arch & Teco

Customer-focused

Relax. We're here for you every step of the way. We listen and learn from your input—that's how Vectorworks Architect software evolves. This means your relationship with us doesn't end when you install the software. Instead, we provide many channels for you to get the information you need. If you'd like training, take advantage of our multiple offerings: onsite, online, or in the classroom. If a technical issue stumps you, contact our technical support team for help. You can also tap into our Vectorworks community of enthusiastic users worldwide, as well as user groups on the local level. E-mail listservs provide assistance around the clock, or you can use our service directory and job board to find help.

Vectorworks users often find themselves in internet-based dialogues with our engineers and managers. We take pride in cultivating lasting relationships with our users, and we translate their feedback into positive product developments. With your input, we can continue to develop software that exceeds your expectations. After all, your success is our success.

"Vectorworks software is something that works better, costs less, and the drawing ends up looking exactly like I want it to; it's very controllable. I wouldn't use anything else." – Duane Ensing, Owner and Creative Director, Duane Ensing Landscape Design, Victoria, Canada

A Tradition of Excellence

The company was founded more than 27 years ago, and the Vectorworks product line now serves more than 450,000 professional designers worldwide. We listen to our customers and use their feedback to create products that continually exceed their expectations, delivering superior design flexibility and world-class graphics.

The Vectorworks product line is the best-selling, cross-platform professional CAD software and the preferred application for world-renowned and award-winning architects like Studio Daniel Libeskind, Matteo Thun, Jeppe Utzon, Platane Beres, Oscar Bressane, Roberto and Renato Candusso, Paulo Fernandes Pedroso, and tecARCHITECTURE, as well as countless others who power the design world forward every day.

Vectorworks Architect software is produced by Nemetschek Vectorworks, Inc., a wholly owned subsidiary of the Nemetschek Group, a leading global software provider for the architecture, engineering, and construction market (AEC). Nemetschek Vectorworks software solutions are used by design professionals in 85 countries and translated into 10 languages.

With Vectorworks Architect 2013, the tradition continues.



Nemetschek Vectorworks, Inc.
7150 Riverwood Drive, Columbia, MD 21046-1295 USA
www.vectorworks.net
T 410-290-5114 | F 410-290-8050

©2012 Nemetschek Vectorworks, Inc. All rights reserved.
Vectorworks and Renderworks are registered trademarks of Nemetschek Vectorworks, Inc.
SmartCursor and VectorScript are trademarks of Nemetschek Vectorworks, Inc.
Parasolid is a registered trademark of Siemens Product Lifecycle Management Software, Inc.

System Recommendations

Mac OS X 10.6.8 or later
QuickTime
Intel Core 2, 2.0GHz or better
DVD-ROM drive (dual layer)

Windows XP SP 3
Windows Vista SP 2
Windows 7 SP 1
QuickTime 7.7.0 to 7.7.2 (higher versions not recommended)
Pentium 2GHz or better
DVD-ROM drive (dual layer)

RAM*

1GB minimum
4GB highly recommended
8GB recommended for large files and complex renderings

Graphics

1024x768 minimum
1280x800 recommended
512MB VRAM minimum, 1GB+ VRAM recommended for high-quality rendering

*Vectorworks 2012 and Vectorworks 2013 contained improvements that placed significantly higher demand on the graphics hardware. The performance and quality of the graphics provided by Accelerated Navigation and Improved OpenGL Shadows depend directly on the speed and memory of the graphics card. These new features have the potential to provide a very fast and fluid experience when used on capable hardware, and a noticeably slower experience when used on older or incompatible hardware. **In general, the more powerful your video card is, the better your Vectorworks experience will be.**

For the latest information on our video card recommendations for Vectorworks 2013, see the following Knowledgebase article: <http://kbase.vectorworks.net/questions/714>.

See www.vectorworks.net/sysreq/ for updated information.

