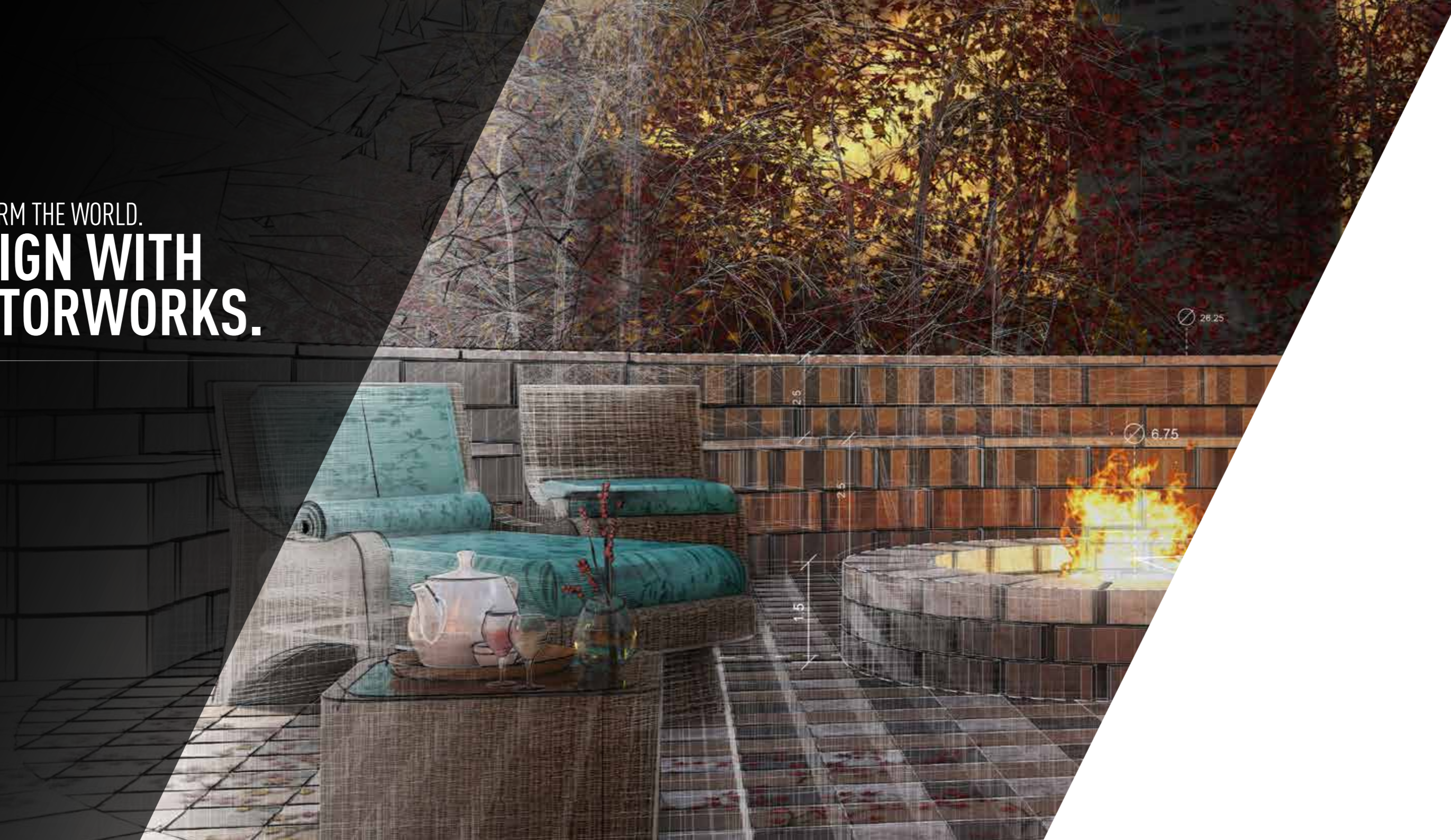




VECTORWORKS®
LANDMARK

TRANSFORM THE WORLD.
**DESIGN WITH
VECTORWORKS.**



Vectorworks® Landmark is the ultimate software solution for urban planners, landscape architects, and landscape designers. With creative solutions to streamline and automate everyday tasks alongside industry-leading irrigation tools that will enhance your design process, Landmark allows you to go from 2D drawings to stunning 3D renderings to finalized construction documents from a single, dynamic platform.

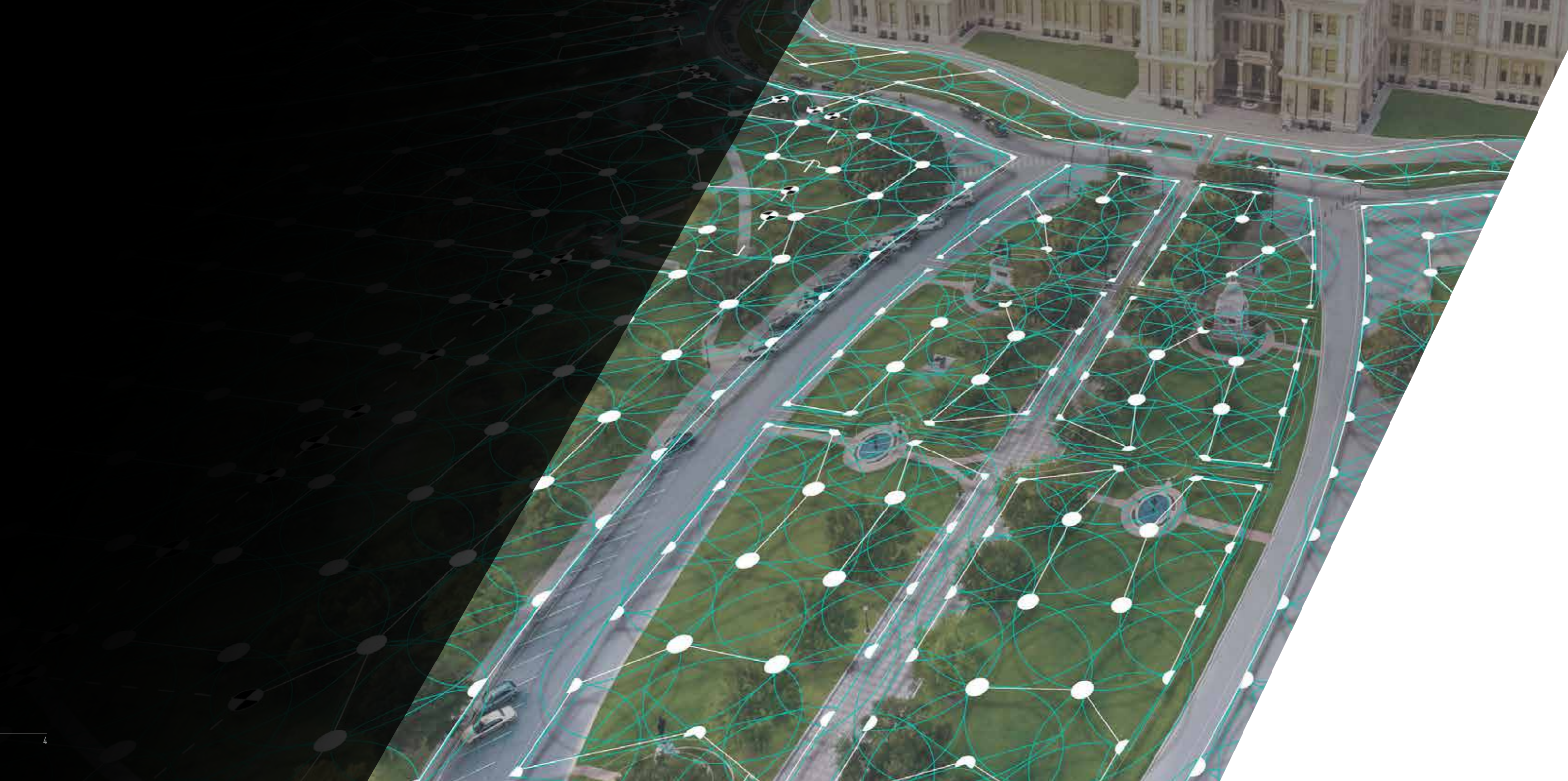
COVER IMAGE COURTESY OF MCGREGOR COXALL.

FULL RANGE OF **PROJECTS**

Vectorworks Landmark provides a flexible design environment that allows you to work on any type of project. With tools that easily scale up or down to accommodate your work, you can design residential plans at a 1:10 scale or regional master plans at 1:1,000 or larger.



IMAGE COURTESY OF MORRIS.



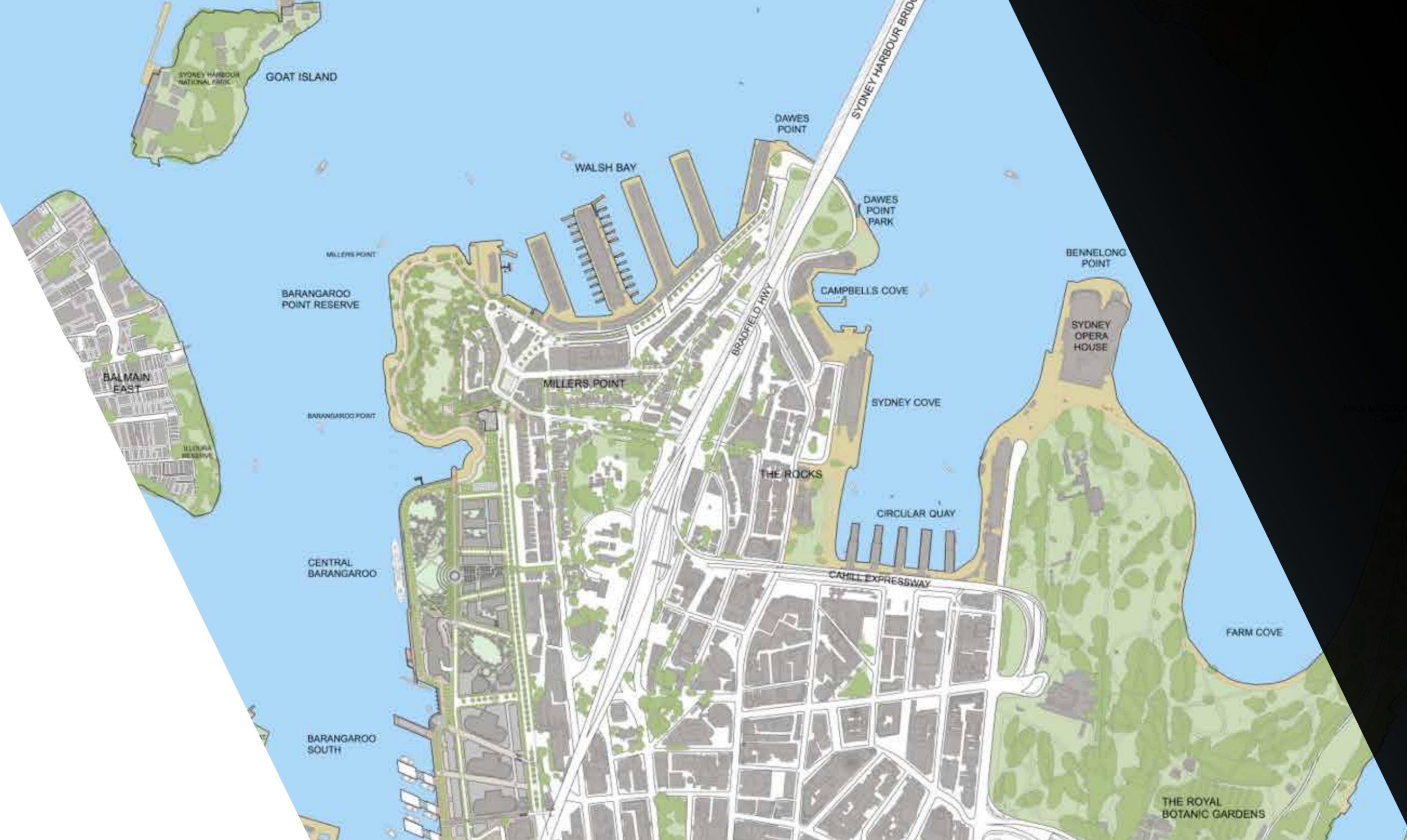
INNOVATIVE IRRIGATION DESIGN

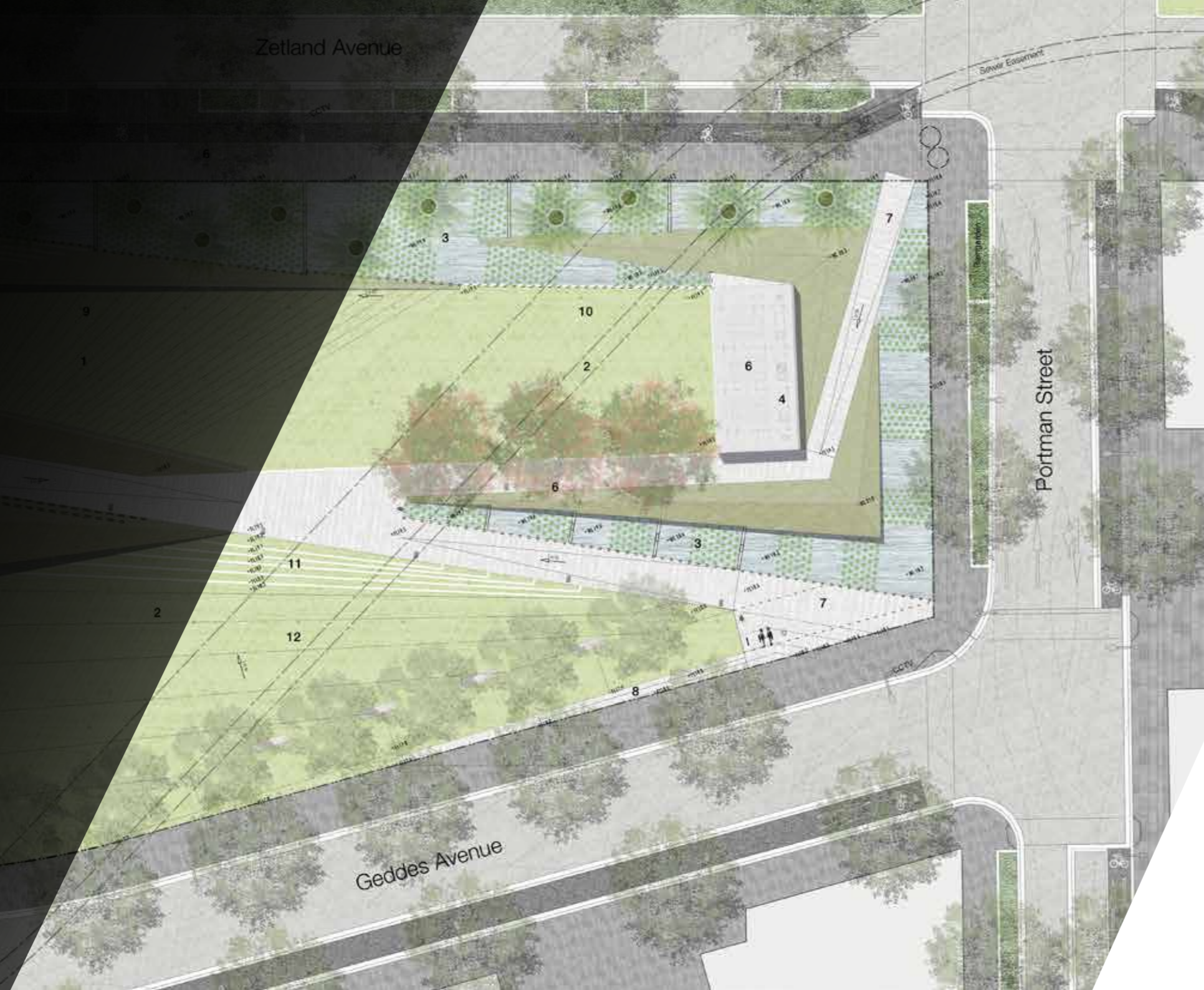
Planning for a site's irrigation involves considerations and calculations related to both its physical features and resource availability. Vectorworks Landmark software meets all of these needs with innovative irrigation design tools.

Create zones of similar watering needs with the Hydrozone tool. Then use built-in worksheets to analyze for water efficiency, which makes satisfying a site's water budget allowance easier than ever. Whether specifying lateral and main piping, sprinkler heads, drip systems, valves, controllers, or other system components, the automated and manual placement methods are designed to meet industry standards while giving professionals the flexibility to design, document, and estimate proposed and as-built systems efficiently.

INTEGRATED MAPPING AND GIS

Incorporate maps into your work with ease. Add survey data to your drawing and use it as the basis of your digital terrain model, or import CAD drawings and data-rich BIM models from architects, builders, or engineers to use as base plans or models. Import geo-referenced aerial/satellite images and Geographic Information System (GIS) data files from federal, city, state, or other agencies to explore all of your design options.





- Existing Boundary (As-built) Zone 1 to be established by owner
- Proposed Centre Line
- Existing Contour Line
- Finished Level
- Water Level
- Proposed Fall
- Architecture Structures
- CCTV
- Water and Power Outlet
- Preparation - Groundworks
- Stormwater & Sewer Catchment
- Drainage - Water Pump
- Drainage - Trench Drain
- Walls + Edges
- Precast Concrete Edge
- Wall wall
- Retaining Wall Under
- Retaining Wall with Coll
- Pavements
- Ram Paved
- Existing Road
- Proposed CoB
- Proposed Co
- Proposed F
- Proposed
- Water Elements
- Aquifer
- Furniture + Fix
- F

MULTI-USER ENVIRONMENT

Collaborate and maximize efficiency. Project sharing provides customizable multi-user workflows, allowing your project team to work on the same Vectorworks file concurrently. It also frees designers to work anywhere, any time with cloud integration that allows you to save your files in your Box, Dropbox, OneDrive, and Google Drive™ accounts.

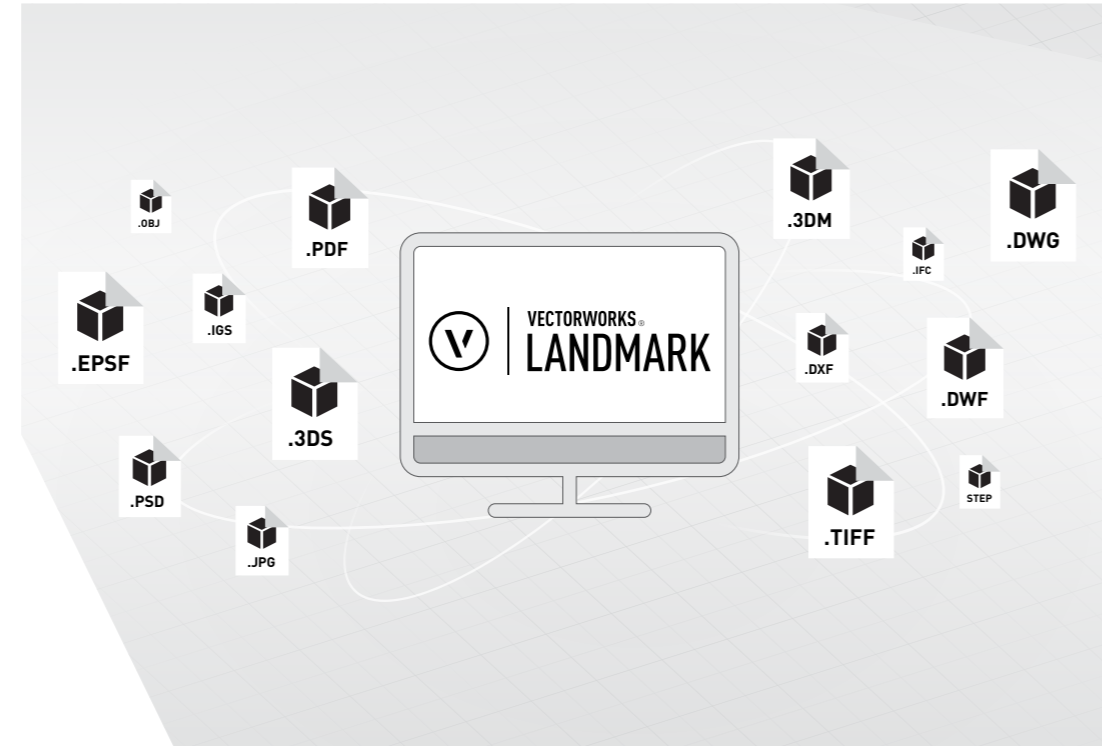
IMAGE COURTESY OF MCGREGOR COXALL.



SEAMLESS INTEROPERABILITY

Exchange NURBS models with Rhino or import concept models from SketchUp®. Support of both import and export of OBJ, STL, and 3DS file formats lets you explore the full range of design options by incorporating information from multiple sources, making sweeping changes quickly and easily.

Using IFC, an industry-standard BIM file format, communicate effectively with your consultants and collaborators who may be using Revit® or other BIM software. Vectorworks Landmark supports IFC, 3DS, DWG/DXF, and PDF file types for document and model exchange.



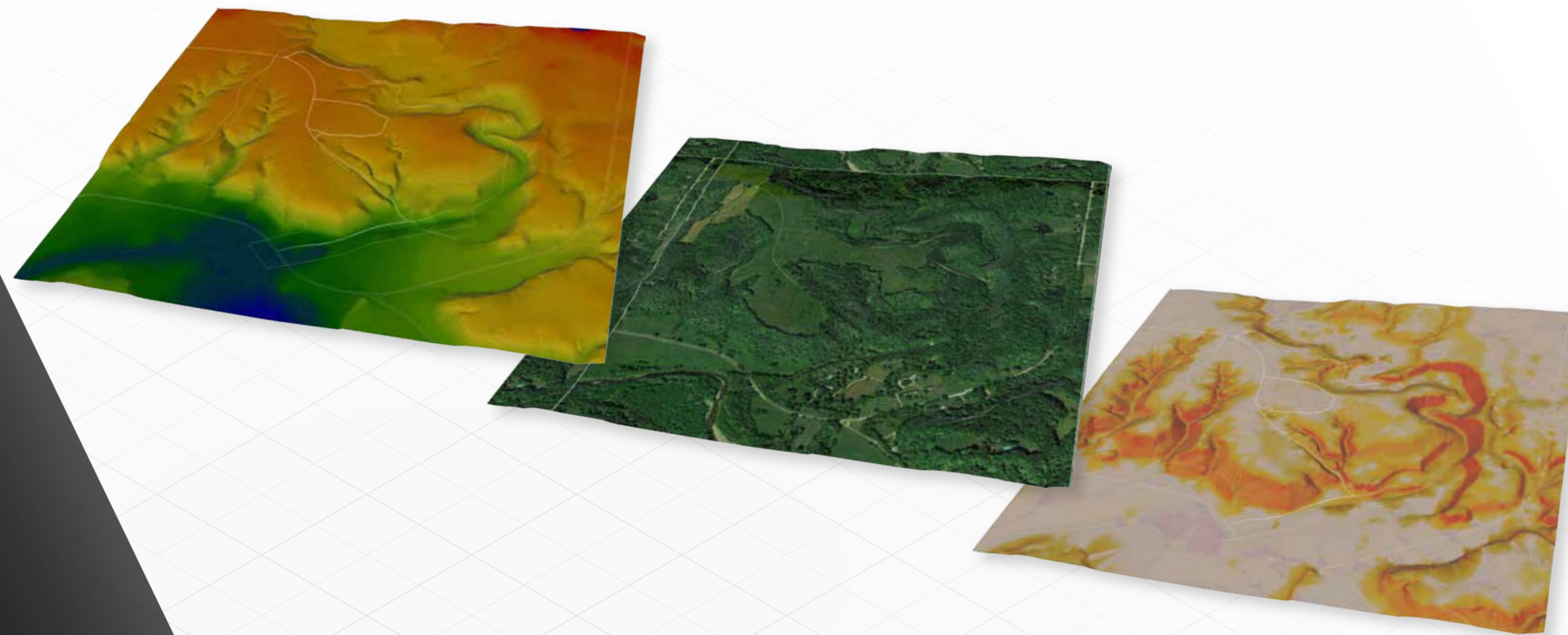
VECTORWORKS LANDMARK FILE IMPORT/EXPORT CAPABILITIES

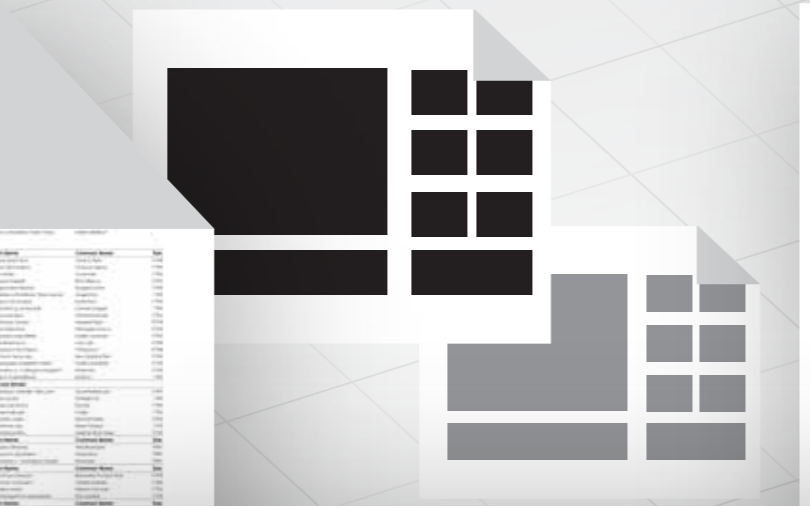
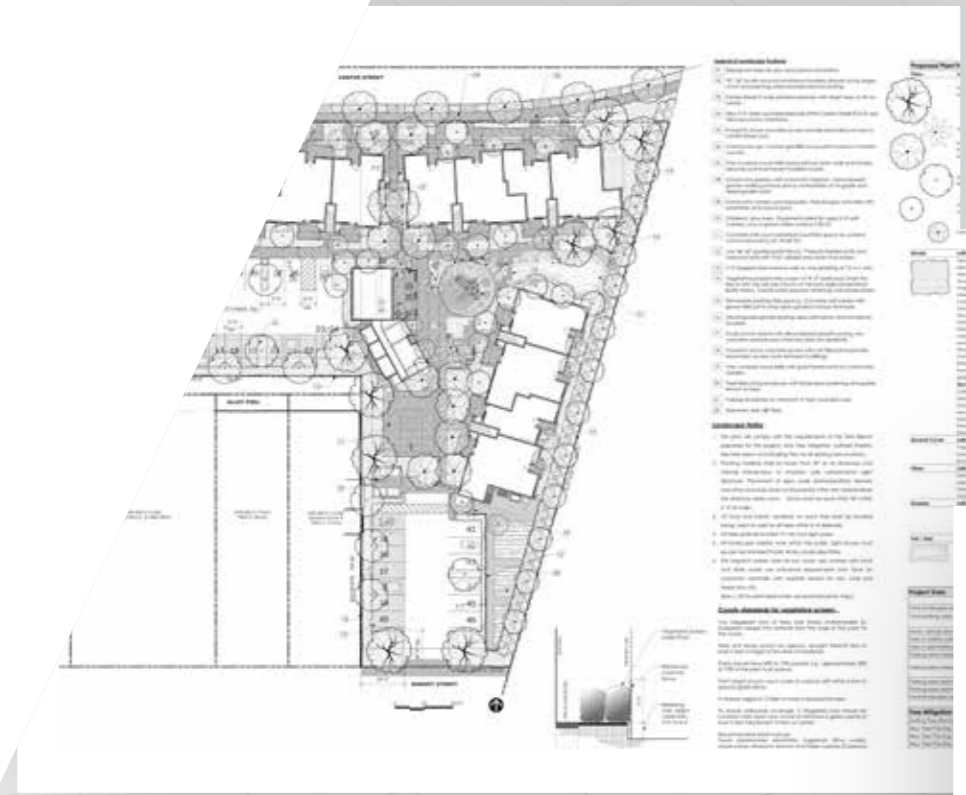
FILE TYPE	IMPORT	EXPORT	FILE TYPE	IMPORT	EXPORT	FILE TYPE	IMPORT	EXPORT
3D PDF		●	HDR/HDR1	●	●	Revit	●	
3DS	●	●	IFC <small>[Industry Foundation Classes]</small>	●	●	SAT	●	●
Cinema 4D (.c4d)		●	IGS/IGES	●	●	Script	●	●
C4D Textures	●		IMAGE FILES <small>(GIF, BMP, TIF, JPG, PNG)</small>	●	●	Shapefile	●	●
Collada		●	KML		●	SketchUp (.skp)	●	
Database	●	●	OBJ	●	●	STP/STEP	●	●
CSV	●	●	Parasolid X-T	●	●	STL	●	●
DWG/DXF/DWF	●	●	PDF	●	●	Web View		●
ECW	●		Point Cloud	●		Worksheet	●	●
FBX		●	Rhino (.3DM)	●	●			



DIGITAL TERRAIN MODELING/ANALYSIS

Use your Site Model (digital terrain model or DTM) to visualize and document the impact of your planned grading. With essential analysis features, such as slope analysis and surface drainage flow for existing or proposed conditions, make vital decisions about sustainable soil and water management practices, ensuring better landscape performance.





AUTOMATED REPORTING AND DATABASE SUPPORT

Stop manually counting plants, planting areas, hardscape areas, or other multiple site features in your drawings and models. Automatic data tracking does the tedious work for you; built-in database worksheets continually keep track as your designs evolve. Take advantage of the two-way link between database worksheets and objects, giving you the power to change object parameters directly from the worksheet.

The application goes further than automated schedules and quantity take-offs. It provides a user-defined, quick, and accurate way to assign custom data to any object and create unique reports for LEED and SITES® projects that require water budgets and stormwater runoff calculations.

IMAGES COURTESY OF PACIFIC COAST LAND DESIGN.



POWERFUL PRESENTATIONS

Vectorworks software provides you with a comprehensive "what you see is what you get" suite of design tools built to create stunning 2D presentations. Fine-tune line weights, adjust color opacity, and add drop shadows to produce stunning presentations — all from within Vectorworks Landmark's intuitive interface.

IMAGE COURTESY OF VAN ATTA ASSOCIATES.



scale: 3/32" = 1'- 0"



Material Legend

- SF Rima permeable colored concrete paving stone entry feature: color Moss/Charcoal blend
- Turfstone permeable concrete grid paving plated with native grasses @ fire truck lanes
- Stepstone Narrow Modular Paver



CONRAL HILTON FOUNDAT.

AGOURA HILLS, CALIF.

Drawing Title
Landscape Sections



Every day, landscape and irrigation design professionals choose **Vectorworks** because we deliver a solution that supports the entire process from concept to construction. From a single platform, you can design and document, integrating your site model into a building information model (BIM) while maintaining your creative edge.

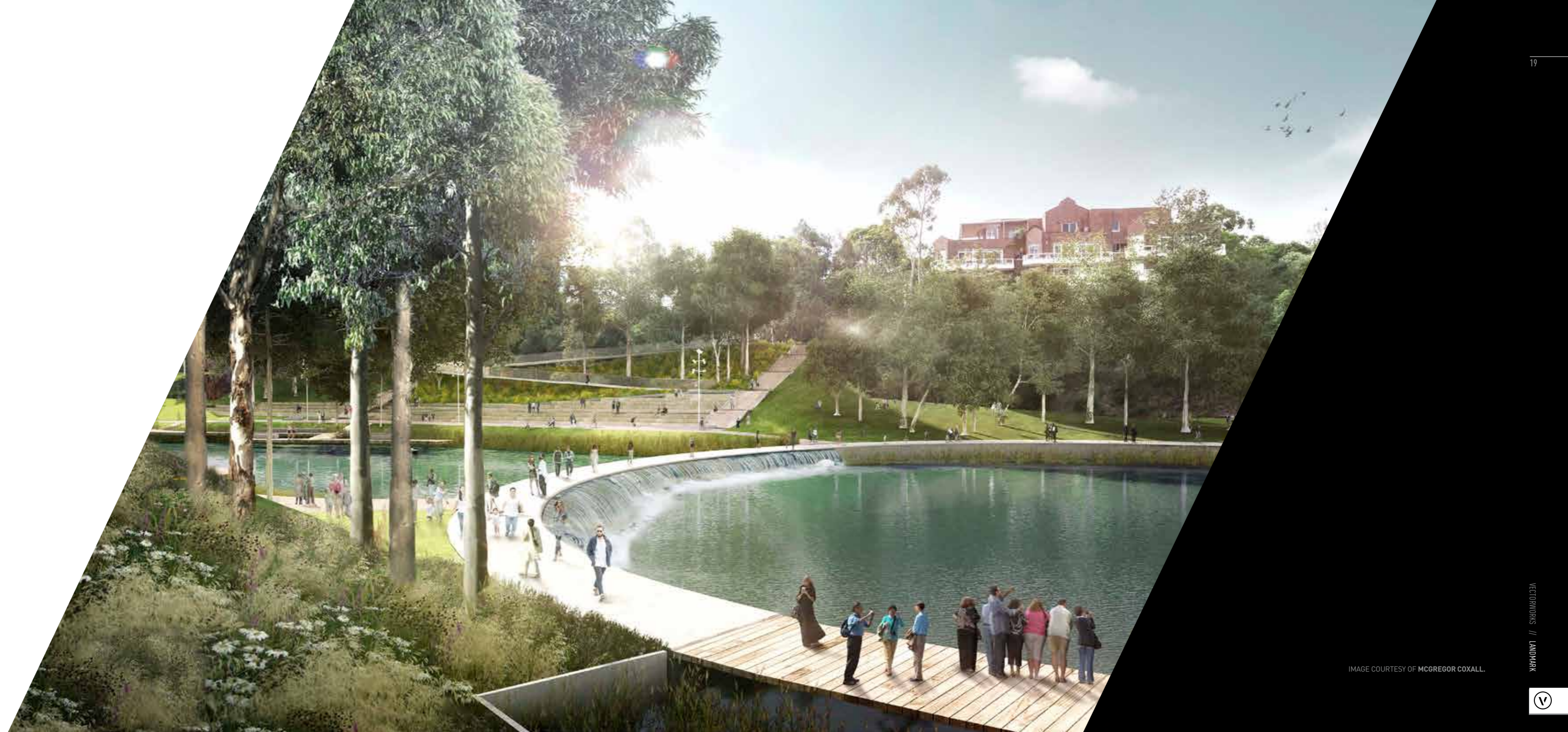


IMAGE COURTESY OF MCGREGOR COXALL.



SYSTEM RECOMMENDATIONS

Performance of Vectorworks may vary depending on several factors, including hardware configurations and project types.

To get a full list of minimum system requirements and recommended hardware profiles, please visit vectorworks.net/sysreq/

Mac OS 10.12 (Sierra)
Mac OS X 10.11 (El Capitan)
Mac OS X 10.10 (Yosemite)

Windows 10 64-bit
Windows 8.1 64-bit
Windows 8 64-bit
Windows 7 SP1 64-bit

PROCESSOR

- E** 64-bit Intel Core i5 (or AMD equivalent) or better
- M** 64-bit Intel Core i5 (or AMD equivalent) clocked at 2GHz or better
- H** 64-bit Intel Core i7 (or AMD equivalent) clocked at 3GHz or better

RAM

- E** 4GB or more
- M** 8GB-16GB or more
- H** 16GB-32GB or more

Key:

- E** Entry-level profile
- M** Mid-level profile
- H** High-end profile

GRAPHICS CARD

- E** OpenGL 2.1 compatible graphics card with 1GB of VRAM or more
- M** Dedicated OpenGL 2.1 compatible graphics card with 2GB-4GB of VRAM
- H** Dedicated OpenGL 2.1 compatible graphics card with 4GB of VRAM or more

SCREEN RESOLUTION

1920x1080 or higher recommended

NETWORK REQUIREMENTS FOR PROJECT SHARING

Project sharing requires high-speed network connections. As the network bandwidth increases, so does project sharing performance. Slower network speeds can still provide a satisfactory user experience if you minimize operations that transfer large amounts of data over the network (such as committing changes to the project file or refreshing a local working file).

ABOUT VECTORWORKS

Vectorworks cares about design. Since 1985, we have served the architecture, landscape, and entertainment industries, drawing inspiration from the world around us and encouraging the more than 650,000 designers who use our software to create experiences that transform the world.

Our commitment to develop the world's best cross-platform design software has taught us a simple truth: great design begins with the inspiration of the designer. Vectorworks supports that inspiration by guiding the exploration of discovery and finding creative solutions. We provide powerful tools to help designers capture ideas, nurture innovation, communicate effectively, and realize their vision.

VECTORWORKS, INC.

7150 Riverwood Drive, Columbia, MD 21046-1295 USA

vectorworks.net

T 410.290.5114

©2017 Vectorworks, Inc. All rights reserved.

Vectorworks is a registered trademarks of Vectorworks, Inc.