



VECTORWORKS®  
**ARCHITECT**

TRANSFORM THE WORLD.  
**DESIGN WITH  
VECTORWORKS.**

---



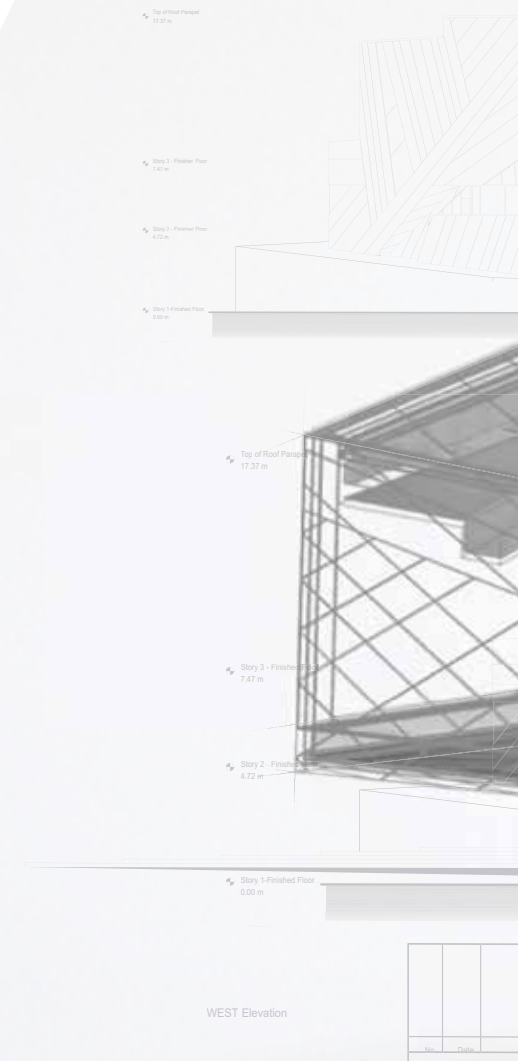


Designers choose **Vectorworks® Architect** software because they want a solution that supports their creative process instead of replacing it. Vectorworks Architect delivers an exciting suite of capabilities that will enhance your workflows and improve your design process. From 2D and 3D to BIM and beyond, Vectorworks Architect supports you and your project team from concept to construction seamlessly.

DESIGN BY ALLIED WORKS ARCHITECTURE.  
IMAGE COURTESY OF THE NATIONAL VETERANS MEMORIAL & MUSEUM AND MIR.  
COVER IMAGE COURTESY OF CAIQUE NIEMEYER.

# THE ARCHITECT'S BIM TOOL

With Vectorworks Architect, you can create building information models without changing your preferred design process. Whether you're looking to streamline costs, analyze materials, increase your energy efficiency, or continue creating world-class designs, our software provides an efficient way to maximize your BIM capabilities.





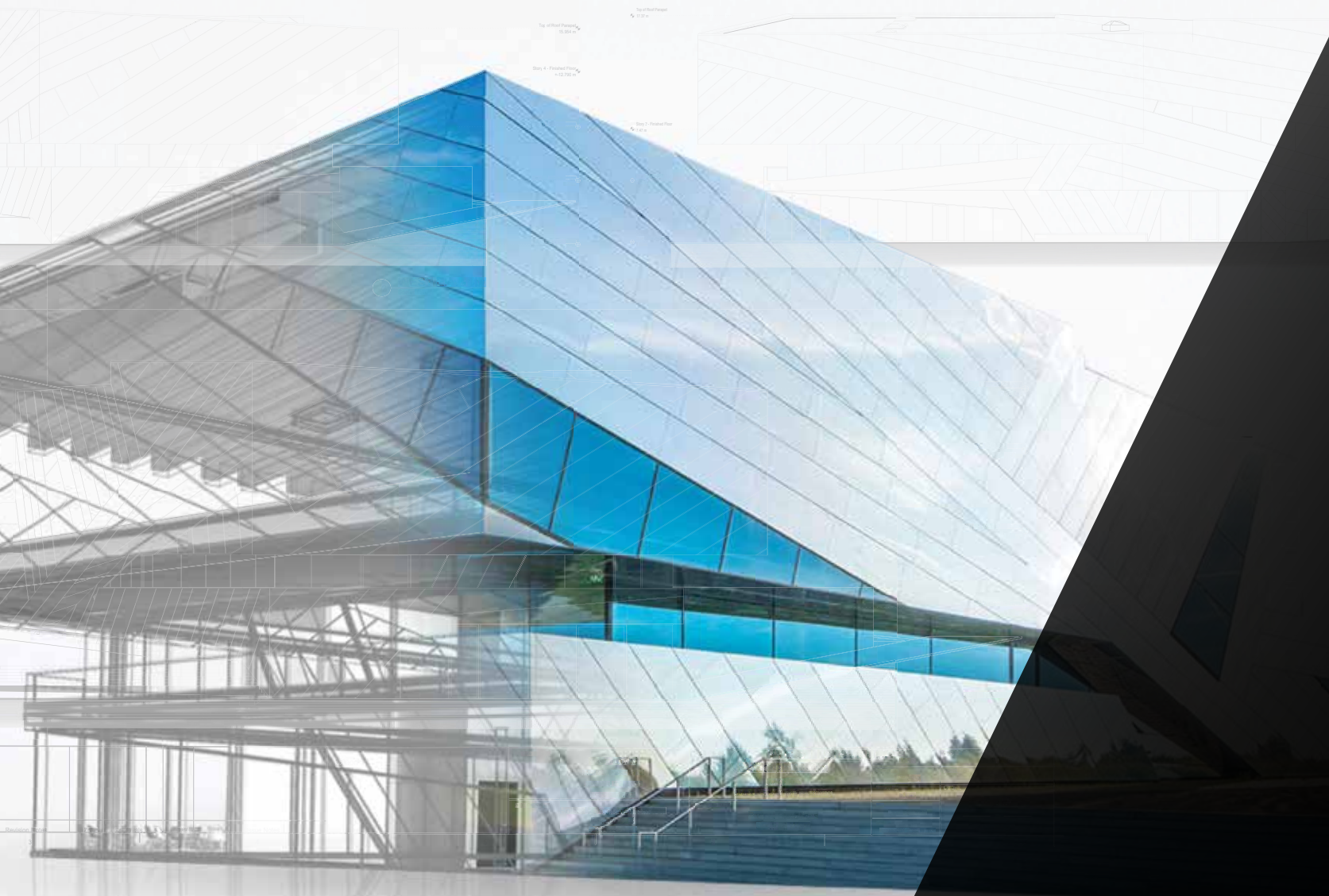


IMAGE INSPIRED BY HOLZER KOBLER ARCHITEKTUREN.



# CREATIVE MODELING SOLUTIONS

Design without limitations. Our first-in-industry, cross-platform graphical scripting capabilities, known as Marionette, offer new ways to explore any form and function. Vectorworks Architect also equips you with SmartCursor™ technology that gives you hints to design more accurately, as well as subdivision surface modeling tools that transform primitive shapes into smooth, malleable surfaces so you can craft sculpted objects, unique furniture, and more.

IMAGE COURTESY OF HAMONIC + MASSON & ASSOCIÉS.





# COLLABORATIVE **PROJECT SHARING**

---

Seeking new ways to collaborate and maximize efficiency? Project sharing enables architects and interior designers to unify their workflows by allowing your project team to work on the same Vectorworks file concurrently. Streamline your journey from simple sketch to final product.



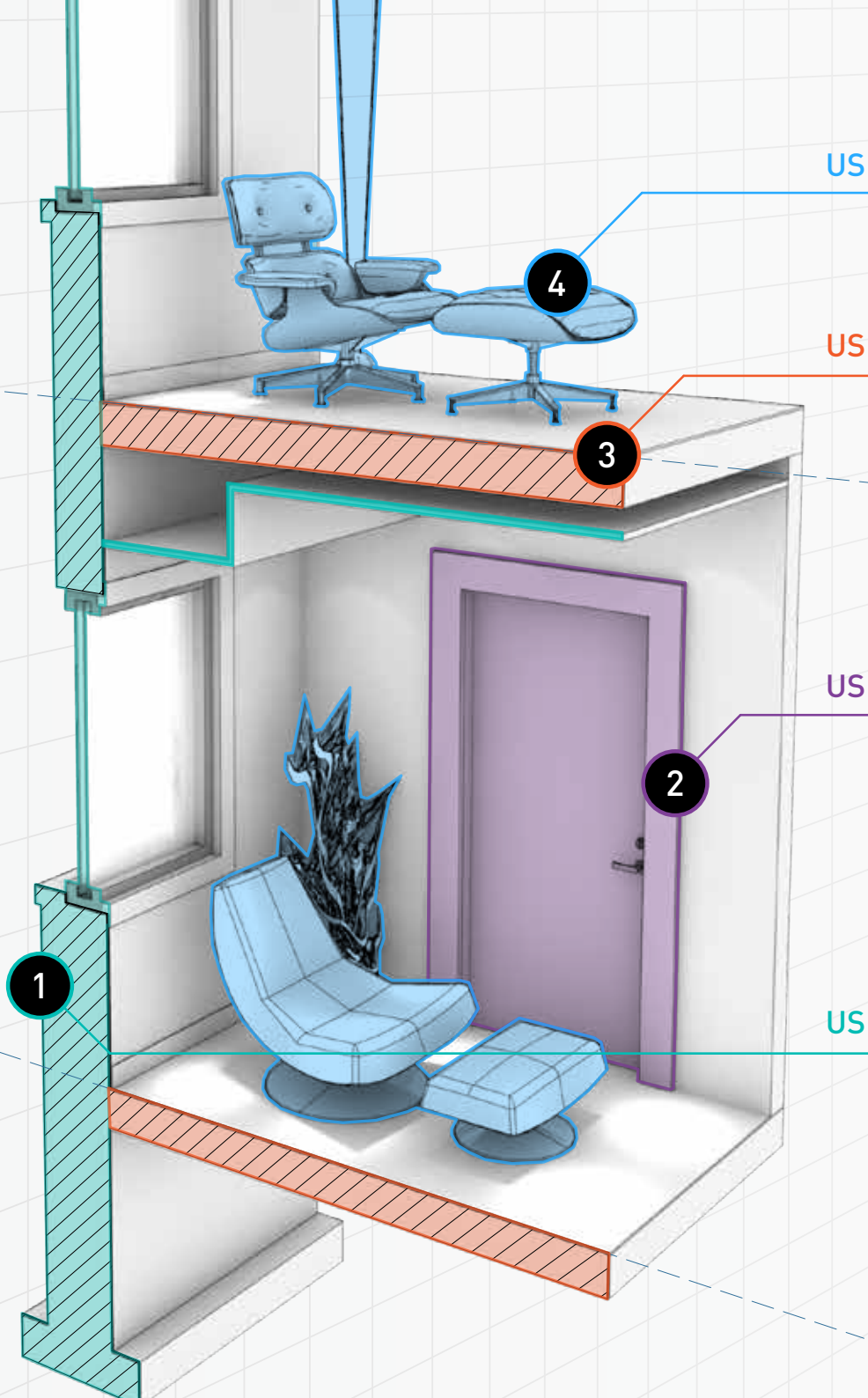


USER 4: FURNITURE

USER 3: SLAB SYSTEM

USER 2: DOORS

USER 1: WALLS

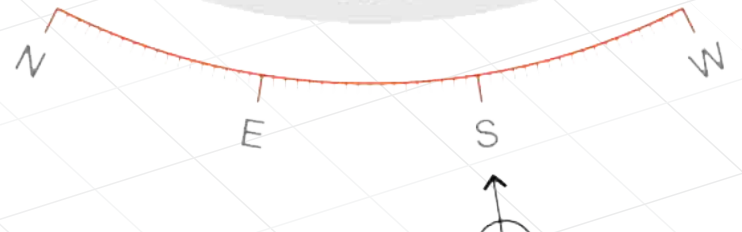


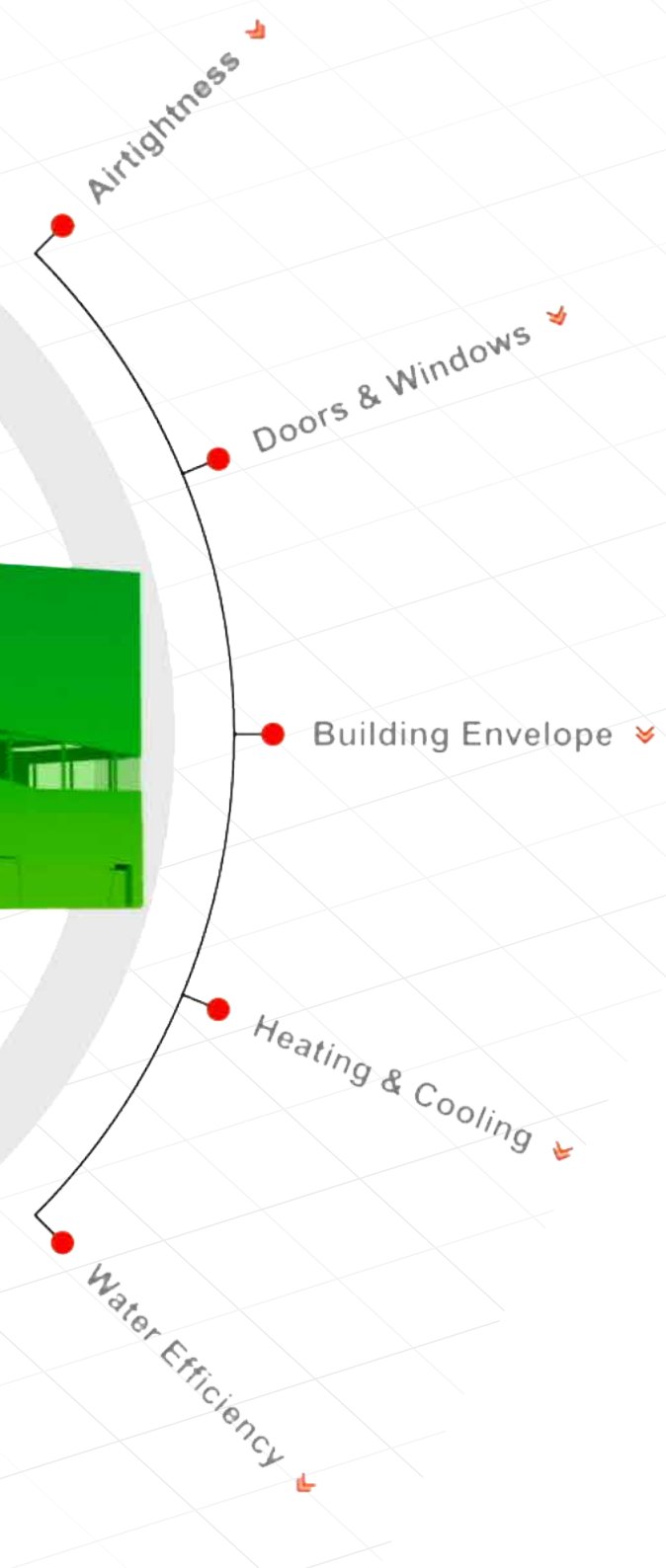
Area: 4,090 square meters  
Volume: 261,568 cubic meters



ENERGY RATING | **A<sup>++</sup>**

ORIENTATION & SHADING



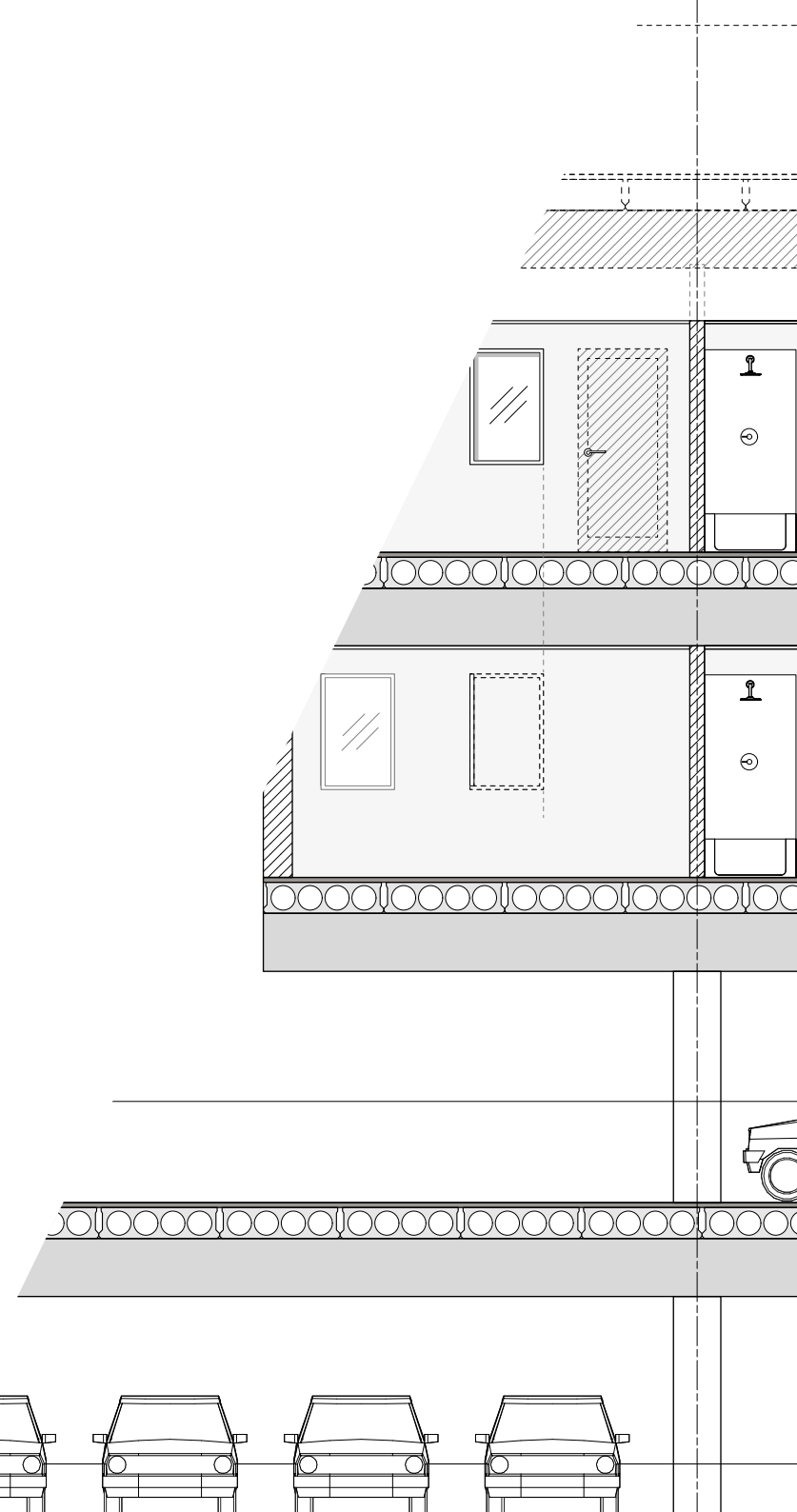


## RESPONSIVE ENERGY TOOLS

The Vectorworks Energos feature enables you to make sustainability a priority throughout the design process. Based on the Passivhaus calculation method, the Energos module gives you — and your clients — a dynamic, intelligent gauge of a building's energy performance that you can adjust in real time.

# SUPERIOR DOCUMENTATION

Vectorworks Architect empowers you to design without constraints. With a broader array of design tools than any other software, you will produce stunning architecture while generating all of your required documentation. Use your BIM model to create and refine custom schedules and construction documents directly from your model, supporting you as you make changes throughout your iterative design process.



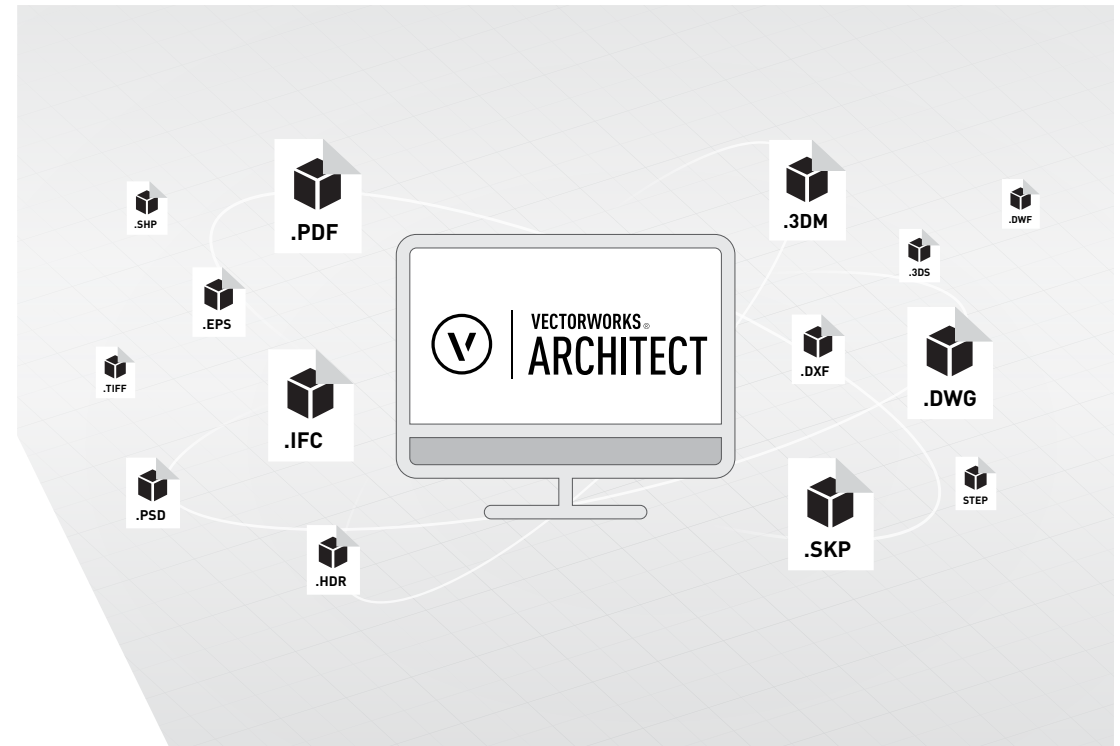




# SEAMLESS INTEROPERABILITY

Vectorworks Architect's extensive support for alternative file formats makes it easy to work seamlessly between programs. Exchange NURBS models with Rhino or import concept models from SketchUp®. Support of both import and export of OBJ, STL, and 3DS file formats lets you explore the full range of design options by incorporating information from multiple sources, making sweeping changes quickly and easily.

Using IFC, an industry-standard file format, communicate effectively with your consultants and collaborators who may be using Revit® or other BIM software — or use your model for clash detection and model checking. Vectorworks Architect supports IFC, gbXML, DWG/DXF, Revit, PDF, and more for document and model exchange.



## VECTORWORKS ARCHITECT FILE IMPORT/EXPORT CAPABILITIES

FILE TYPE	IMPORT	EXPORT	FILE TYPE	IMPORT	EXPORT	FILE TYPE	IMPORT	EXPORT
3D PDF		●	gbXML		●	PDF	●	●
3DS	●	●	GIS shapefile (.SHP)	●	●	PDF/A	●	●
BCF	●	●	HDR/HDRI	●	●	Photoshop (.PSD)	●	●
Cinema 4D (.C4D)		●	IFC (Industry Foundation Classes)	●	●	Point Cloud	●	
C4D Textures	●		IGS/IGES	●	●	Python Script	●	●
Collada		●	Illustrator (.EPS/.EPSF)	●	●	Rhino (.3DM)	●	●
Database	●	●	IMAGE FILES (GIF, BMP, TIF, JPG, PNG)	●	●	Revit	●	
CSV	●	●	KML		●	SAT	●	●
DWG/DXF/DWF	●	●	MOV		●	SketchUp (.SKP)	●	
ECW	●		OBJ	●	●	STP/STEP	●	●
FBX		●	Parasolid X-T	●	●	STL	●	●
						Web View		●

# POINT CLOUD

## SUPPORT

---

Replace field surveys with integrated point cloud support. Using your preferred 3D scanning device, you can capture any physical location and import a 3D point cloud object to Vectorworks Architect using PTS, E57, LAS, LAZ, and XYZ file formats. Once you've documented existing conditions, you can model and measure, creating entirely new structures or renovating existing architecture.

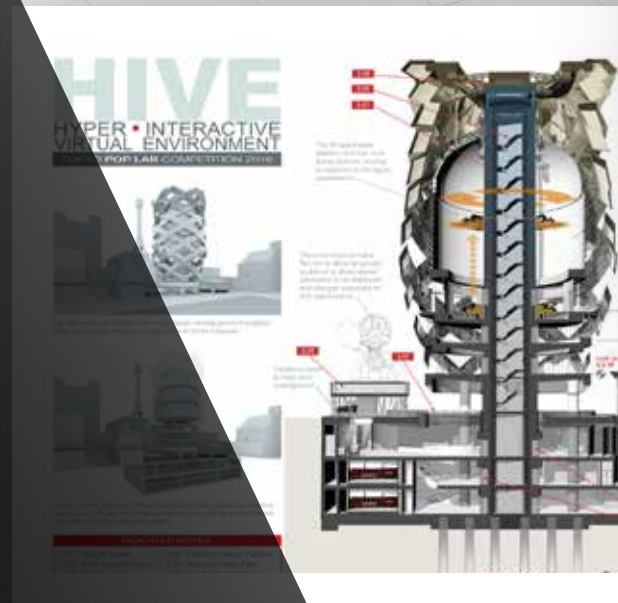






# POWERFUL PRESENTATIONS

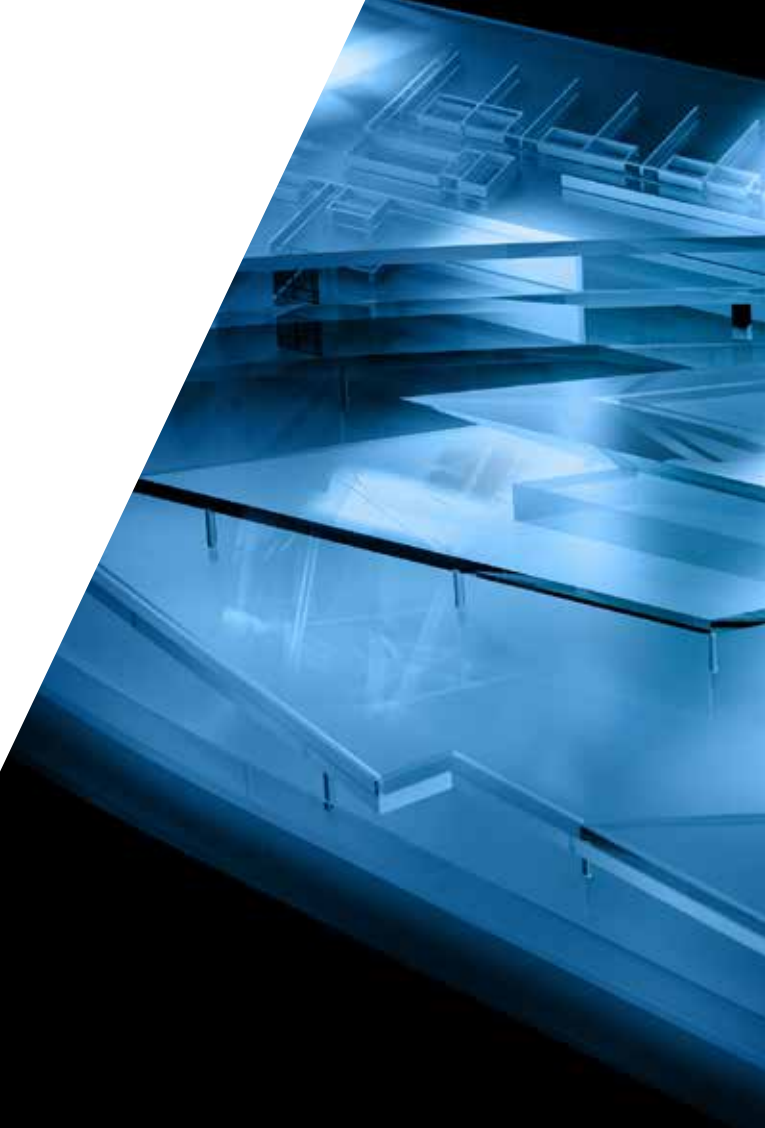
Vectorworks Architect equips you to develop compelling client presentations that highlight your skills, build your brand, and grow your business. Featuring best-in-industry 2D and 3D graphics and the integrated capabilities of Renderworks®, powered by MAXON CineRender, you can design, document, and communicate with your customers from a single platform.







From the first flicker of inspiration to the finished product, Vectorworks design software takes you from sketch to BIM and beyond, helping you transform the world.





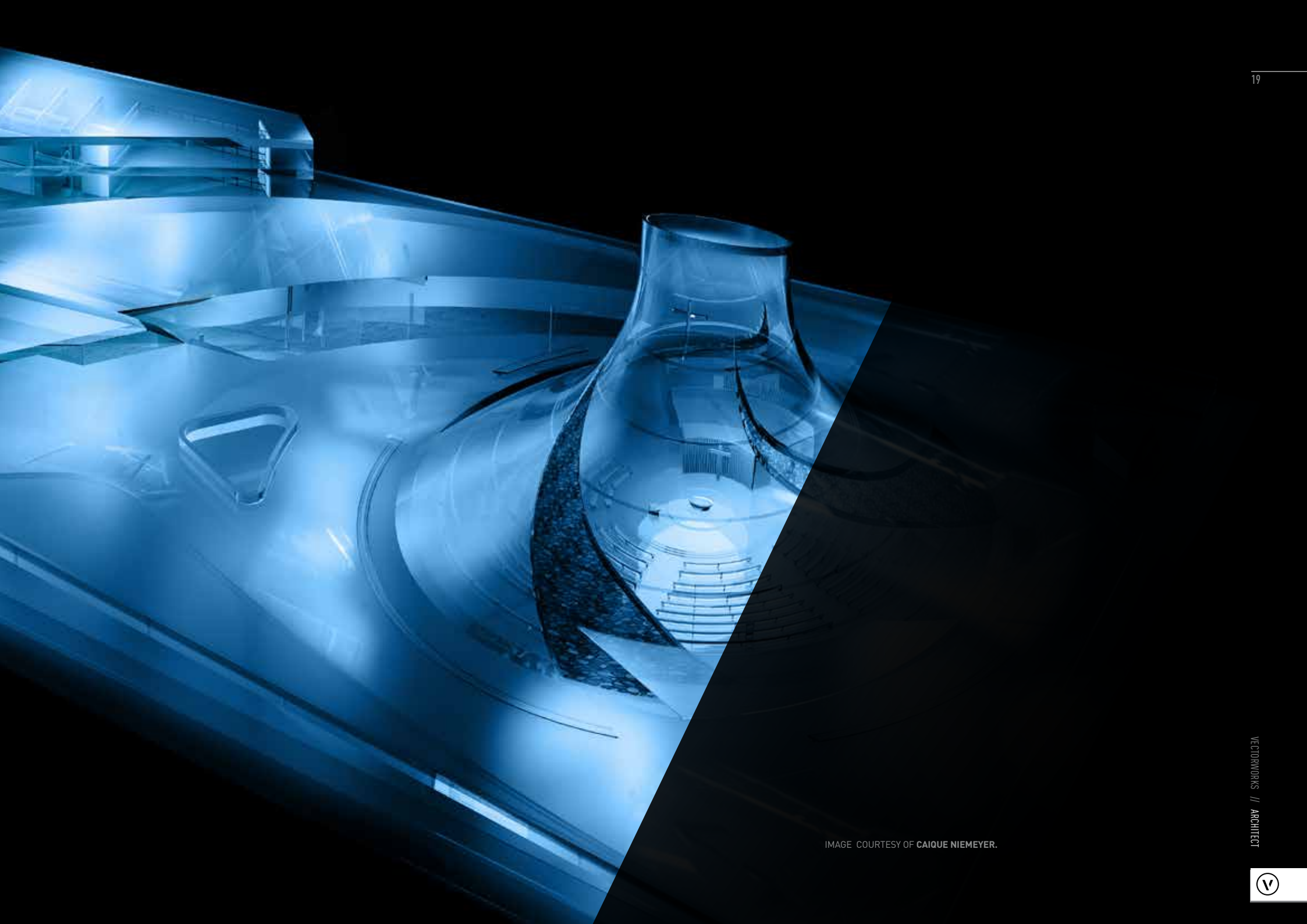


IMAGE COURTESY OF CAIQUE NIEMEYER.

# SYSTEM RECOMMENDATIONS

---

Performance of Vectorworks and Vision may vary depending on several factors, including hardware configurations and project types.

To get a full list of minimum system requirements and recommended hardware profiles, please visit [vectorworks.net/sysreq/](http://vectorworks.net/sysreq/)

Mac OS 10.12 (Sierra)  
Mac OS X 10.11 (El Capitan)  
Mac OS X 10.10 (Yosemite)

Windows 10 64-bit  
Windows 8.1 64-bit  
Windows 8 64-bit  
Windows 7 SP1 64-bit

## PROCESSOR

- E** 64-bit Intel Core i5 (or AMD equivalent) or better
- M** 64-bit Intel Core i5 (or AMD equivalent) clocked at 2GHz or better
- H** 64-bit Intel Core i7 (or AMD equivalent) clocked at 3GHz or better

## RAM

- E** 4GB or more
- M** 8GB-16GB or more
- H** 16GB-32GB or more

## Key:

- 
- E** Entry-level profile
  - M** Mid-level profile
  - H** High-end profile
  - V** Vision profile

## GRAPHICS CARD

- E** OpenGL 2.1 compatible graphics card with 1GB of VRAM or more
- M** Dedicated OpenGL 2.1 compatible graphics card with 2GB-4GB of VRAM
- H** Dedicated OpenGL 2.1 compatible graphics card with 4GB of VRAM or more
- V** Dedicated OpenGL 3.0 compatible graphics card with 4GB of VRAM or more

## SCREEN RESOLUTION

1920x1080 or higher recommended

## NETWORK REQUIREMENTS FOR PROJECT SHARING

Project sharing requires high-speed network connections. As the network bandwidth increases, so does project sharing performance. Slower network speeds can still provide a satisfactory user experience if you minimize operations that transfer large amounts of data over the network (such as committing changes to the project file or refreshing a local working file).



# ABOUT **VECTORWORKS**

---

Vectorworks cares about design. Since 1985, we have served the architecture, landscape, and entertainment industries, drawing inspiration from the world around us and encouraging the more than 650,000 designers who use our software to create experiences that transform the world.

Our commitment to develop the world's best cross-platform design software has taught us a simple truth: great design begins with the inspiration of the designer. Vectorworks supports that inspiration by guiding the exploration of discovery and finding creative solutions. We provide powerful tools to help designers capture ideas, nurture innovation, communicate effectively, and realize their vision.

**VECTORWORKS, INC.**

7150 Riverwood Drive, Columbia, MD 21046-1295 USA

**[vectorworks.net](http://vectorworks.net)**

T 410.290.5114

©2017 Vectorworks, Inc. All rights reserved.

Vectorworks and Renderworks are registered trademarks of Vectorworks, Inc. Vision is a product of Vectorworks, Inc.