



archoncad
making VectorWorks easy!

Vector-workout™ Guide to Productivity 2010

Vectorworks is extremely powerful when you use it correctly. There are many, many productivity techniques you can use to make Vectorworks faster. That is what this kit is about, editing Vectorworks and making it work faster for you.

For more information, click on my picture, and I will introduce you to this kit and show you how to get more productive.

Please ensure you open this guide using Adobe Acrobat Reader, version 8 or better.



Guide to Productivity for Vectorworks 2010

Contents

Vector-workout™ Guide to Productivity 2010.....	1
Productivity Techniques	8
Draw With Objects	8
2D Selection tool	9
Tool Bar Shortcuts	10
Drag A Copy	11
Add Surface/Clip Surface.....	12
Use The Right Mouse Button.....	13
Zoom With the Scroll Wheel.....	14
2D Reshape Tool.....	15
Eye Dropper	16
Objects From Polyline.....	17
Align/Distribute.....	18
Set Your Preferences	19
Set the Tool Preferences.....	20
Create a Template	21
Navigation Palette	22
Use Layers And Classes	23
Customise VectorWorks To Make It Faster.....	24
Use Symbols, not Groups.....	25
Rotate Plan	26
Snapping Palette.....	27
Where is the Snapping Palette?	27
Snap to Grid	28
Snap To Object	29
Constrain Angle	30
Snap to Intersection	31
Smart Points.....	32
Snap To Distance.....	33
Smart Edge	34
Constrain Tangent.....	35

Object Info Palette	36
Shape	36
Data	37
Resource Browser	38
Attaching a Library to the Browser	39
Graphics	40
Graphic Attributes	40
Hatches.....	41
Applying Hatches.....	42
Creating Hatches	43
Images	44
Applying Images	45
Creating Images.....	46
Gradients	47
Applying Gradients	48
Creating Gradients.....	49
Attribute/Mapping tool.....	50
Object Opacity	51
Layers and Classes	52
Use More Classes, Use Fewer Layers	52
Creating a Layer and Class Standard.....	53
Storing a Layer and Class Standard.....	54
Property Line Tool	55
Drawing Simple Site Plans	55
Creating a Site Plan From a Polygon	56
Property Line to Draw One Line.....	57

Importing and Exporting Files	58
Importing DXF Files	58
Exporting DXF File From a Design Layer	59
Exporting DXF File From a Sheet Layer	60
Importing Shape Files	61
Importing Sketchup Files	62
Using 3D Points - 3D Loci	64
Edit The Extent of a Site Model	65
DTM From Text File	66
Site Model From a Survey and 3D Points	67
Edit the Extent of the Site Model	68
Site Modifiers	69
Roads	70
Pads and Boundaries	71
Cut and Fill Calculations	72
Hardscape	73
Stake Object	74
Dealing With Walls	75
Joining Walls	76
Joining Wall Components	77
Auto-Join Walls	78
Healing Walls	79
Reshaping Walls in 3D	81
Changing The Height At The End Of A Wall	82
Changing the Overall Height of a Wall	83
Fit Walls to Roof	84
Creating Wall Styles	85
Wall Style Library	86
Wall Sculpting - Wall Recess	88
Wall Sculpting - Wall Projection	89

Dealing With Roofs	90
Creating Roofs	90
Gable Roof	91
Split Gable	92
One Gable	93
Mono Pitch Roof.....	94
Inserting a Dormer Window	95
Inserting a Skylight.....	96
Cut Out in a Standard Roof	97
Roof Accessories	98
When You Can't Edit The Roof Enough	99
Creating Roof Face by Angle	100
Creating a Roof Face by Rise Over Run.....	101
Creating a Roof Face - Peak Height Above Axis	102
Curved Roofs.....	104
Flat Roofs.....	105
Creating a Complex Roof Using a Standard Roof.....	106
2 Storey Roof - Roof for Lower Floor	107
2 Storey Roof - Roof for Upper Floor	108
2 Storey Roof - Fixing Roof issues	109
Vertical Transport	110
Stair Tool - Straight Stair	110
Stair Tool - Straight Stair with Landing	111
Stair Tool - Stair with Landing - L Stair.....	112
Stair Tool - Stair with Winders	113
Stair Tool Library.....	114
Custom Stair - Straight Stair	115
Custom Stair - Straight Stair with Landing	116
Custom Stair - Stair with Landing - L Stair.....	117

Custom Stair - Stair with Winders	118
Custom Stair Library	119
Unusual Stairs	120
Ramps	121
Escalators	122
Annotation	123
Creating Text	123
Editing text	124
Checking Spelling	125
Find/Replace Text	126
Associative Dimensions	127
Interactive Dimensions	128
Constrained Dimensions	129
Unconstrained Dimensions	130
Circular Dimensions	131
Angular Dimensions	132
Moving Dimension Lines	133
Changing the Dimension Standard	134
Creating Your Own Dimension Standard	135
Drawing Label	136
Reference Marker	137
Section-Elevation Marker	138
Elevation Benchmark	139
Callout Tool	140
Callout Tool With Text From a Database	141
Callout Tool, Place as Keynote	142
Edit Keynote Legend	143
Callout Tool, Place as Keynote, With More than One Legend	144
Callout Tool, Creating a New Note Database	145
Callout Tool, Editing the Note Database	146
Sheet Border	147
Customise The Sheet Border	148

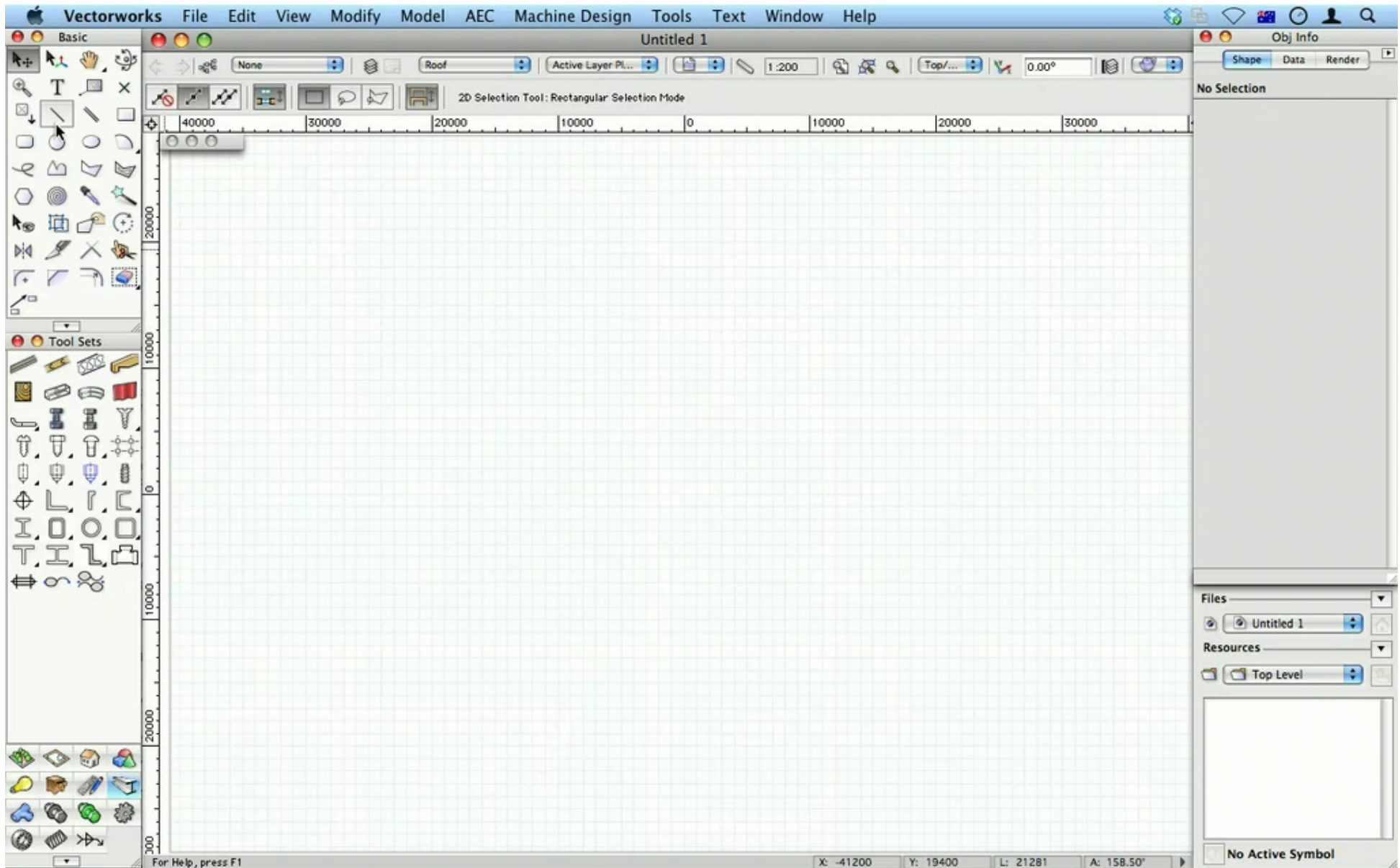
Floors, Columns and Pillars	149
Floors	149
Editing Floors	150
Pillars	151
Using Pillars to Join Tricky walls.....	152
Viewing	153
Zooming.....	153
Rotated Plan View.....	154
Saved Views.....	155
Building a Symbol Library	156
Creating a Symbol	156
Editing a Symbol	157
Building a Symbol Library	158
Customising Vectorworks	159
Workspaces - Menus.....	159
Workspaces - Tool Palettes	160
Viewports	161
Creating Sheet Layer Viewports	161
Right Mouse Click to Edit.....	163
Edit Viewport Crop	164
Viewport Cache.....	165
Copy and Rename Viewports.....	166
Change Viewport Scale	167
Viewport Class Overrides.....	168

Productivity Techniques

Draw With Objects

If you draw with objects (rectangles, polygons circles and so on) you will be quicker.

Click on the image below to play the movie.

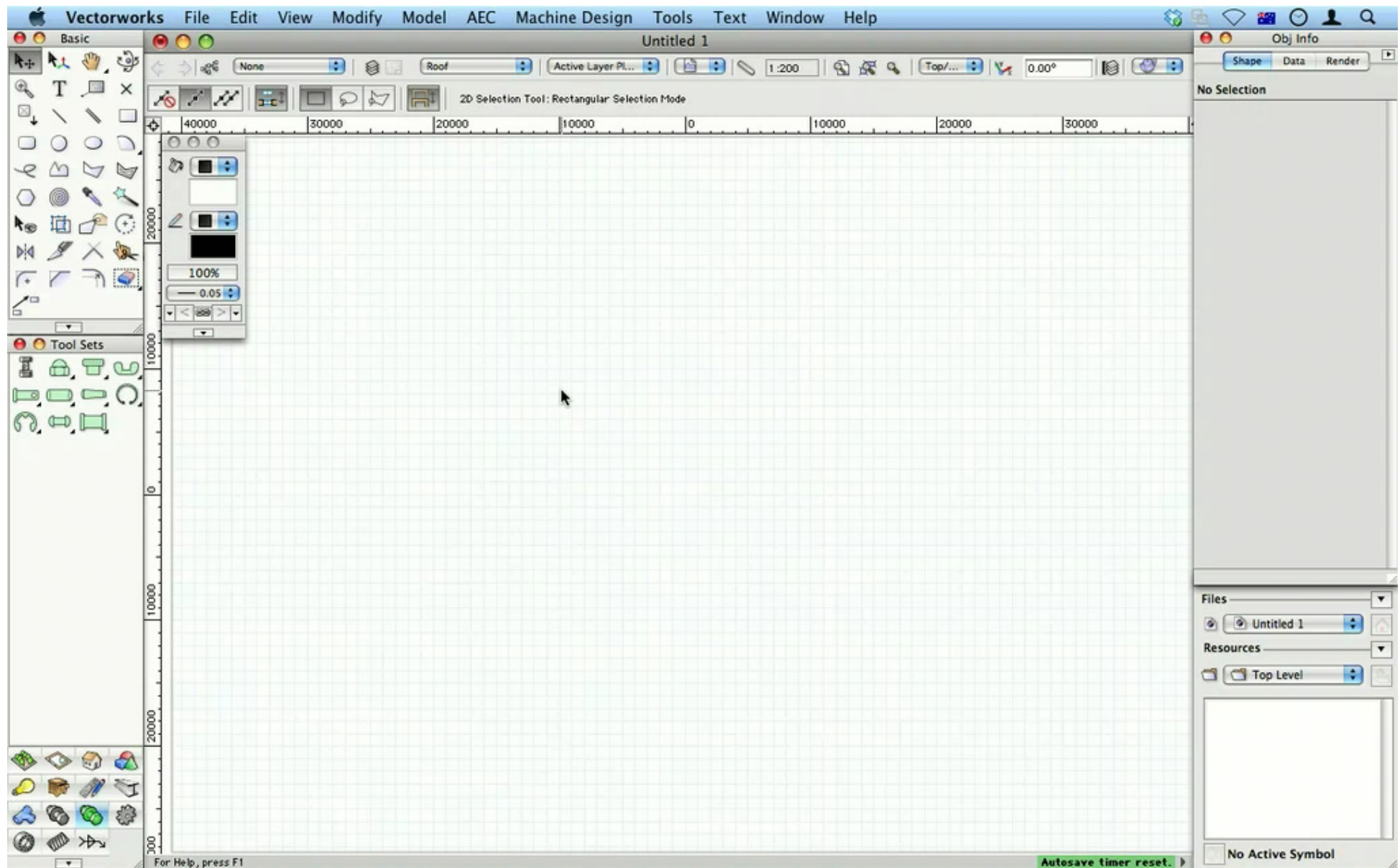


Snapping Palette

Where is the Snapping Palette?

The snapping palette is useful, so open it and try to keep it open.

Click on the image below to play the movie.

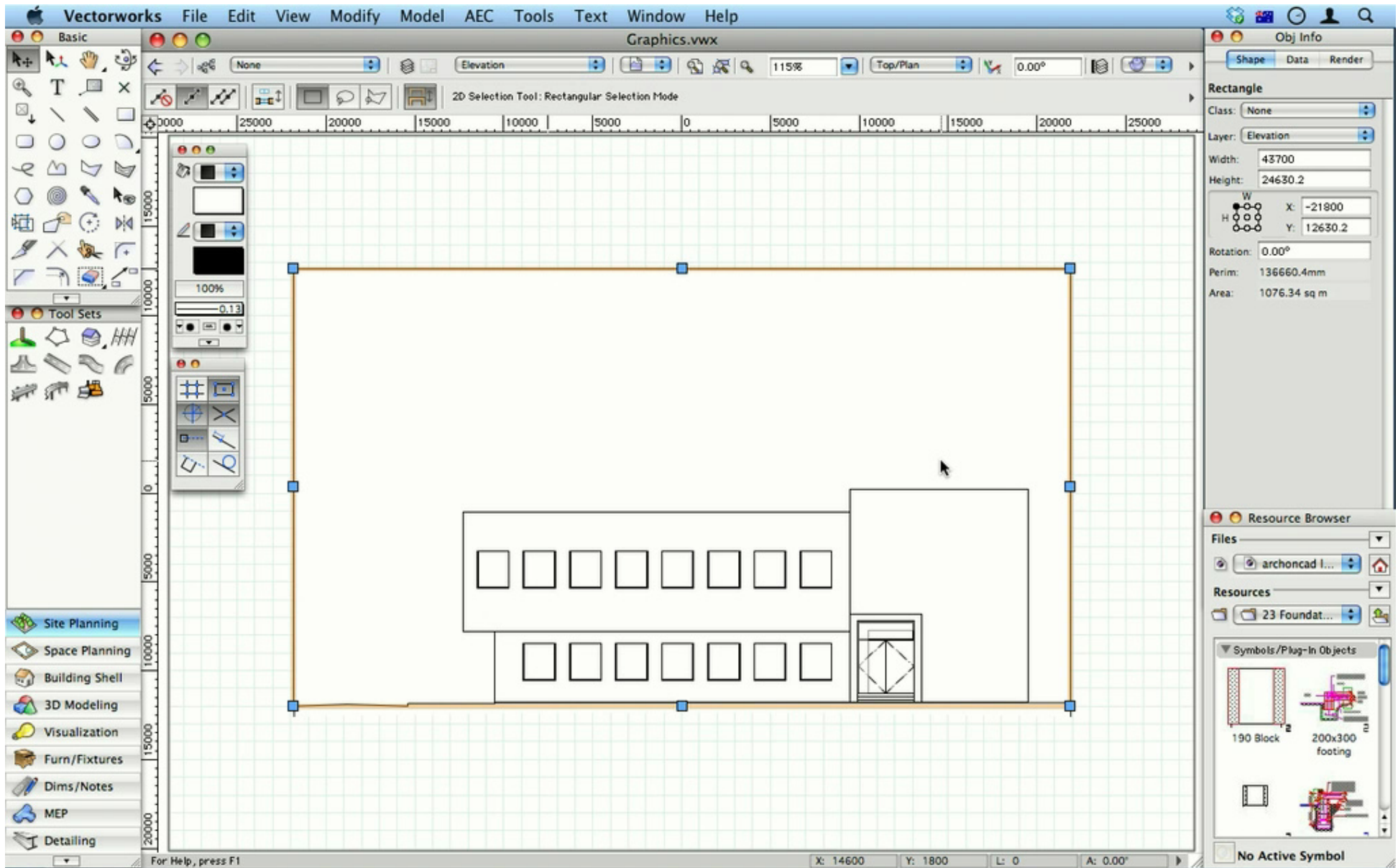


Graphics

Graphic Attributes

How to apply graphic attributes, such as line weight, hatching, image fills and graphic symbols to a drawing.

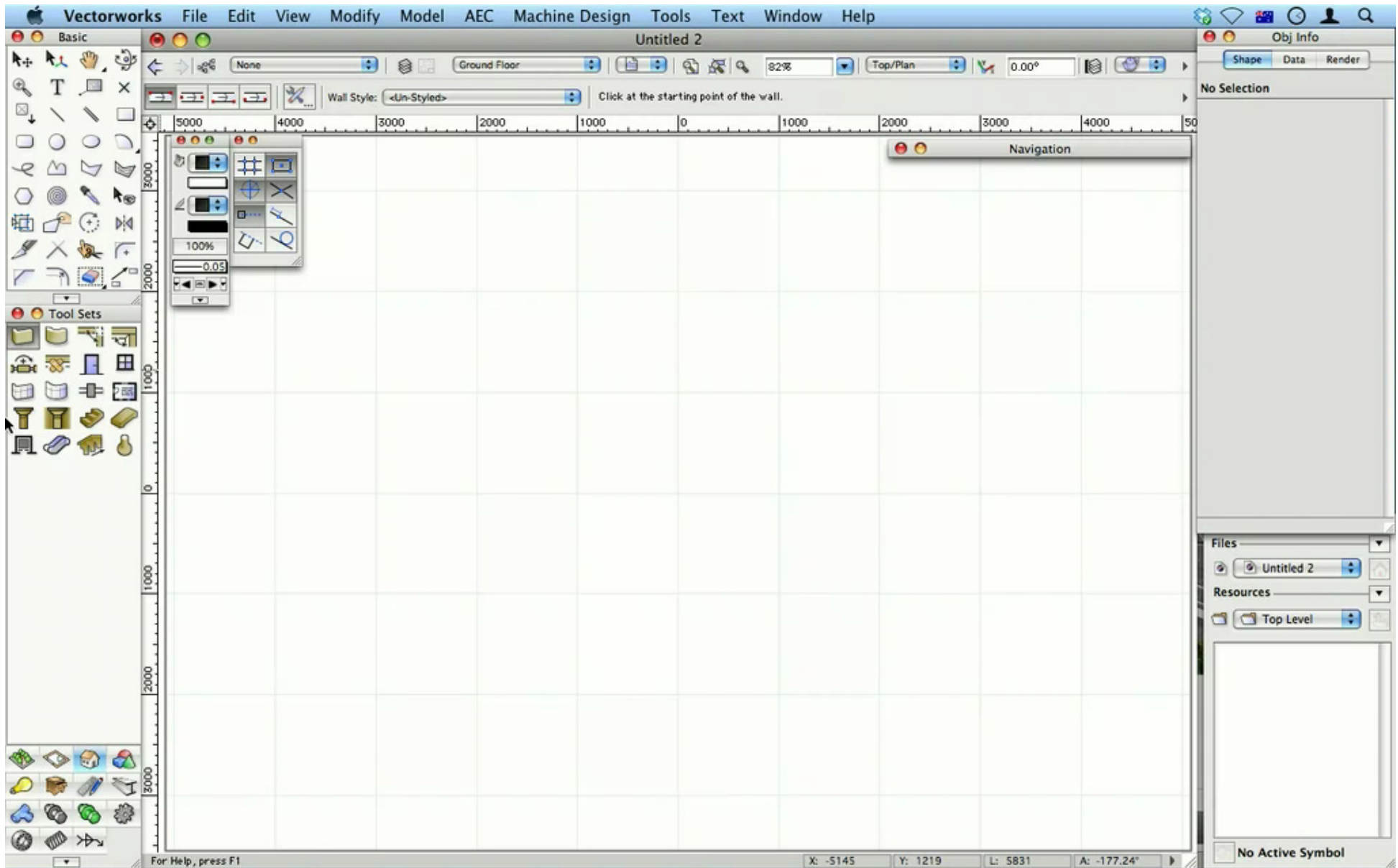
Click on the image below to play the movie.



Dealing With Walls

If you have *Vectorworks Architect* or *Designer*, the wall tool allows you to use wall styles, and to store Wall Styles in a Wall Style Library. We can start with drawing a simple wall.

Click on the image below to play the movie.

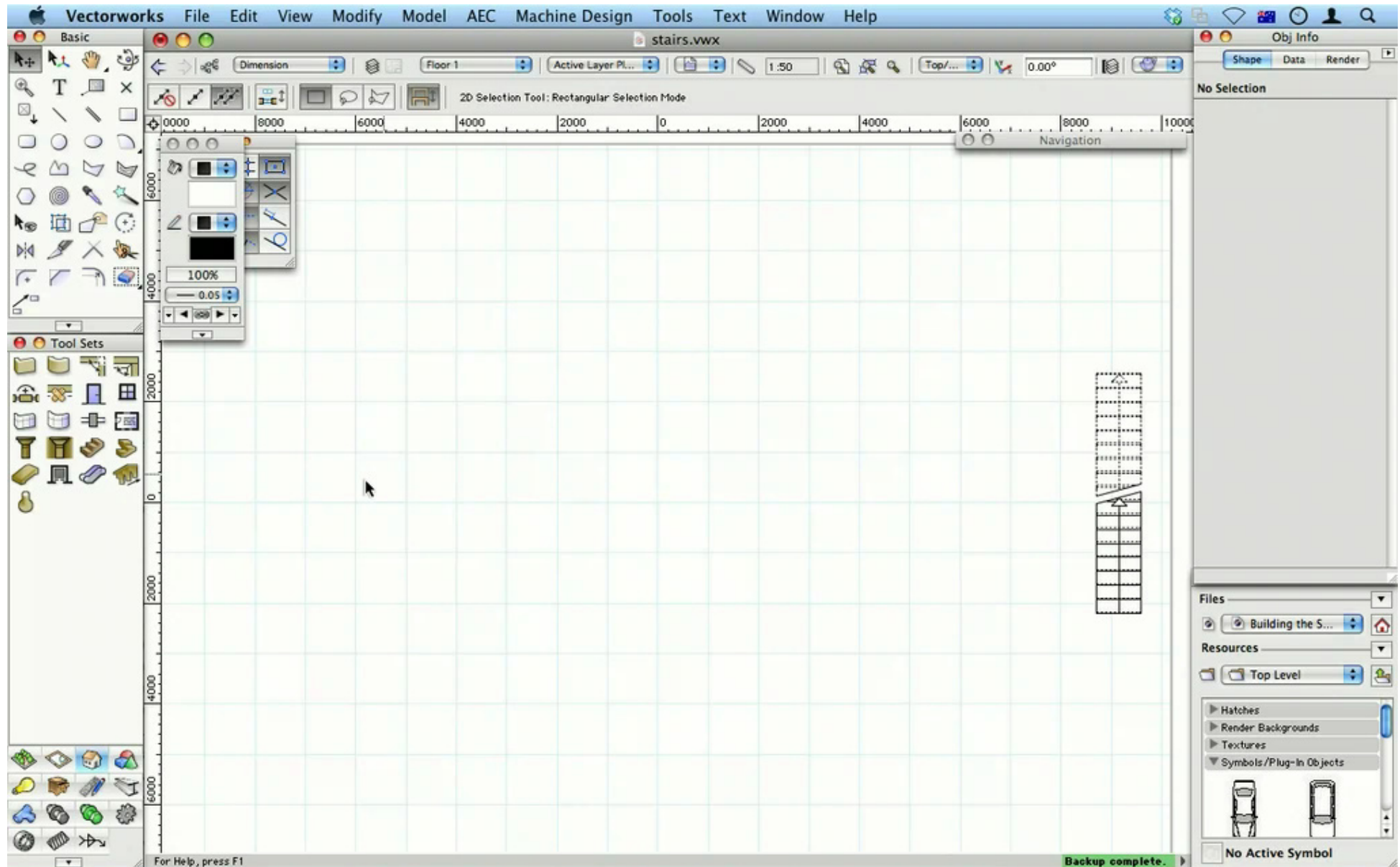


Vertical Transport

Stair Tool - Straight Stair

This is how to make a straight stair.

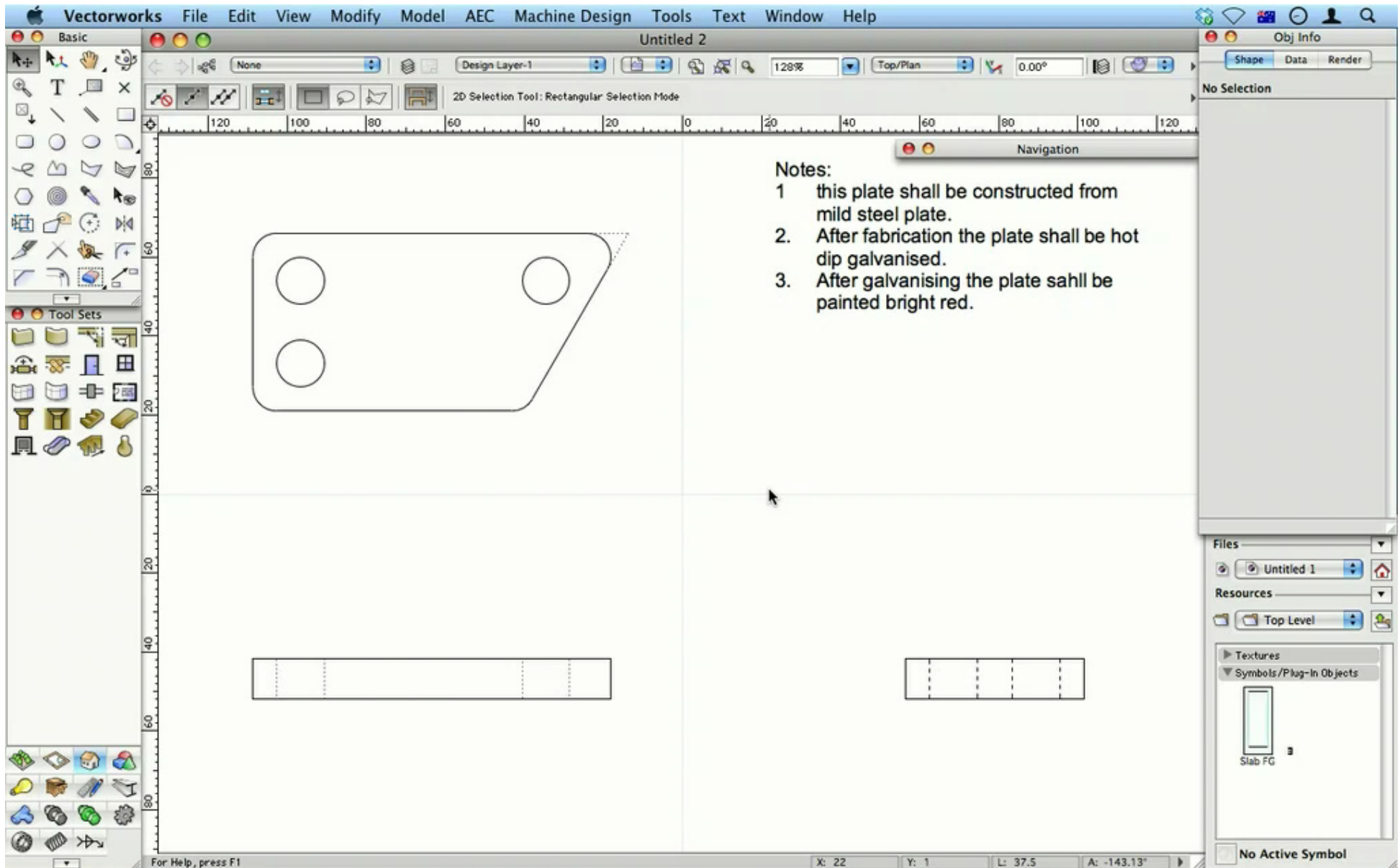
Click on the image below to play the movie.



Annotation

Creating Text

Click on the image below to play the movie.



Viewing

Zooming

You can zoom into a drawing use a few different ways.

Click on the image below to play the movie.

