

Vectorworks® Landmark

Realize Your Most Inspired Visions



Vectorworks Landmark

Vectorworks Landmark 2010:

- 1 Flexible**
Enjoy the Freedom to Design the Way You Want
- 2 Versatile**
Create, Model, and Present with One Application
- 3 Intuitive**
Work the Way You Think
- 4 Smart**
Make a Good Investment in Yourself

Making Change Easy

Change is good. And with Vectorworks Landmark 2010, you'll see changes that will make your work a cinch. Use our superior 2D drafting capabilities and easy-to-use 3D environment to accurately conceptualize, visualize, create, and communicate your design. Use the tailor-made landscaping tools to make your drawings spring to life. And, do it all without turning your firm upside down. We're making change easy, so your work is easy too.



1 Flexible: Enjoy the Freedom to Design the Way You Want

Work on any size project in 2D or 3D. Design whatever you can dream up. With Vectorworks Landmark, you're not limited by the software. The possibilities are wide open.

Range of Projects

Work on any type of project with a flexible design environment. Design residential plans at 1/4-inch scale up to urban plans at 1:1,000 or larger. Vectorworks Landmark's elegant design tools easily scale up or down to accommodate your work.

Graceful 2D Designing

Sketch out concepts, create illustrative master plans, and work up precision construction drawings. Vectorworks Landmark's sophisticated 2D drafting tools and unique 2D presentation capabilities make it easy.

Powerful 3D Modeling

Take your designs to the next level with intelligent objects that display correctly in 2D plan and 3D views, flexible freeform modeling tools, and 3D Digital Terrain Modeling (DTM) capabilities. Create stunning 3D renderings and even animated flyover and walk-through movies.

Limitless Designs

Bring your ideas to life. Vectorworks Landmark goes beyond planting plans. You can design anything—graphics, ornamentation, hardware, furniture, decking, urban master plans, or whatever you can imagine—without having to learn or use additional applications.

Efficient Workgroup Capabilities

Break up complex projects. Whether you're a sole practitioner subbing out work or a large firm dividing work among different members of the team, Vectorworks Landmark's workgroup referencing provides a flexible way to split up even the most complicated project into manageable pieces.

Vectorworks Landmark

Easy-to-share CAD Files

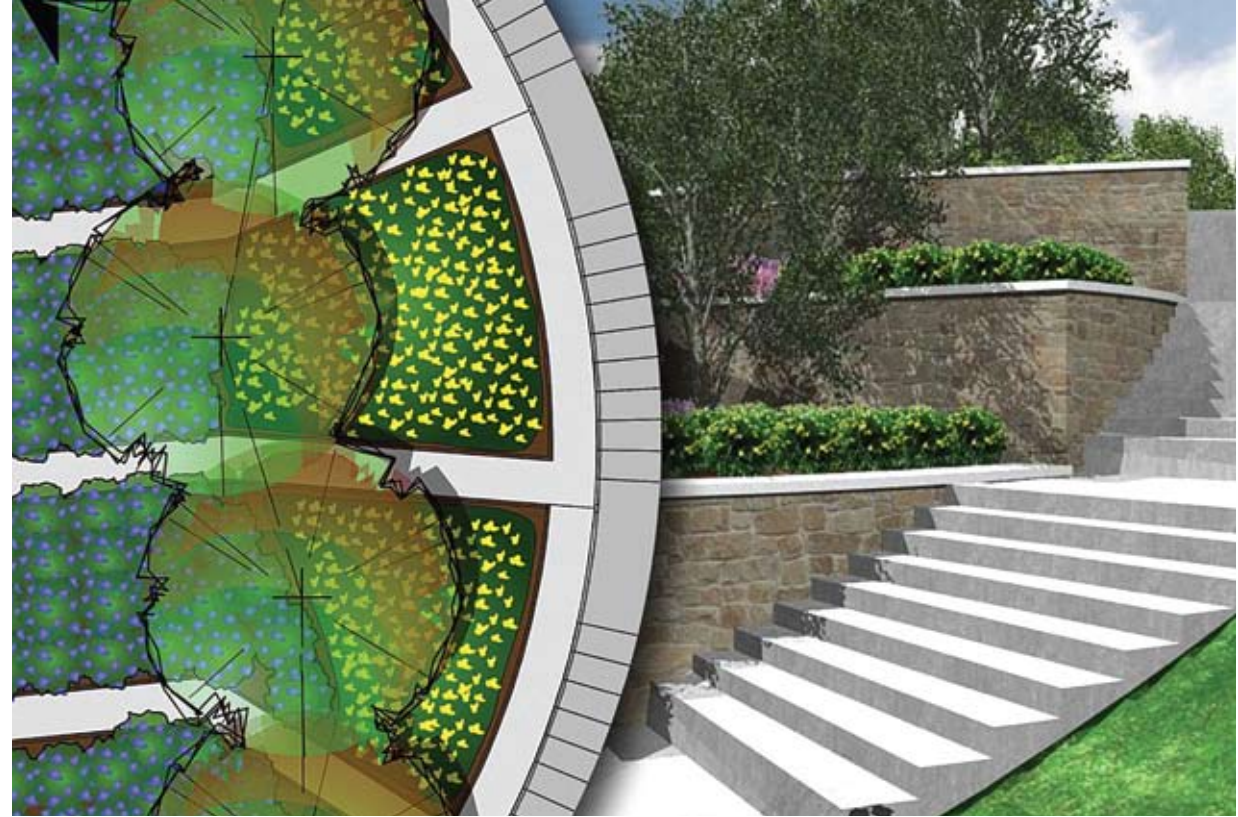
Easily exchange files with builders, architects, and engineers using AutoCAD®, MicroStation, or other CAD applications that support DWG.

Google Friendly

Import concept models from SketchUp® and access thousands of models from Google's 3D Warehouse. Export 3D models to Google Earth®.

Endless Digital Images

Make your work even more compelling and easier to communicate with digital imagery. Import scans, digital photos, or web images. Import or export a wide array of image files, including Illustrator EPSF® and native Photoshop® PSD files. Export your design for use in your company's marketing materials and website, as well.



“This is an amazing program and I do not think I will ever go back to drawing by hand, especially for larger projects.”

Judy Nauseef, APLD,
Judy Nauseef Landscape Design,
Iowa City, Iowa

Vectorworks Landmark

“I prefer Vectorworks Landmark over AutoCAD, because Vectorworks is much more intuitive. The tools are so much easier to find and use, yet all the capability is still there.”

David Kamp, ASLA, LF
Dirtworks, PC
New York, NY



Courtesy of Dirtworks, PC

2 Versatile: Create, Model, and Present with One Application

Move easily between tasks. From design concepts to documentation, and every design phase in between, Vectorworks Landmark marries precision 2D drafting and flexible 3D modeling with state-of-the-art technology. Create, model, and present easily and precisely with one application. With Vectorworks Landmark, you can do it all.

Vectorworks Landmark boasts a comprehensive set of design tools to support your entire practice. You'll have complete functionality for:

Streamlined Site Documenting

Start on the right foot. This is where it all begins and no one does it better. Cleanly import CAD drawings from architects, builders, or engineers to use as base plans. Download GIS files from the city or state. Scan in planting plans or survey files and trace over them with ease. Or, quickly enter your field measurements. Use the property line or site modeling tools to quickly define a site's boundaries and setbacks. There is even a suite of building and site objects to easily document existing structures and site conditions.

Easy Sketches and Presentations

Find your inspiration, and if you would like, import hand sketches, pictures of the site, or even documents from other applications. Quickly sketch out your design ideas and present them. Then re-work and refine them with intelligent site and building objects and planting tools—all while analyzing your design for areas, volumes, counts, and other data like light and shadow studies. This way, you can make smarter design decisions early in the process.

Detailed 2D Construction Drawings

Use our suite of precision 2D drawing tools and intelligent landscaping, irrigation, site design, and urban planning objects to make it easy to quickly lay out plans, elevations, sections, and detail drawings. The exclusive Place Plant tool puts plantings at exact intervals or in groupings. Our unique Freehand tool lets you draw organic shapes for beds and water features. Our convenient Hardscape tool creates patterned walkways and areas. A flexible Massing Model tool and suite of architectural objects creates model buildings. When you're ready, you can batch print drawing sets or export them as multi-page PDFs at full or reduced sizes.

Vectorworks Landmark

Thousands of Free Drag and Drop Resources

Take advantage of Landmark's large, free landscape libraries. There's no need to re-draw objects when you can use pre-drawn plants, plant images, and thousands of symbols and hatches from manufacturers like Unilock® for objects like furniture, lighting, irrigation, parking, roads, cars, and paving patterns.

Automatic Reports and Lists

Stop counting items in your drawings. Automatic data tracking does the tedious work for you. The application goes further than automated plant lists and materials takeoffs. It provides a user-defined way to assign custom data to any object and use that information to calculate area takeoffs, mulch volume, edging length, grade, and area costing.



Vectorworks Landmark

Superior in Presentations

Define and communicate your signature look with presentation capabilities that are famous for helping our users achieve beautiful, graphically rich presentations. Tap into our large libraries of entourage and unlimited color choices. Your style is not limited by “cookie-cutter” looks. Add gradients, image fills, stipples, and hatching. Easily import digital images and graphics.

Unique Hard/Soft Rendering Switch

Use our distinctive sketch rendering and exclusive plant styling technologies to blur the line between construction and presentation. You can switch between hard-lined drawings and soft, hand-sketched illustrations in the same drawing. Unique page layout capabilities make it a cinch to arrange presentation boards.

Accurate Mapping and GIS

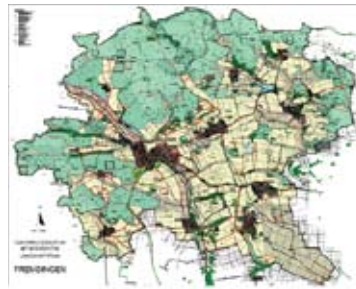
Integrate maps into your work with ease. Import geo-referenced aerial/satellite images and GIS data to be used as they are, or use the outstanding drawing, modeling, and graphics capability to embellish them with 2D or 3D graphics for compelling presentations.

Automatic Digital Terrain Modeling (DTM)

Automate grading plans, calculate cut/fill, analyze the site for slope and flow, and present the site in 3D. Vectorworks Landmark’s DTM capabilities make it all possible.

Bountiful Plant Images

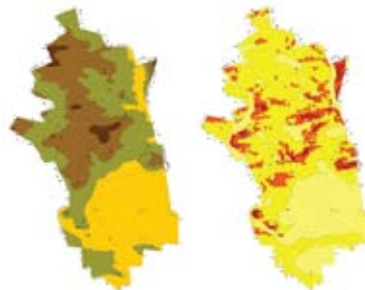
Flex your green thumb. We’ve partnered with Xfrog®, the industry’s premier developer of botanical modeling technology, to provide you with one of the largest plant image libraries available in any CAD application. You’ll find photorealistic plant images in several views, including top, elevation, and 3D, as well as seasonal and growth views. Plus, you can dig into a library of stylized plants for more impressionistic presentations.



Joost Godts, Joost Godts Consultancy Kirchheim am Ries

Renderworks

Plug in Renderworks™ to create photorealistic renderings or choose an artistic rendering option to make your scenes look hand drawn. Renderworks is seamlessly integrated—you won’t waste time importing and exporting the model as the design changes.



Joost Godts, Joost Godts Consultancy Kirchheim am Ries



Courtesy of Morris Architects



Joost Godts, Joost Godts Consultancy Kirchheim am Ries

Vectorworks Landmark



Courtesy of McHale Landscape Design, Inc.

3

Intuitive: Work the Way You Think

Vectorworks Landmark is intuitive. The application was created to mirror the way landscape architects and designers work, so you don't need to focus on the logistics of doing the work. You're free to focus on the work itself.

Easy-to-use Interface and Drafting Tools

Do what you like to do best—design. You won't waste time getting up to speed because Vectorworks Landmark's simple, customizable interface and what-you-see-is-what-you-get display make it easier to learn and use than standard CAD applications. No matter what you're switching from, Vectorworks Landmark's interface will be familiar. Vectorworks' SmartCursor™ technology replaces manual drafting tools, so even inexperienced CAD users can make the switch easily.

Tailored for Your Success

Work in tandem with the application. Vectorworks Landmark is ready to meet the needs of designers, landscape architects, and planners. In addition to designing with lines, arcs, and circles, you can design with tailor-made objects like plants, hardscapes, and walls. Landmark's intelligent objects are easy to edit. If you need to change a plant's spacing or the height of a retaining wall, just type in the changes instead of redrawing them. Plus, intelligent objects display correctly in both 2D and 3D views.



Courtesy of Simply Perfect Gardens

Vectorworks Landmark

4

Smart: Make a Good Investment in Yourself

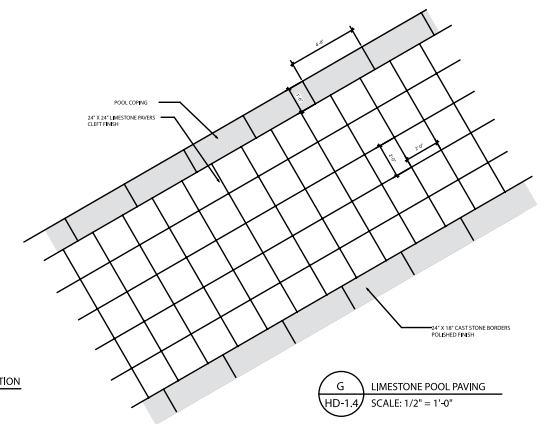
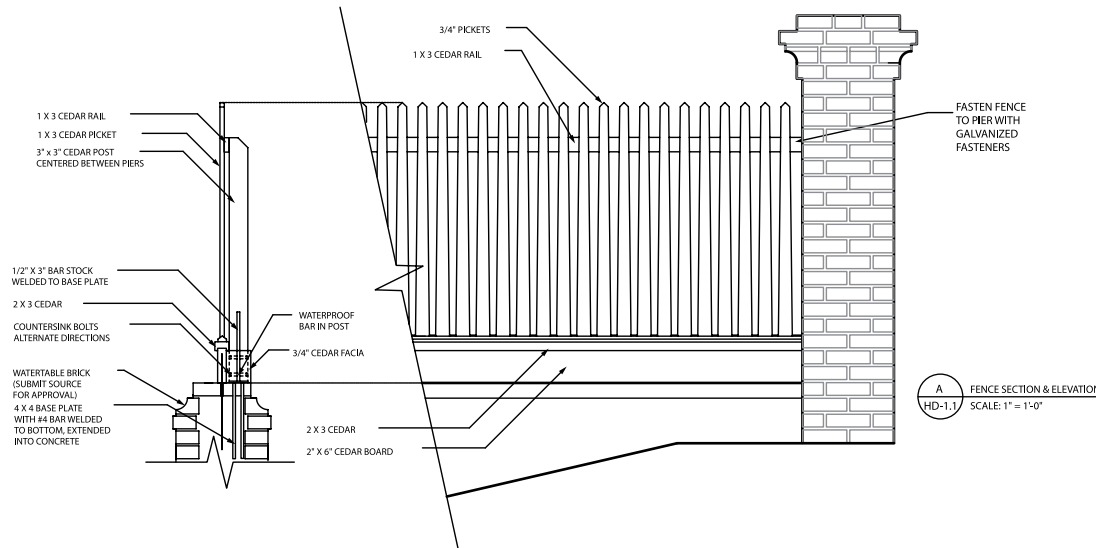
Affordable, customer focused, and proven worldwide—Vectorworks Landmark is a smart investment in you.

Affordable

Shop no further—you won't find another professional design application that includes so much for such a reasonable price. In one package, you get state-of-the-art tools and technology and the ability to work from conception to completion—a great value. You also get free software updates and affordable upgrades. With free technical support and reasonable training costs, you get value far beyond your initial savings. We never force subscriptions, so you're free to upgrade when and how you choose. As your business grows, we add extra seats at a discounted price. For you, that means a lot of great value—and no hidden fees.



Courtesy of Luciole Design, Inc.



Courtesy of Graham Landscape Architecture

Vectorworks Landmark

Customer Focused

Relax. We're here for you every step of the way. We listen and learn from your input—that's how Vectorworks Landmark is created. So your relationship with us doesn't end when you install the software. That's just the beginning. We provide many channels for you to get the information you need. If you'd like training, take advantage of our multiple offerings: onsite, online, or in the classroom. If a technical issue stumps you, contact our technical support team for help. You can also tap into our Vectorworks community with over 450,000 enthusiastic users worldwide and user groups on the local level. E-mail listservs provide assistance around the clock, or you can use a service directory and job board to find help.

Vectorworks users often find themselves in Internet-based dialogues with our engineers and managers. We take pride in cultivating lasting relationships with our users, and we translate their feedback into positive product developments. With your input, we can continue to develop software that exceeds your expectations. After all, your success is our success.



“We find Vectorworks Landmark to be a versatile CAD system that works extremely well for us. We find it easy to use and a big time saver. Yet it has a level of complexity and sophistication that enable us to create all the details we need, as well as assemble a vast amount of data from different sources.”

Jay Graham, principal
Graham Landscape Architecture
Annapolis, MD



Courtesy of Jeffrey Gordon Smith

Vectorworks Landmark

Proven Worldwide

Be part of a long tradition of excellence. Vectorworks was founded over 20 years ago, and now counts more than 450,000 design professionals worldwide. We listen to our customers and use their feedback to create a product that continually exceeds their expectations, delivering superior design flexibility and world-class graphics.

Vectorworks is the best-selling cross-platform professional CAD software and the preferred application for world-renowned landscape architects like Peter Walker Partners in Berkeley, DirtWorks PC in New York, Andrew Fisher Tomlin in London, and countless others who move the design world forward every day.

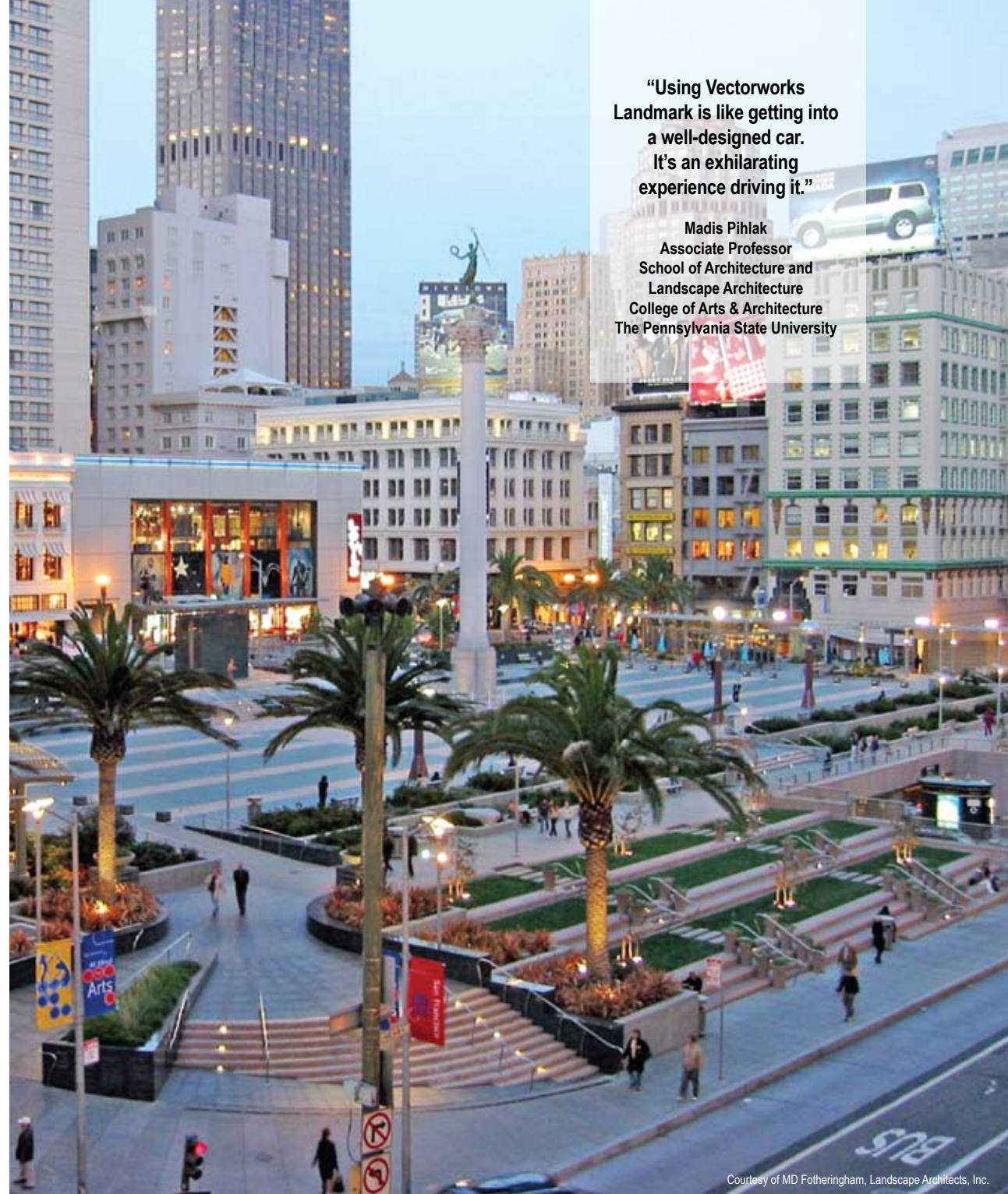
Vectorworks Landmark is produced by Nemetschek North America, a wholly owned subsidiary of Nemetschek AG, which is the world's leading IT company for the design, construction, and management of buildings and real estate. Nemetschek software solutions are used by design professionals in 142 countries and translated into eight languages.

With Vectorworks Landmark 2010, the tradition continues.

Vectorworks Landmark
Realize Your Most Inspired Visions.



Courtesy of Morris Architects



**“Using Vectorworks
Landmark is like getting into
a well-designed car.
It’s an exhilarating
experience driving it.”**

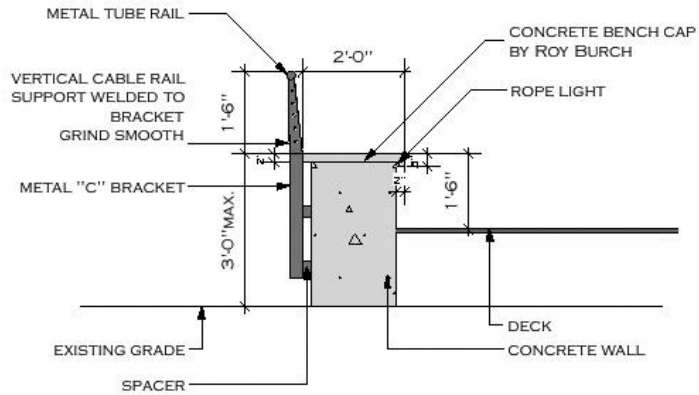
Madis Pihlak
Associate Professor
School of Architecture and
Landscape Architecture
College of Arts & Architecture
The Pennsylvania State University

Courtesy of MD Fotheringham, Landscape Architects, Inc.

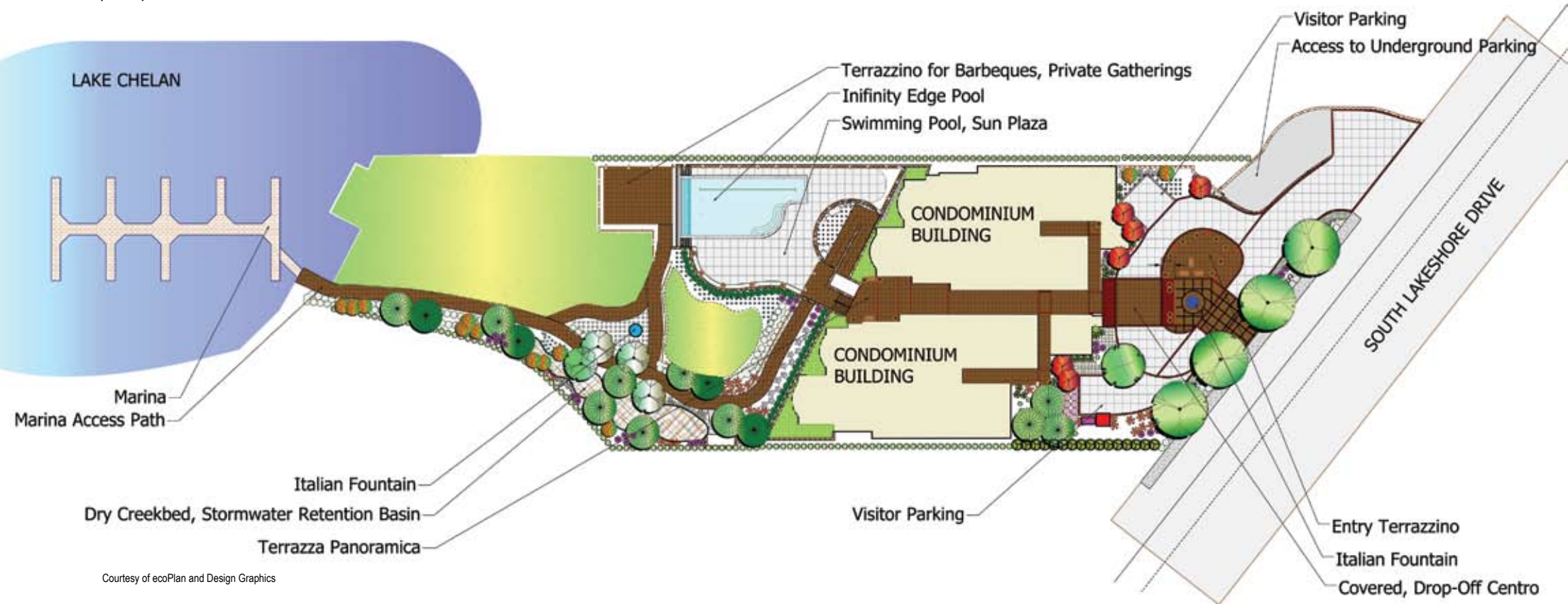
Vectorworks Landmark



Courtesy of Donna M. Winters & Associates



Courtesy of Jeffrey Gordon Smith



Courtesy of ecoPlan and Design Graphics

Nemetschek North America, Inc.
7150 Riverwood Drive, Columbia, MD 21046-1295 USA
www.vectorworks.net | T 410-290-5114 | F 410-290-8050

©2009 Nemetschek North America, Inc.
Vectorworks is a registered trademark of Nemetschek North America, Inc.
Renderworks is a trademark of Nemetschek North America, Inc.

Parasolid is a registered trademark of Siemens PLM Software.

System Recommendations

Mac OS X 10.5.7 or later
QuickTime
Intel Core 2GHz or better
DVD-ROM drive (dual layer)
Screen resolution 1024 x 768 (XGA)
Display color depth 15 bit or higher

Windows XP SP 3
Windows Vista SP 2
QuickTime 7.5 to 7.6 (higher versions not recommended)
DVD-ROM drive (dual layer)
Screen resolution 1024 x 768 (XGA)
Display color depth 15 bit or higher

Vectorworks
RAM 1GB minimum, 2GB recommended
Hard drive space 10GB free

Vectorworks plus Renderworks
RAM 2GB minimum, 4GB recommended
Hard drive space 10GB free

Vectorworks Designer
RAM 1GB minimum, 2GB recommended
Hard drive space 10GB free

Vectorworks Designer plus Renderworks
RAM 2GB minimum, 4GB recommended
Hard drive space 10GB free

See www.vectorworks.net/system-recommendations.php
for updated information.